



# MACLIT INDICATOR



A SWITCH

B PILOT LAMP &  
INDICATOR

C CONNECTING  
DEVICES

D ELECTRONIC  
DEVICES

E CONTROL  
CENTER PARTS

## FEATURES

- The Maclit indicator is operated by the electromagnetic polarity inversion method. The status is displayed by rotating the display part. The SS and MS types have built-in LED for night time use.
- SS and MS can display 3 states; “Load ON”, “Load OFF”, “Loss of power to the indicator”.
- Materials with high weather resistance are available for outdoor equipment (SQ and MS types).
- The Maclit Indicator can operate at low power consumption. It offers various advantages including energy saving, space saving, and maintenance free.
- The MS type is provided with the residual display function. When the display power source is lost, the color displayed immediately before that loss and the other colors appear at their respective ratios of 2/3 and 1/3 on the display part. This function allows you to identify the status at a glance in which the power source has been lost (Except for MSD and MSB-S).

## SPECIFICATIONS (RATINGS, PERFORMANCE)

Specification	Type	SS	SQ	MS
Rated insulation voltage (UI)		250V		
Rated current		20mA or less		25mA
Withstand voltage		2,500V AC / 1 min.		
Lightning impulse		±7kV / 3 times for each pole (1.2 / 50μs)		
Insulation resistance		100MΩ or more		
Shock resistance		50G or more		
Service life		300,000 times or more		100,000 times or more
Location of use		Indoor	Indoor / outdoor	
Operating temperature		-20 to 50°C		-20 to 60°C
Degree of protection		Closed type	Water-proof / dust-proof (IP65)	
Weight		150g		250g



# MACLIT INDICATOR

**HOW TO ORDER** Select from the following product coding.

## SS type

### SS-11B

		<b>Surface frame color</b>	
		<b>B</b>	N1.5
		<b>4/1.5</b>	7.5BG4/1.5
<b>Basic type</b>		<b>Supply voltage</b>	
		<b>11</b>	100 / 110V AC / DC
<b>SS</b>	Standard type	<b>12</b>	125V AC / DC
<b>SQ</b>	Waterproof type	<b>22</b>	200 / 220V AC / DC

\* Color combination is only red/green.

\* In case the panel is not magnetic metal material, please order "SS magnetic plate" as an accessory.

## MS type

### MSD-DC11B

		<b>Surface frame color</b>	
		<b>Code</b>	<b>Munsell color</b>
		<b>B</b>	N1.5
		<b>BG</b>	7.5BG4/1.5
<b>Basic type</b>		<b>Supply voltage</b>	
		<b>Code</b>	<b>Voltage</b>
<b>Circuit / Power type</b>		<b>11</b>	100 / 110V AC / DC
		<b>22</b>	200 / 220V AC / DC
<b>D</b>	<input type="radio"/> AC <input type="radio"/> DC	<b>DC11</b>	100 / 110V DC
<b>B-S</b>	<input type="radio"/> AC <input type="radio"/> DC	<b>DC22</b>	200 / 220V DC
<b>(none)</b>	<input type="radio"/> AC <input type="radio"/> DC	<b>AC11</b>	100 / 110V AC
		<b>AC22</b>	200 / 220V AC

\* MS-11B type for none (no code)  
Please select AC or DC for the order of MSD and MSB-S.

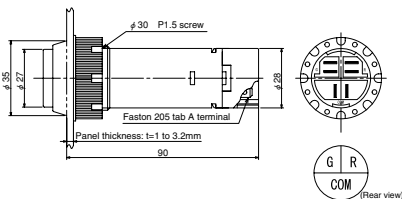
\* 200 / 220V AC / DC type is a set of 100 / 110V type and a separate resistor.



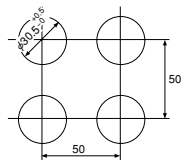
MACLIT INDICATOR

# SS TYPE

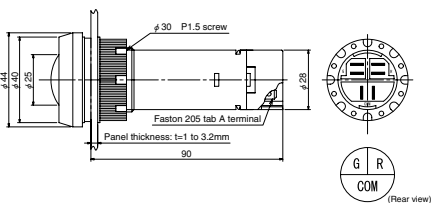
## SS TYPE Standard type



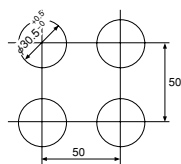
● Mounting hole size



## SQ TYPE Waterproof type

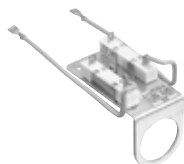


● Mounting hole size

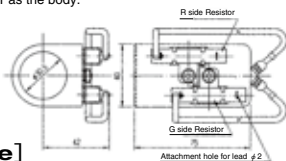


## ACCESSORIES [SS · SQ TYPE]

### Resistor [SS □]



**DC125** for 125V DC  
**SS22** for 220V DC  
 Use SS-11 as the body.



### Square type adapter

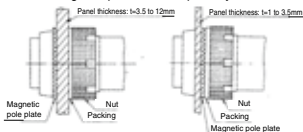
Only SS type can be mounted.



Name	Color
SS adapter 4/1.5	7.5BG4/1.5
SS adapter B	N1.5

### [SS magnetic plate]

It is necessary when the applicable panel is a non-magnetic body:  
 \* The magnetic panel is sold separately.



Note: When the panel thickness is 6 to 12 mm, the nut becomes different. Specify the nut additionally.

### [SR jigu B]

This is tighten tool for a panel mounting nut.



### [Condensation-free cover: SQ-CV-C]



A SWITCH

B PILOT LAMP & INDICATOR

C CONNECTING DEVICES

D ELECTRONIC DEVICES

E CONTROL CENTER PARTS

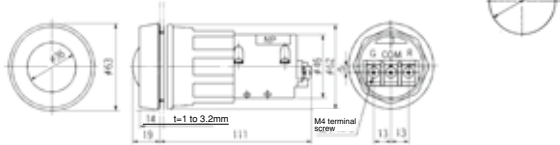


MACLIT INDICATOR

# MS TYPE

## MS TYPE (Common to all models)

● Mounting hole size



- The terminal protective cover (MS-CV) is provided as standard equipment.
- Engraving of terminals are G/R even if the spec is B/W.

## MODELS AND CIRCUIT TYPES

Type	Supply voltage	Surface color	Circuit type		Operating status	Lens color
			110V	220V		
MS-11	110V AC / DC  When used at 220V AC / DC, mount a separate resistor of 3.9kΩ, 10W.	Black 7.5BG 4/1.5			<ol style="list-style-type: none"> <li>When b is turned ON, G (green) is displayed.</li> <li>When a is turned ON, R (red) is displayed.</li> <li>When the power is turned OFF, the center color is displayed.</li> </ol>	R·G (Red · Green)
MSD-DC11	110V DC  When used at 220V DC, mount a separate resistor of 3.9kΩ, 10W.	Black 7.5BG 4/1.5			<ol style="list-style-type: none"> <li>When b is turned ON, G (green) is displayed.</li> <li>When a is turned ON, R (red) is displayed.</li> <li>When the power is OFF, the indicator is in the previous operating mode and does not return to the center color display mode.</li> </ol>	R·G (Red · Green)
MSD-AC11	110V AC  When used at 220V AC, mount a separate resistor of 2.4kΩ, 10W.	Black 7.5BG 4/1.5			<ol style="list-style-type: none"> <li>When b is turned ON, G (green) is displayed.</li> <li>When a is turned ON, R (red) is displayed.</li> <li>When the power is OFF, the indicator is in the previous operating mode and does not return to the center color display mode.</li> </ol>	R·G (Red · Green)

# PILOT LAMP & INDICATOR

## MODELS AND CIRCUIT TYPES

Type	Supply voltage	Surface color	Circuit type		Operating status	Lens color
			110V	220V		
MSB-SBW	110V AC	Black · 7.5BG 4/1.5			<ol style="list-style-type: none"> <li>When a is turned ON, <math>\text{W}</math> (white) is displayed.</li> <li>When the power and a are turned OFF, <math>\text{B}</math> (black) is displayed. This is simple 2-color display without a center color.</li> </ol>	B·W (Black·White)
MSB-SRG						
MSB-SBW	220V AC	Black · 7.5BG 4/1.5			<ol style="list-style-type: none"> <li>When a is turned ON, <math>\text{W}</math> (white) is displayed.</li> <li>When the power and a are turned OFF, <math>\text{B}</math> (black) is displayed. This is simple 2-color display without a center color.</li> </ol>	B·W (Black·White)
MSB-SRG			No separate resistor is required.			
MSB-SBW	110V DC	Black · 7.5BG 4/1.5			<ol style="list-style-type: none"> <li>When a is turned ON, <math>\text{W}</math> (white) is displayed.</li> <li>When the power and a are turned OFF, <math>\text{B}</math> (black) is displayed. This is simple 2-color display without a center color.</li> </ol>	B·W (Black·White)
MSB-SRG			When used at 220V DC, mount a separate resistor of 3.9kΩ, 10W.			

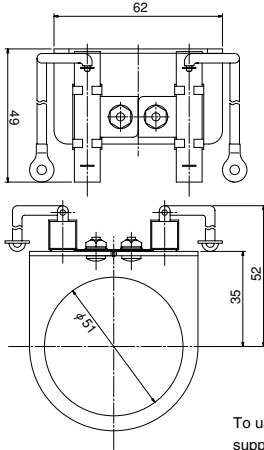


MACLIT INDICATOR

# MS TYPE

## ACCESSORIES

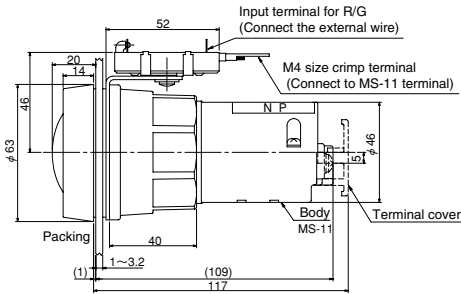
### Resistor [MS-22]



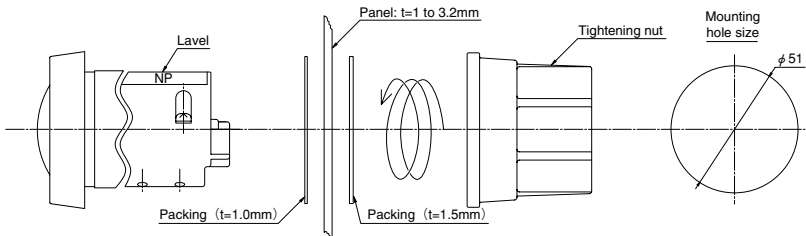
To use the 100 / 110 V AC / DC type indicator with a 200 / 220 V AC or 200 / 220 V DC power supply, a separate resistor is required.

\* If you order the 200 / 220 V AC / DC type indicator, a separate resistor comes with the product as a standard equipment.

## SEPERATE RESISTER INSTRATION [MS-11 + Resister MS-22]

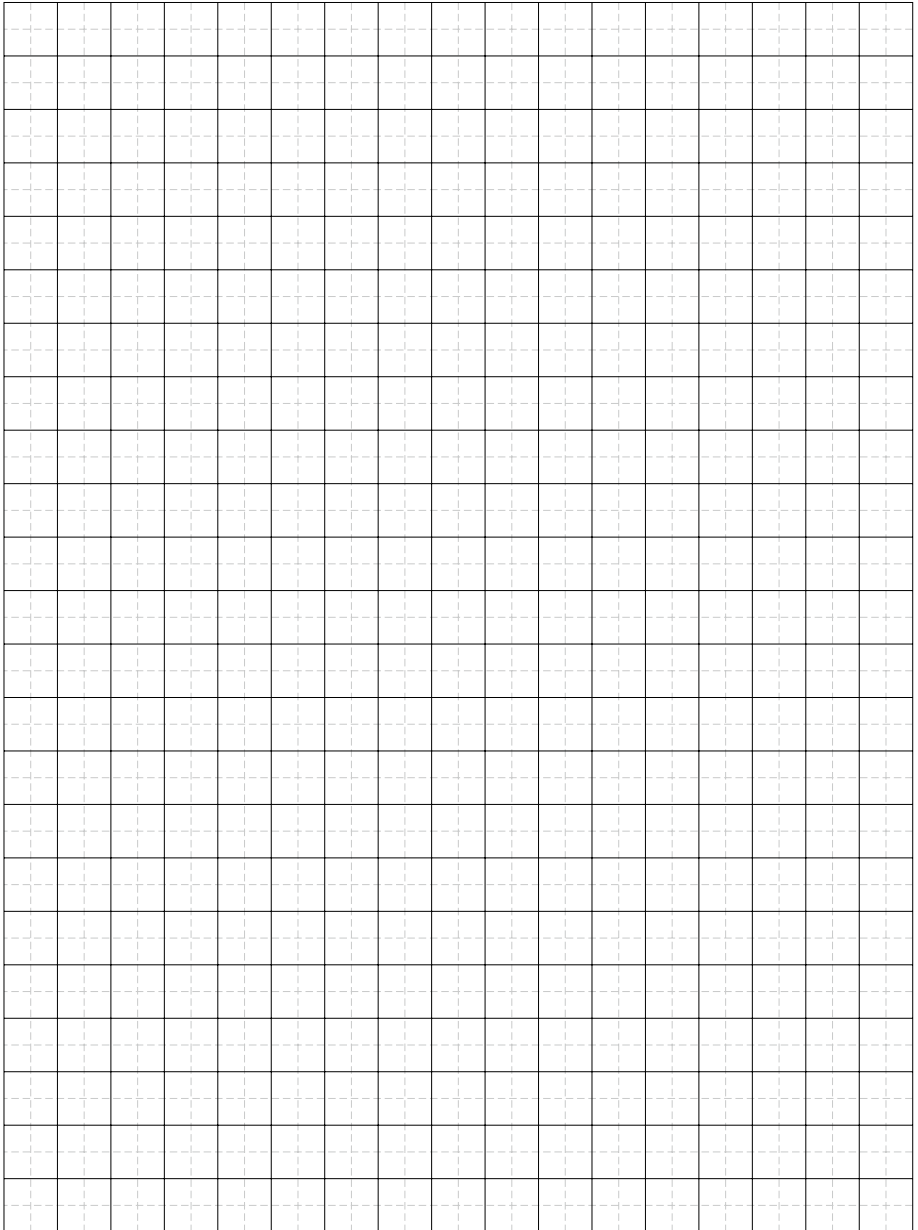


## HOW TO MOUNT [MS type]



# PILOT LAMP & INDICATOR

---



A SWITCH

**B  
PILOT LAMP &  
INDICATOR**

C CONNECTING  
DEVICES

D ELECTRONIC  
DEVICES

E CONTROL  
CENTER PARTS