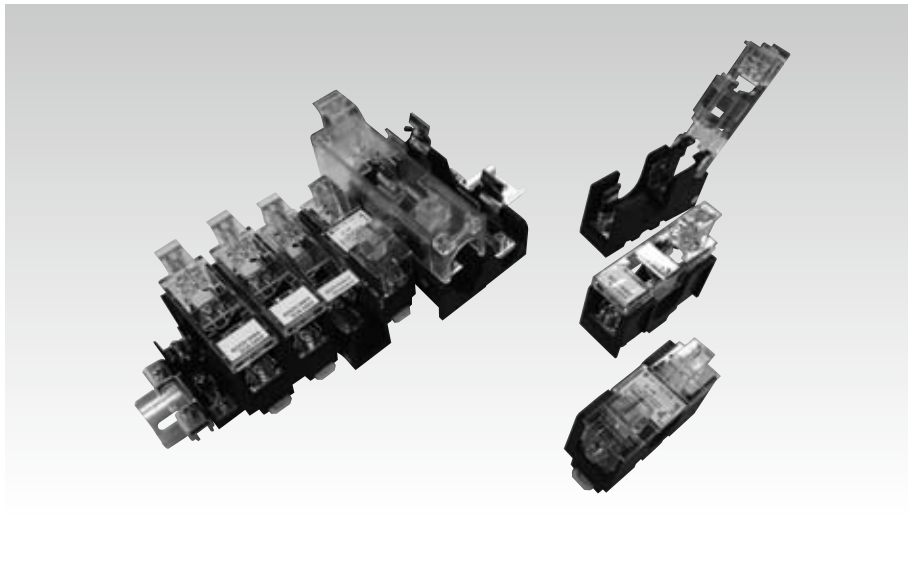




FUSE HOLDER



FEATURES

- **Conformed to JIS C 8314, C8352, and JEM1103.**

Both air clearance and creepage distance for insulation in JEM standard 1103 (1976) "insulation distance for controllers" are conformed to rated insulation voltage of 600 V AC / DC in the bear crimp condition (250 V AC or DC for F-10 type).

- **Superior heat resistance**

For the insulation base of 30 A or more, high-performance engineering plastic is used. It assures high heat resistance and keeps normal condition even if it is left in a furnace of 150°C for 5 hours. Sufficient safety is assured against a temperature increase due to overcurrent.

- **Light weight and high rigidity**

Sufficient strength is retained against rough handling to assure comfortable use. This fuse holder is highly resistant against shock and vibrations to hold the fuse in place.

SPECIFICATIONS (RATINGS, PERFORMANCE)

Type	F-10	PF-34 PF-34S	PF-35 PF-35S	DF-34	DF-35	NF-61 NF-61S	NF-62 NF-62S	SF-15 SF-15S
Rated insulation voltage (Ui)	250V							
Rated current-carrying capacity (Ith)	10A	30A				60A		10A
Max. wire size	5.5mm ²	14mm ²				22mm ²		14mm ²
Screw size	M4×8	M4×10	M5×12	M4×10	M5×12	M5×10		M5×12
Applicable fuse	10A (φ 6.4×30mm)	30A (φ 15×50mm)				30A (φ 20×57mm)	60A (φ 20×75mm)	*
Withstand voltage	2,500V AC / 1 min.							
Lightning impulse	±7kV / 3 times for each pole (1.2 / 50 μs)							±7.2kV / 3 times for each pole
Ambient operating temperature	-20 to 50°C	-40 to 70°C						-20 to 50°C
Temperature increase (at rated current)	35K				45K		55K	
Heat resistant performance	70°C 5H OK	150°C 5H OK						
Insulation resistance (500 MV DC)	1,000 MΩ or more							

* Plug type fuse "P6" according to JIS C8319.

How to order of fuse holders

**For the assembly of the rail, please refer to how to order below.
For a single fuse holder and accessories, please order by type code.**

HOW TO ORDER

PF-34 **A** **C** × **10** **UF**

① ② ③ ④ ⑤

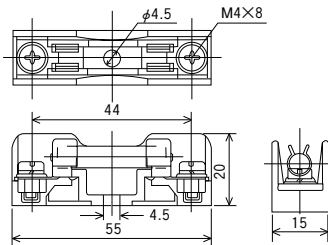
No.	Item	Code	Detail	Remark
①	Code	F-10	—	
		PF-34/PF-34S	—	
		PF-35/PF-35S	—	
		DF-34	—	
		DF-35	—	
		NF-61/NF-61S	—	
		NF-62/NF-62S	—	
	SF-15/SF-15S	—		
②	Adapter	A	With DIN rail with one touch mounting	Only PF-34/PF-34S, PF-35/PF-35S, SF-15/SF-15S *
		(blank)	With no adapter	
③	Carrier	C	With carrier	
		(blank)	With no carrier	
④	No. of poles	1~	1~	In case of with adapter, rail assembly is not available
⑤	Rail	UD	TUB-D type rail	Punched rail
		UF	TUB-F type rail	U-cut rail
		XD	TXB-D type rail	Punched rail
		XF	TXB-F type rail	U-cut rail

* PF-34A, PF-35A, SF-15A can buy only separately.

STANDARD PRODUCTS

F type

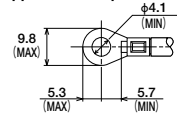
F-10



●Applicable accessories

Standard rail	TUB
End clamp	F-B end clamp
Rail mounting tab	For F-BTU tab
Cover	F-10 carrier

●Applicable crimp terminal



* With insulating cover



FUSE HOLDER

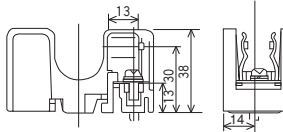
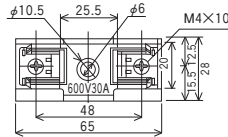
STANDARD PRODUCTS

PF type: (PF can be mounted on TUB rail without a rail mounting tab.)

PF-34 · PF-34S



Remark: When a stopper is attached to PF-34, the model name shall be PF-34S. "S" means stopper.

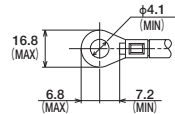


PF-34

● Applicable accessories

Standard rail	TUB
End clamp	F-B end clamp
Cover	PF-30 carrier

● Applicable crimp terminal

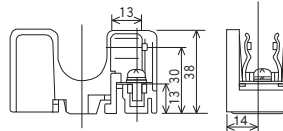
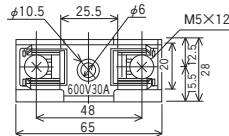


* With insulating cover

PF-35 · PF-35S



Remark: When a stopper is attached to PF-35, the model name shall be PF-35S. "S" means stopper.

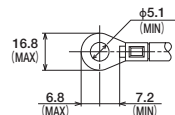


PF-35

● Applicable accessories

Standard rail	TUB
End clamp	F-B end clamp
Cover	PF-30 carrier

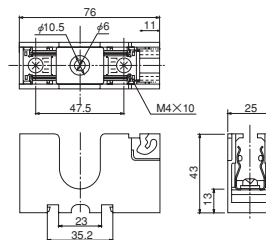
● Applicable crimp terminal



* With insulating cover

DF type: (DF can be mounted on DIN rail (TXB) without a rail mounting tab.)

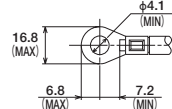
DF-34



● Applicable accessories

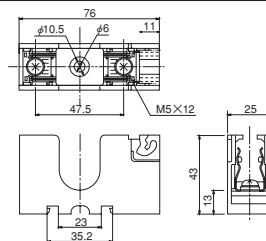
Standard rail	TXB
End clamp	AFL
Cover	DF-30 carrier

● Applicable crimp terminal



* With insulating cover

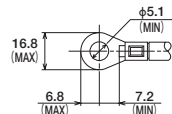
DF-35



● Applicable accessories

Standard rail	TXB
End clamp	AFL
Cover	DF-30 carrier

● Applicable crimp terminal

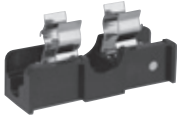


* With insulating cover

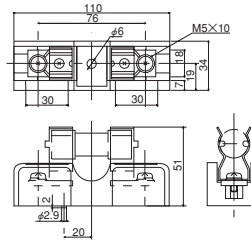
CONNECTING DEVICES

NF type

NF-61 · NF-61S



Remark: When a stopper is attached to NF-61, the model name shall be NF-61S. "S" means stopper.

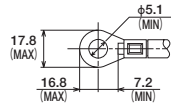


* NF-61

●Applicable accessories

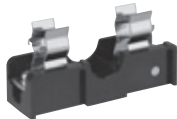
Standard rail	TXB
End clamp	AFL
Rail mounting tab	For F-BTX tab
Cover	NF-61 carrier

●Applicable crimp terminal

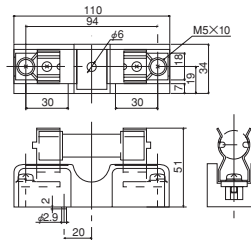


* With insulating cover

NF-62 · NF-62S



Remark: When a stopper is attached to NF-62, the model name shall be NF-62S. "S" means stopper.

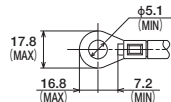


* NF-62

●Applicable accessories

Standard rail	TXB
End clamp	AFL
Rail mounting tab	For F-BTX tab
Cover	NF-62 carrier

●Applicable crimp terminal



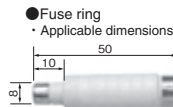
* With insulating cover

SF type

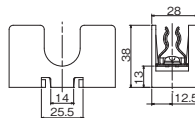
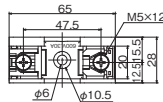
SF-15 · SF-15S



Remark: When a stopper is attached to NF-15, the model name shall be NF-15S. "S" means stopper.



- Fuse ring
- Applicable dimensions

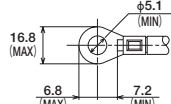


* SF-15

●Applicable accessories

Standard rail	TUB
End clamp	F-B end clamp
Cover	SF-15 carrier

●Applicable crimp terminal



* With insulating cover

* Please be careful in the mounting direction when inserting the fuse. Please insert the melt indication side securely on the convex side of the carry.



FUSE HOLDER

ACCESSORIES

Carrier

A nameplate seal is provided.
Attach it when using the carrier.

(Order unit: 100)

●F-10 carrier

●PF-30 carrier

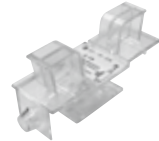
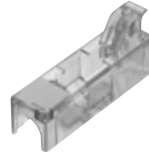
●DF-30 carrier

●NF-61 carrier

●SF-15-CA

●NF-62 carrier

This carrier can be mounted on the holder and used with lever operation.



End clamp

(Order unit: 100)

●F-B end clamp (for TUB)

●AFL (for TXB)

●TCL end clamp (for TXB)



Rail mounting tab

(Order unit: 100)

●F-B tab (for TUB)



Applicable types

F-10,NF-61,NF-61S
NF-62,NF-62S

●F-B DIN tab (for TXB)



Applicable types

F-10
PF-34, PF-34S
PF-35, PF-35S
NF-61
NF-62
SF-15, SF-15S

Nameplate label

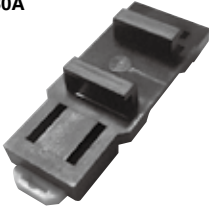
(Order unit: 100)

This is a label for attach on the upper side of the carrier.

Nameplate	Applicable types
250V MAX 10A MAX	F-10
600V MAX 30A MAX	PF-34, 34S PF-35, 35S
600V MAX 30A MAX	DF-34 DF-35
600V MAX	NF-61 NF-62

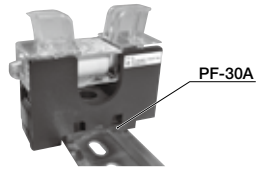
Rail mounting adapter with one touch

●PF-30A



Applicable holder

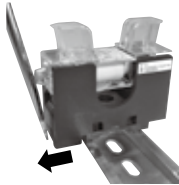
SF-15 / SF-15S
PF-34 / PF-34S
PF-35 / PF-35S



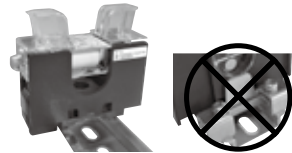
Rail attaching and detaching method



Attaching on the rail
Easy attaching by pushing into the rail.



Detaching from the rail
Just plug the screwdriver into the white claw and pull it in the direction of the arrow to detach it.



Rail mounting is tab not required
It can be fixed with only an adapter. It's structured to prevent left and right misalignment.

MOUNTING HOLE DIMENSIONS

F-10	PF-34, PF-35	PF-34S, PF-35S	DF-34, DF-35
NF-61, NF-62	NF-61S, NF-62S	SF-15, SF-15S	