

TEST TERMINAL



FEATURES

■ Simplified calibration and testing procedures

Our test terminals allow you to perform calibration and testing procedures with instrument and relays connected in place, resulting in great labor saving.

■ Broad range of applications

Our test terminals are available in a broad range of types including the stud type and insertion type to meet your current capacity requirements ranging from 5 to 30A and your applications.

■ Safety structure

Our test terminals for CT circuits are designed to prevent the circuit open. Both of the insertion type test terminals

for PT and CT circuits assure safety with their structure that prevents wrong insertion.

■ High insulation and anti-inflammability

For the housing material, high-performance engineering plastics is used to provide high insulation, anti-inflammability, and impact resistance.

■ Special spec for tropical region

To ensure high durability in harsh use under tropical regions, special protective treatment is applied to some products, which are available in the same ratings, performance, and dimensions as those of the standard products.

SPECIFICATIONS (RATINGS, PERFORMANCE)

Specification	Type	B-TYPE	K-TYPE	A-TYPE
Rated insulation voltage (UI)		250V	500V	250V
Rated current-carrying capacity (Ith)		10A *	10A	5A
Max. wire size		8mm ²	5.5mm ²	2mm ²
Withstand voltage		2,500 V AC / 1 min.		2,000 V AC / 1 min.
Lightning impulse		±7kV 1.2 / 50 μs		±3kV 1.2 / 50 μs
Ambient operating temperature		-5 to 40°C		-25 to 65°C
Insulation resistance		Insulation-resistance meter (1,000V DC) 1,000 MΩ		Insulation-resistance meter (500V DC) 1,000 MΩ
Overload capacity		200 A AC / 1 sec.		

* Operating current-carrying capacity as general terminal use: 30 A (The rating varies depending on the conventional standard)

HOW TO ORDER

[B-type test terminal]

B-PTT B MR

Basic type

Code	Structure / Usage
PTT	Single-actuator Structure
CTT	Dual-actuator Structure
C	Cover (Clear)
SV	Jumper
SB	
LB	

Code	Munsell color
4/1.5	7.5BG4/1.5
3/3.5	7.5BG3/3.5
R	7.5R4.5/14
Y	2.5Y8/12
B	N1.5

Code	Specification
(blank)	Standard
MR	Moisture resistance

[K-type test terminal]

K TT-A W 3-B M MR

Basic type

Test terminal

Code	Specification
A	For current
V	For voltage

Code	Contactor structure
S	Single contactor (Only for voltage type)
W	Dual contactor

Code	Front cover
(blank)	Removal type
M	Slide type

Code	Specification
(blank)	Standard
MR	Moisture resistance

Code	Munsell color
4/1.5	7.5BG4/1.5
B	N1.5

Code	No. of poles	Code	No. of poles
1	1 pole (*)	4	4 poles
2	2 poles	6	6 poles
3	3 poles	8	8 poles (*)

(*): Only for current type

* There is no line up of 1 pole type with the front cover slide structure.

[K-type test plug]

K TP-A 3 MR

Basic type

Code	Specification
(blank)	Standard
MR	Moisture resistance

Code	Structure at the contactor's top
TP	Short contactor
TQ	Long contactor

Code	Specification
A	For current
V	For voltage

Code	No. of poles	Code	No. of poles
1	1 pole (*)	4	4 poles
2	2 poles	6	6 poles
3	3 poles	8	8 poles (*)

(*): Only for current type

[A-type test terminal or plug]

A TT-A 3

Basic type

Code	Specification
TT	Test terminal
TP	Test plug
TQ	Test plug (screw-type)

Code	Specification
A	For current (Circuit opening prevention)
V	For voltage (Power source contact prevention)
VL	For voltage (Circuit opening prevention)

Code	No. of poles	Code	No. of poles
2	2 poles	6	6 poles
3	3 poles	8	8 poles
4	4 poles		

●STUD TYPE

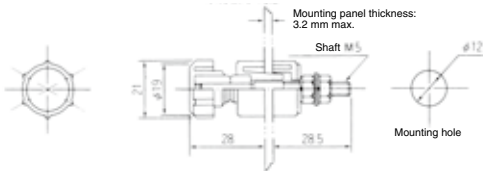
TEST TERMINALS



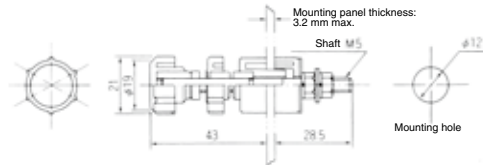
B-TYPE

STANDARD PRODUCTS

B-PTT



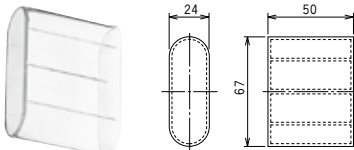
B-CTT



ACCESSORIES

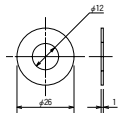
Protective cover (Front)

●B-C



* B-C is applicable when test terminals are mounted at pitches of 40 mm.
If the B-LB short bar is mounted, B-C cannot be used.

Color rings

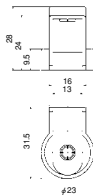


Color	Model
Blue	B color ring BL
White	B color ring W
Red	B color ring R
Yellow	B color ring Y
Black	B color ring B
Green	B color ring G

(Ordering unit: 100 pieces)

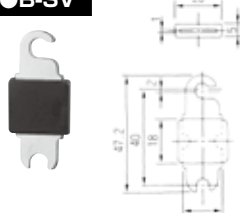
Protective cover (back)

●B-CVB



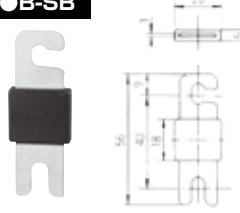
Jumper

●B-SV



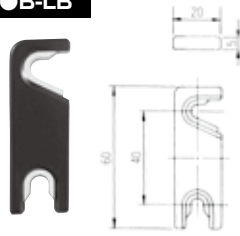
Model	Code	Munsell color
B-SV	4/1.5	7.5BG4/1.5
	3/3.5	7.5BG3/3.5
	R	7.5R4.5/14
	Y	2.5Y8/12
	B	N1.5

●B-SB



Model	Code	Munsell color
B-SB	4/1.5	7.5BG4/1.5
	3/3.5	7.5BG3/3.5
	R	7.5R4.5/14
	Y	2.5Y8/12
	B	N1.5

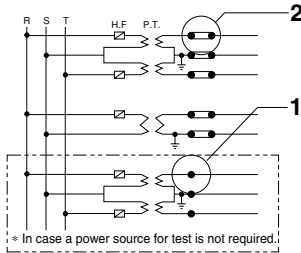
●B-LB



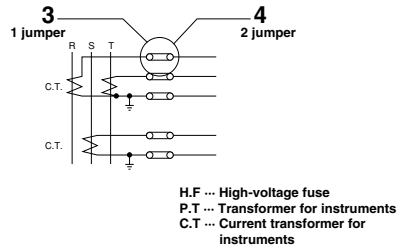
Model	Code	Munsell color
B-LB	4/1.5	7.5BG4/1.5
	3/3.5	7.5BG3/3.5
	R	7.5R4.5/14
	Y	2.5Y8/12
	B	N1.5

EXAMPLES OF CONNECTION

PTT



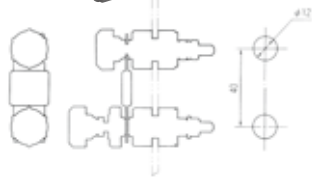
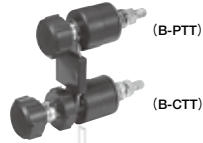
CTT



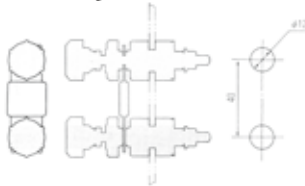
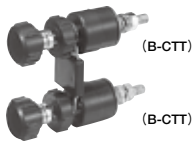
1



2



3



4

