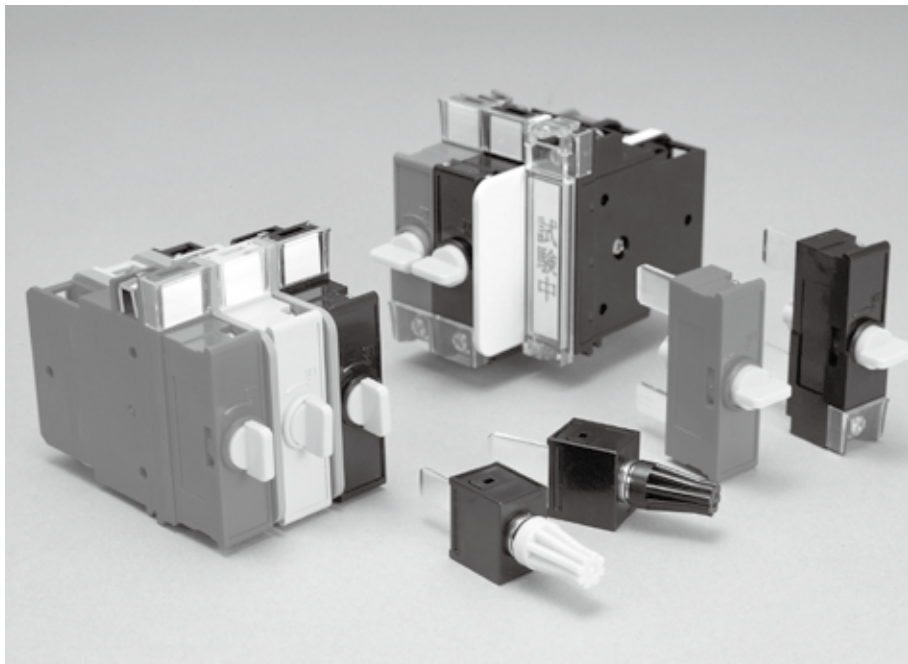




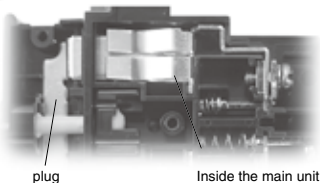
V-TYPE



FEATURES

1

The test plug and lock plug connecting parts provide a **twin-contact** structure that enables secure connections.



plug

Inside the main unit

2

With the **up-screw type terminals**, the V type can prevent terminal screws from dropping, resulting in a reduced number of wiring steps. The finger protection structure protects the live parts, ensuring improved safety.

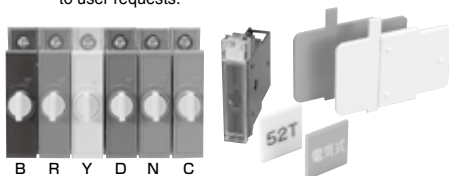


The coil spring (SUS) structure ensures smooth operation.

A finger protection is provided for live parts.

3

The V type terminals provide **color variations** depending on the application. A variety of protective caps and application labels are also available. These parts can be combined according to user requests.



B

R

Y

D

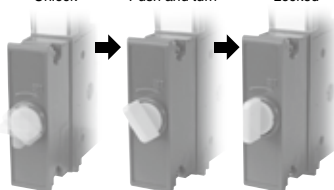
N

C

4

The **one-touch lock mechanism** securely locks each terminal. You can lock and unlock a terminal by pushing and turning the knob (two actions), to prevent erroneous operation.

Unlock Push and turn Locked



SPECIFICATION (RATINGS AND PERFORMANCE)

Type	VTT · VTL	
Specification		
Rated insulation voltage (Ui)	250V	
Rated current-carrying capacity (Ith)	20A	
Max. wire size	5.5mm ²	
Screw size	M4×9 (Up-screw type)	
Withstand voltage	Between live parts and mounting panel Between live parts	2,000 V AC / 1 min.
Lighting impulse	Between live parts and mounting panel Between live parts	±7kV / 3 times for each pole (1.2 / 50 μs)
Insulation resistance	Between live parts and mounting panel Between live parts	1,000 MΩ or more (by insulation resistance meter, 1,000 V DC)
Overload resistance	800 A for 2 sec. (Twice at one-min. intervals)	
Contact resistance (Initial value)	10 mΩ max.	
Insertion / removal durability	3,000 operations or more	
Ambient operating temperature	-20 to 50°C	
Storing temperature	-40 to 85°C	
Altitude	2,000 m or less	

HOW TO ORDER

Ordering a single product

[Voltage test terminal] with voltage check terminal

VTT-1A-B

Basic type	No. of poles 1~7 poles	Color	Code	Munsell color
Test terminal			B	N1.5
			N	7.5BG4/1.5
		Code	Separator	
		A	None	
		B	Provided (right side)	

[Trip lock terminal]

VTL-1A-B

Basic type	No. of poles 1~7 poles	Color	Code	Munsell color	Color
Trip lock			B	N1.5	Black
			R	7.5R4.5/14	Red
			Y	5Y8/12	Yellow
			D	7.5BG3/3.5	Blue green
			N	7.5BG4/1.5	Gray
			C	2.5YR5/8	Brown
		Code	Separator		
		A	None		
		B	Provided (right side)		

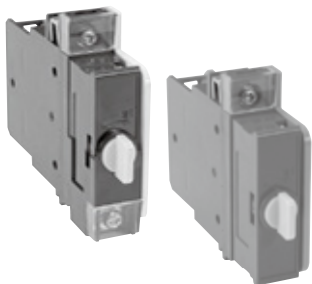


V-TYPE

HOW TO ORDER

Ordering products of combination

1 Combination of a terminal and a separator



[Voltage test terminal]

Type code **VTT-1 B-B**

with separator Color

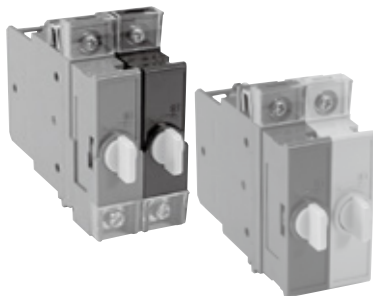
[Trip lock terminal]

Type code **VTL-1 B-R**

with separator Color

No. of poles

2 Combination of two terminals



[Voltage test terminal]

Type code **VTT-2 A-NB**

no separator Color

No. of poles (Front view, from the left side)

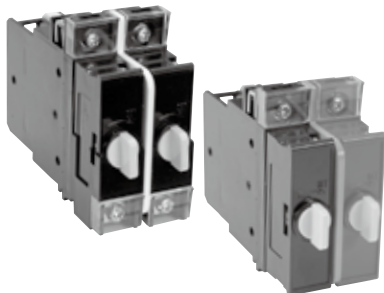
[Trip lock terminal]

Type code **VTL-2 A-RY**

no separator Color

No. of poles (Front view, from the left side)

3 Combination of two terminals and one separator



[Voltage test terminal]

Type code **VTT-1B1A-BB**

Combination type Color

(Front view, from the left side)

[Trip lock terminal]

Type code **VTL-1B1A-BR**

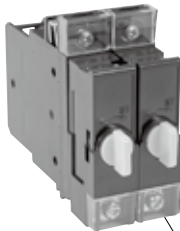
Combination type Color

(Front view, from the left side)

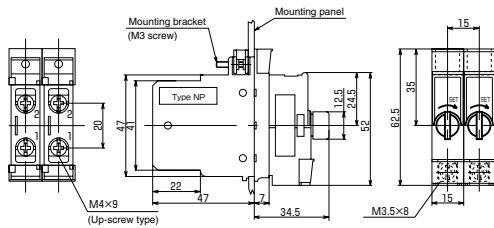
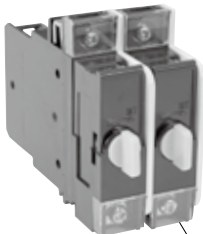


V-TYPE

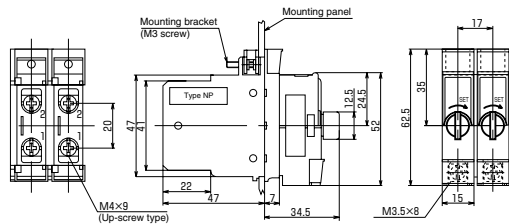
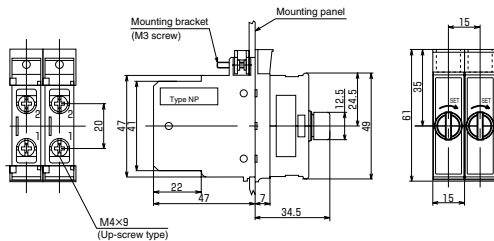
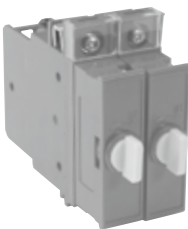
STANDARD PRODUCTS

VTT- No. of poles **A** Color


Voltage check terminal


VTT- No. of poles **B** Color


Voltage check terminal


VTL- No. of poles **A** Color

VTL- No. of poles **B** Color
