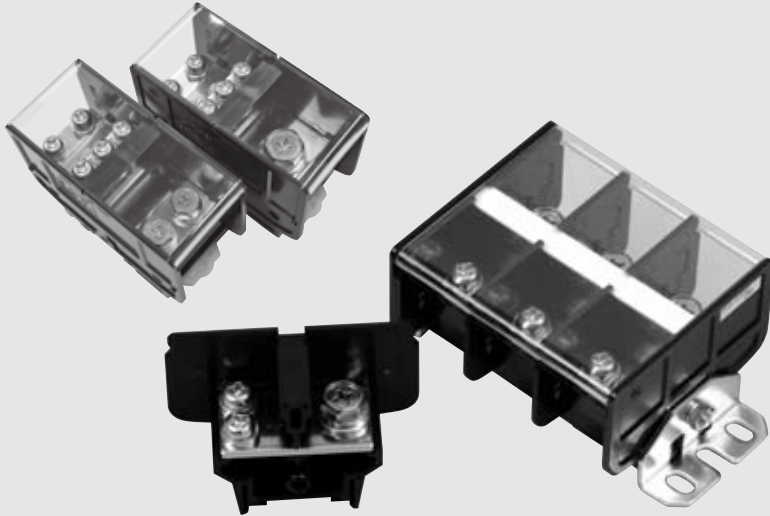




TX-□DF TYPE

Eliminating labor of branching results in greater efficiency of wiring work.
Contribution to power supply branching space saving



FEATURES

- The TX-□DF type enables branching of up to 4 lines with a single unit. TX-150MDF enables branching of up to 5 lines with a single unit.
- Providing the same basic performance as that of the TX type terminal block, this terminal block is applicable to either rail mounting or shaft mounting (TXS-□DF), according to the purpose of use. (The shaft mounting model can be mounted by fastening the unit at 2 points or 4 points). (Only TX-□DF is applicable.)
- According to intended use environment, stainless steel screw model is also available in the product lineup. (Only TX-□DF is applicable.)
- A cross recess is provided at the bolt head, enabling temporary fastening with a screwdriver.
- Enables quick DIN rail mounting and removal. (TX-60DF is not applicable.)

SPECIFICATIONS (RATINGS, PERFORMANCE)

Type Specification	TX-60DF		TX-150DF		TX-150MDF15		TX-150MDF25	
	Primary side	Secondary side	Primary side	Secondary side	Primary side	Secondary side	Primary side	Secondary side
Rated insulation voltage (Ui)	600V							
Rated current-carrying capacity (Ith)	175A		310A		310A	80A	155A	80A
Max. wire size	60mm ² (M8)	14mm ² (M6)	150mm ² (M10)	38mm ² (M8)	150mm ² (M10)	22mm ² (M6)	60mm ² (M8)	22mm ² (M6)
Screw size	M8X16 (1 pcs.)	M6X12 (2 pcs.)	M10X25 (1 pcs.)	M8X16 (2 pcs.)	M10X25 (1 pcs.)	M6X12 (5 pcs.)	M8X16 (2 pcs.)	M6X12 (5 pcs.)
Withstand voltage	2,500V AC / 1min.							
Lightning impulse	±7.2kV / 3 times for each pole (1.2 / 50 μs)				±7.4kV / 3 times for each pole (1.2 / 50 μs)			
Ambient operating temperature	-25 to 50°C							
Storing temperature	-40 to 85°C							
Altitude	2,000 m or less							

Please refer to the accessory for the dimensions of crimp terminals.

How to order

TX - 60DF SUS × 10 XD - 17 MR

① ② ③ ④ ⑤
Assembly dimensions

No.	Item	Code	Description	Remarks	
①	Basic type	TX-□DF	□ : Applicable wire size	1 terminal → 2 terminal branch type (Rail assembly)	
		TXS-□DF		1 terminal → 2 terminal branch type (Shaft assembly)	
②	Screw type	No code	Iron screw		
		SUS	Stainless steel screw		
③	No. of poles	1 to max.	TX-60DF	1 to 19	Max. pole No. is less than 600mm of rail length. (In case over 600mm, max. pole No. is less than 1,000mm of reinforced rail (TKB-D).)
			TX-150DF	1 to 12	
			TXS-60DF	1 to 9	
			TXS-150DF	1 to 6	
④	Rail	XD	TXB-D rail type	Punched rail (Recommended maximum length : 600mm)	
		XF	TXB-F rail type	U-cut rail (Recommended maximum length : 600mm)	
		(blank)		Not specified for shaft-mounting model only.	
⑤	Tropical region type	(blank)		Standard	
		MR	Tropical region type	Special model	

* For purchase of a single unit, specify ① and ② only.

TX - 150MDF 15 × 3 XD - 9

① ② ③ ④ ⑤
Assembly dimensions

No.	Item	Code	Description	Remarks
①	Basic type	TX-150MDF	TX-150MDF	-
②	Branch structure	15		1 terminal → 5 terminal branch type
		25		2 terminal → 5 terminal branch type
③	No. of poles	1 to max.	1 to 4	-
④	Rail	XD	TXB-D rail type	Punched rail

* For purchase of a single unit, specify ① and ② only.



TX-□DF TYPE

STANDARD PRODUCTS

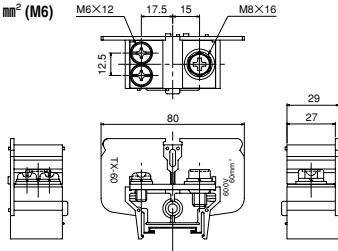
TX-60DF (175A)

Applicable wire size Primary side 38 to 60 mm² (M8), Secondary side 5.5 to 14 mm² (M6)



●Applicable accessories

End plate	TXE-38
Standard marker strip	TUM-2
Standard rail	TXB
End clamp	TXL
Cover	TUC-40 1M



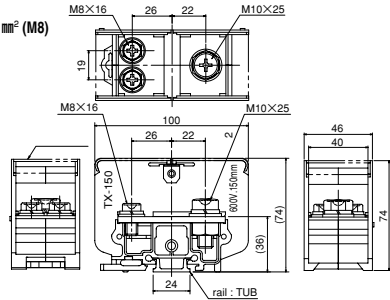
TX-150DF (310A)

Applicable wire size Primary side 100 to 150 mm² (M10), Secondary side 8 to 38 mm² (M8)



●Applicable accessories

Standard marker strip	TUM-2
Standard rail	TXB
End clamp	TXL
Cover	With TXC-150



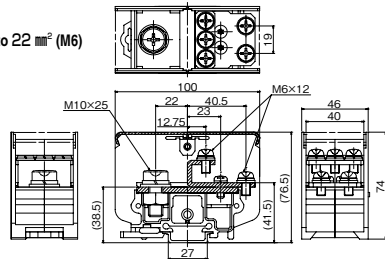
TX-150MDF15 (Primary side : 310A) (Secondary side : 80A)

Applicable wire size Primary side 100 to 150 mm² (M10), Secondary side 5.5 to 22 mm² (M6)



●Applicable accessories

Standard marker strip	TUM-2
Standard rail	TXB
End clamp	TXL
Cover	With TXC-150



TX-150MDF25 (Primary side : 155A) (Secondary side : 80A)

Applicable wire size Primary side 38 to 60 mm² (M8), Secondary side 5.5 to 22 mm² (M6)



●Applicable accessories

Standard marker strip	TUM-2
Standard rail	TXB
End clamp	TXL
Cover	With TXC-150

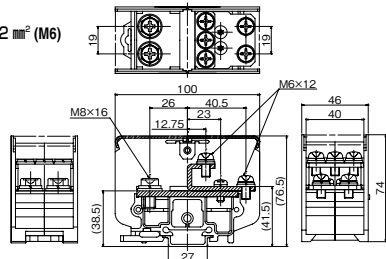
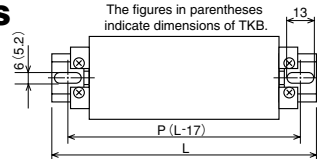


TABLE OF ASSEMBLED DIMENSIONS

TX type assembly on punched rail

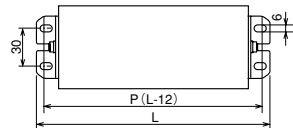
TXB-D type



Type Pole	TX-60DF			TX-150DF			TX-150MDF15, TX-150MDF25			Type Pole
	P	L	Rail	P	L	Rail	P	L	Rail	
1	60	77	XD-4	80	97	XD-5	80	97	XD-5	1
2	100	117	XD-6	120	137	XD-7	120	137	XD-7	2
3	120	137	XD-7	160	177	XD-9	160	177	XD-9	3
4	140	157	XD-8	200	217	XD-11	200	217	XD-11	4
5	180	197	XD-10	260	277	XD-14				5
6	200	217	XD-11	300	317	XD-16				6
7	240	257	XD-13	340	357	XD-18				7
8	260	277	XD-14	400	417	XD-21				8
9	300	317	XD-16	440	457	XD-23				9
10	320	337	XD-17	480	497	XD-25				10
11	360	377	XD-19	540	557	XD-28				11
12	380	397	XD-20	580	597	XD-30				12
13	400	417	XD-21							13
14	440	457	XD-23							14
15	460	477	XD-24							15
16	500	517	XD-26							16
17	520	537	XD-27							17
18	560	577	XD-29							18
19	580	597	XD-30							19
20										20

TX type with shaft

TXS type



Type Pole	TXS-60DF		TXS-150DF		Type Pole
	P	L	P	L	
2	88	100	116	128	2
3	117	129	162	174	3
4	146	158	208	220	4
5	175	187	254	266	5
6	204	216	300	312	6
7	233	245			7
8	262	274			8
9	291	303			9
10					10



TX-□DF TYPE

ACCESSORIES

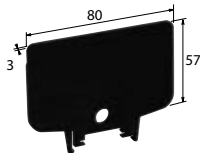
LIST OF APPLICABLE ACCESSORIES

Accessory Type	End plate	Marker strip		Marker strip case	Marker sheet	Aluminum rail		End clamp		Cover	Jumper
		Applicable	Semi-applicable			Applicable	Semi-applicable	Applicable	Semi-applicable		
TX-60DF	TXE-38						TKB TUB		TJL TUL-W	TUC-40 TUC-40-V0	—
TX-150DF	—					TXB					—
TX-150MDF15	—	TUM-2		TUM marker strip case 10	—			TXL		TXC-150 TXC-150-V0	—
TX-150MDF25	—										—

End plate

(Order unit: 100)

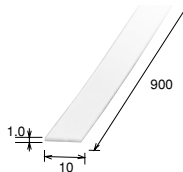
●TXE-38



Marker strip

(Order unit: 100)

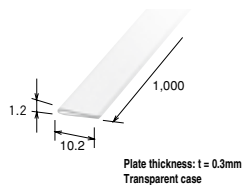
●TUM-2



Marker strip case

(Order unit: 100)

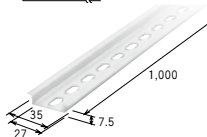
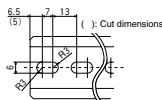
●TUM Marker case 10



Aluminum rail

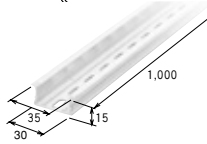
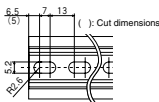
(Order unit: 50)

●TXB (DIN rail)



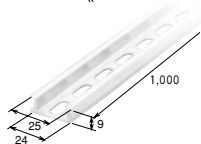
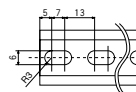
Applicable end clamp
TXL,TJL

●TKB (reinforced DIN rail)



Applicable end clamp
TXL,TJL

●TUB

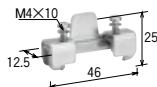


Applicable end clamp
TUL-W

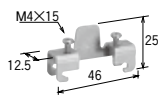
End clamp

(Order unit: 50)

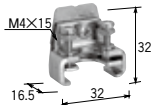
●TXL



●TJL



●TUL-W



Cover

(Order unit: 20)

●TUC-40 1M



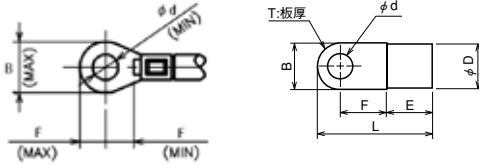
*The end "V0" is a flame retardant grade UL94V-0 specification product.

Rail cap

Please refer to the page C15 for the rail cap.

crimp terminals

The following tables show reference dimensions of crimp terminals.



TX-□DF

●Primary side * With insulating cover

Type	Terminal screw size	Wire size	ϕd (MIN)	B (MAX)	F (MAX)	F (MIN)
TX-60DF	M8×16	60mm ²	8.1	26.9	13.5	11.1
TX-150DF	M10×25	150mm ²	10.1	39.9	21.8	14.6

●Secondary side (Equivalent of NICHIFU products) * With insulating cover

Type	Terminal screw size	Wire size	ϕd	B	L	F	E	ϕD	T	(Reference)	Attachment propriety	
										Applicable model	Up side	Down side
TX-60DF	M6×12	5.5mm ²	6.4	12	23	10.5	6.5	5.6	-	R5-5-6	○	○
				10	22.5				-	R8-6S	○	×
		8mm ²		12	23.5	9.1	8.4	7.1	-	R8-6	○	×
				10	26.5	11.5	10	9	-	R14-6S	○	○
		14mm ²		12	27.5				-	R14-6	○	○
				16	32.5	14.5	-	R14-6L	×	×		
TX-150DF	M8×16	8mm ²	8.4	15	29.5	13.6	8.4	7.1	-	R8-8	○	○
				12	27.5	11.5			-	R14-8S	○	×
		14mm ²		16	32.5	14.5	10	9	-	R14-8	○	○
				11.8	31.4	13.5	12	11.6	-	R22-8S	○	○
		16.5		33.3	13.05	-			R22-8	○	○	
		22mm ²		15.3	39	18.35	13	13.4	-	R38-8S	○	○
				22	42.3	18.3			-	R38-8	×	×

TX-150MDF□

●Primary side (Equivalent of Japan Solderless Terminal products) * With insulating cover

Type	Terminal screw size	Wire size	ϕd	B	L	F	E	ϕD	T	(Reference) Applicable model
TX-150MDF15	M10×25	150mm ²	10.5	36	66	21	27	26.5	3.2	R 150-10
						23				150-10
TX-150MDF25 ¹	M8×16	38mm ²	8.4	15.5	38	16	14	13.3	1.8	38-S8
		60mm ²		16	46.7	20.7	18	15.5	2	60-S8

●Secondary side (Equivalent of Japan Solderless Terminal products) * Insulation sheath need not be attached.

Type	Terminal screw size	Wire size	ϕd	B	L	F	E	ϕD	T	(Reference) Applicable model
TX-150MDF15 ¹	M6×12	22mm ²	6.4	12	30	12	12	11.5	1.8	22-S6
TX-150MDF25 ¹										

¹ For connections, use crimp terminals that do not exceed the above specified dimensions.