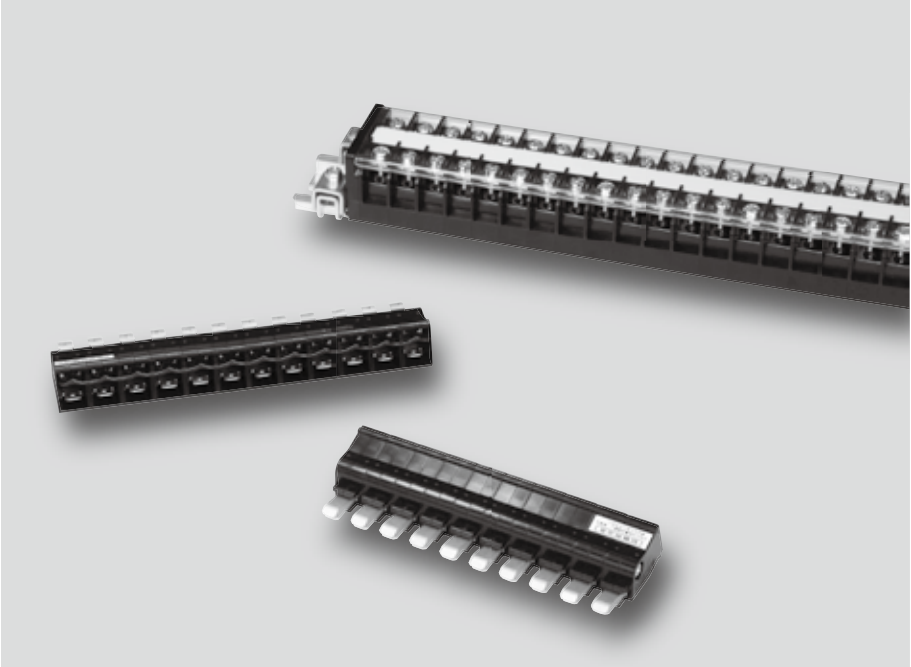




CHX TYPE



FEATURES

Testing time reduction

Time of withstand voltage test and sequence check can be shortened by easy connection of CHX connector. In addition, jumper (Accessory) can connect circuits between adjoining at once.

Applicable to general screw-up type terminal block

CHX type is applicable to 5.5 mm² wire size (11 mm pitch) terminal block.

SPECIFICATIONS (RATINGS, PERFORMANCE, STANDARD OPERATING CONDITION)

Specification	Type	CHX-5.5
Rated insulation voltage (Ui)		250V
Rated current-carrying capacity (Ith)		4A
Applicable wire size		AWG22-14 (0.5 to 2mm ²)
Applicable receptacles		#205 series (AMP) 170182-2 (AWG22-18), 170180-2 (AWG18-14)
Applicable terminal block type		TX-5.5, TX-5.5S, TXW-5.5, TQ-5.5, TQW-5.5, TJ-5.5
Insulation resistance		20MΩ or more
Power-frequency withstand voltage		2,500V AC / 1 min.
Ambient operating temperature		-25 to 50°C
Storing temperature		-40 to 85°C
Relative humidity		45 to 85%
Altitude		2,000 m or less

How to order of terminal blocks

[Testing connector]

CHX - 5.5 × 10

Type name
CHX-3.5
CHX-5.5

code	No. of poles
8	8 pole
10	10 pole
12	12 pole
13*	13 pole

* CHX-5.5 only.



[Jumper]

CHX - 5.5SB × 10 **C - B**

Type name
CHX-3.5SB
CHX-5.5SB

With insulation coat / black color

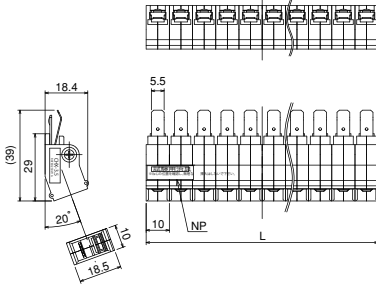
code	No. of poles
8	8 pole
10	10 pole
12	12 pole
13*	13 pole

* CHX-5.5SB only.

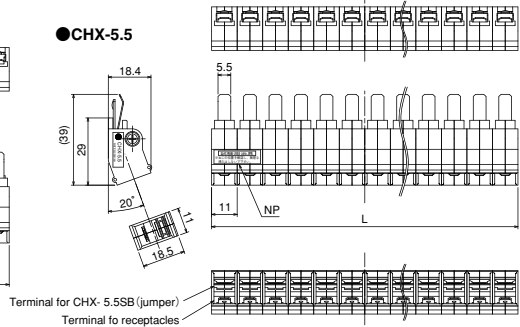


OUTLINES

●CHX-3.5



●CHX-5.5



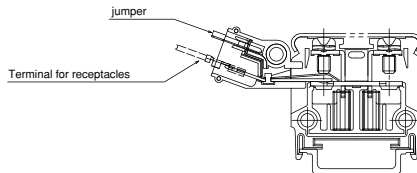
No. of poles and length

No. of poles	8	10	12
L	80	100	120

No. of poles and length

No. of poles	8	10	12	13
L	88	110	132	143

CONNECTION EXAMPLES



Jumper can connect circuits between adjoining at once.