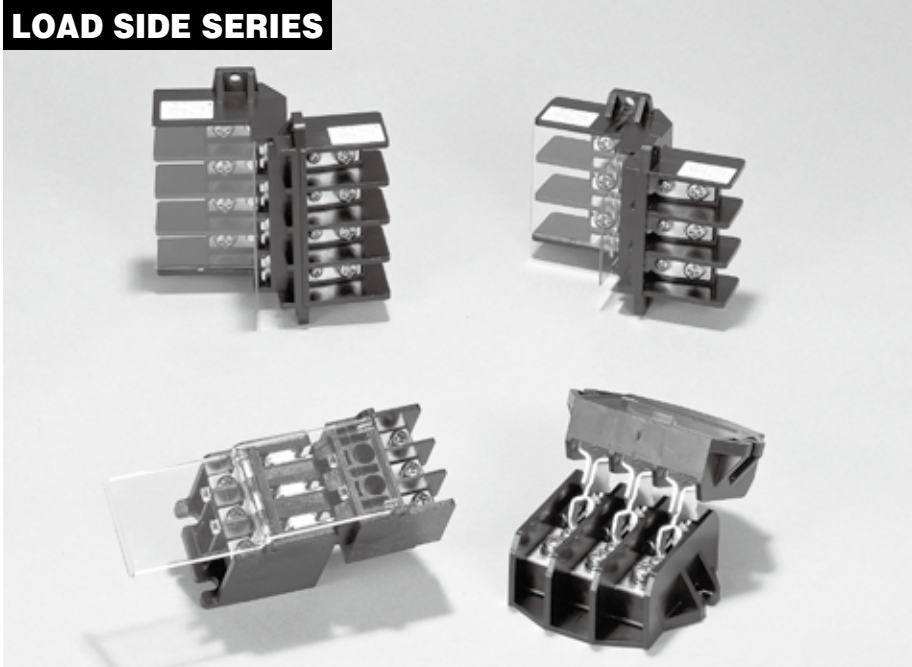


CONTROL CENTER PARTS

LOAD SIDE SERIES



SPECIFICATION

Basic type Specification	LJ	MEJA		SJ
Type	LJ-80P LJ-80T	MEJA-125P MEJA-125C MEJA-225P MEJA-225C	MEJA-125P4 MEJA-125C4 MEJA-225P4 MEJA-225C4	SJ-100P SJ-100C
Rated insulation voltage (Ui)	600V			
Rated current-carrying capacity (Ith)	100A	125A 225A		100A
Number of poles	3-poles	3-poles	4-poles	3-poles
Screw size	M6x12	125P.C 225P.C	M6x15 M8x16	M5x10
Rated withstand voltage	3,000V AC / 1 min.			
Lightning impulse	±10kV / 3 times for each pole (1.2 / 50 µs)			
Operating temperature	-25 to 50°C			
Storing temperature	-40 to 85°C			
Altitude	2,000 m max.			

A SWITCH

B PILOT LAMP &
INDICATOR

C CONNECTING
DEVICES

D ELECTRONIC
DEVICES

E CONTROL
CENTER PARTS

CONTROL CENTER PARTS

HOW TO ORDER

●Tropical versions are custom-made products.

SJ-100 P Moisture resistance

Basic type · Current

	Basic type	Current
LJ	LJ-80P	100A
	LJ-80T	
MEJA	MEJA-125P	125A
	MEJA-125C	
	MEJA-225P	225A
	MEJA-225C	
	MEJA-125P4	125A
	MEJA-125C4	
MEJA-225P4	225A	
MEJA-225C4		
SJ	SJ-100P	100A
	SJ-100C	

Tropical version (custom-made)

Terminal screws are made of stainless steel.

Connection type

Code	Connection
P	Plug (Control Center unit side)
T	Terminal (Panel side)
C	Clip (Panel side)

* Contact us for using lubricant at contacting parts.



LOAD SIDE SERIES (PRIMARY LOAD DISCONNECT DEVICE)

SJ TYPE

FEATURES

The SJ series achieves greater downsizing than the former load disconnect device, thereby contributing to space saving of the control center.

The terminals can be used at 200 or 300 A by wiring them with a jumper.

SPECIFICATIONS (RATINGS, PERFORMANCE)

Type	SJ-100P (Plug)	SJ-100C (Clip)
Rated insulation voltage (UI)	600V	
Rated current-carrying capacity (Ith)	100A	
Weight	105g	150g

STANDARD PRODUCTS

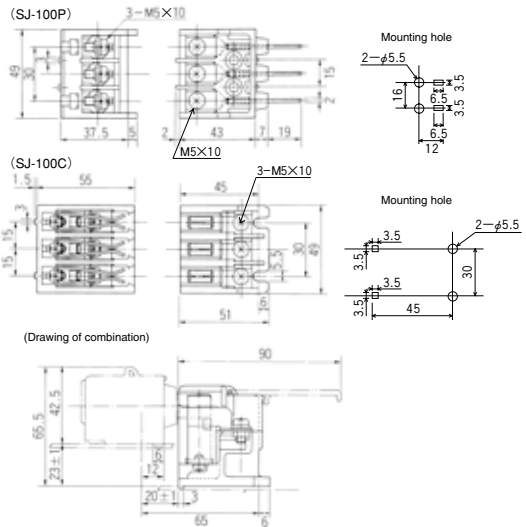
SJ-100P (Plug) SJ-100C (Clip)



SJ-100C



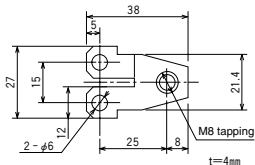
SJ-100P



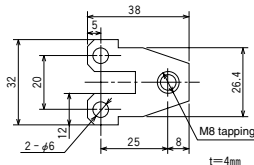
ACCESSORIES

This is an inter-polar jumper as use of 100A or more. Please contact us for how to use.

● SJ jumper 2



● SJ jumper 2S



● SJ jumper 3

