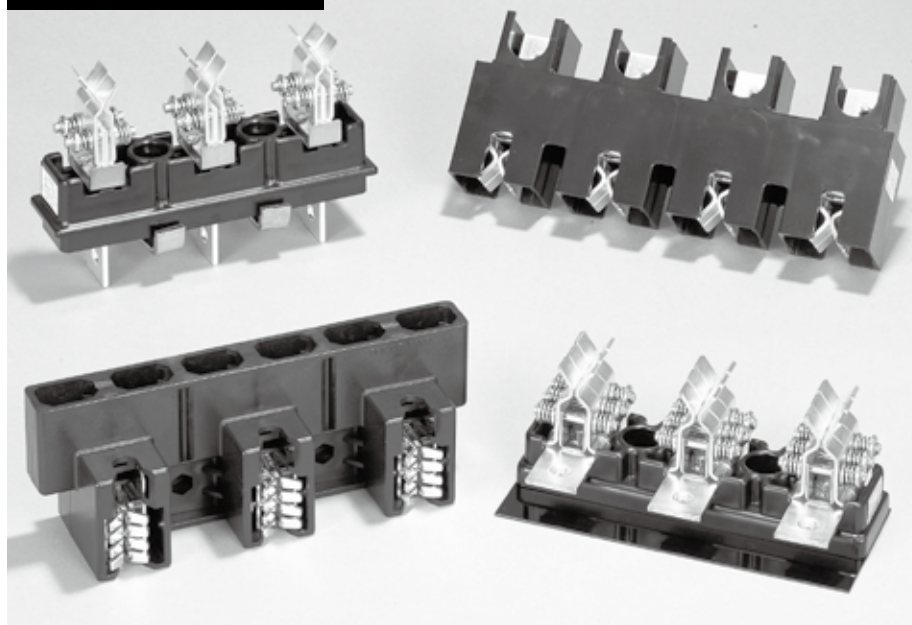


CONTROL CENTER PARTS

LINE SIDE SERIES



SPECIFICATIONS

Basic type Specification	KJ	NJ	CJ	HJ	HCJ	PDS	KJ-PS
Type	KJ-125F KJ-125FL KJ-250F KJ-250FL KJ-125B KJ-125BL KJ-250B KJ-250BL	NJ-125F NJ-125FL NJ-250F NJ-250FL NJ-250F6	CJ-125F CJ-125FL	HJ-125B HJ-125BL HJ-125B4 HJ-125BL4 HJ-250B HJ-250BL HJ-250B4 HJ-250BL4	HCJ-125B HCJ-125BL HCJ-125B4 HCJ-125BL4	PDS-100A PDS-100A1 PDS-200A PDS-200A1 PDS-350A PDS-350A1	KJ-PS
Rated insulation voltage (UI)	600V						
Rated current-carrying capacity (Ith)	125A 250A	125A 250A	125A	125A 250A	125A	100A 200A 350A	250A
Number of poles	3-poles	3-poles	3-poles	3-poles 4-poles	3-poles 4-poles	1-pole 3-poles	3-poles
Screw size	M8					Crimp type	M8
Rated withstand voltage	3,000V AC / 1 min.						
Lightning impulse	±10kV / 3 times for each pole (1.2 / 50 μs)						
Operating temperature	-25 to 50°C						
Storing temperature	-40 to 85°C						
Altitude	2,000 m max.						

HOW TO ORDER

KJ-125 F L Moisture resistance

Basic type

Basic type	Current
KJ	KJ-125F
	KJ-125FL
	KJ-250F
	KJ-250FL
	KJ-125B
	KJ-125BL
NJ	KJ-250B
	KJ-250BL
	NJ-125F
	NJ-125FL
	NJ-250F
	NJ-250FL
CJ	NJ-250F6 (High short-circuit current)
	CJ-125F
HJ	CJ-125FL
	HJ-125B
HCJ	HJ-125BL
	HJ-125B4
	HJ-125BL4
	HJ-250B
	HJ-250BL
	HJ-250B4
PDS	HJ-250BL4
	HCJ-125B
	HCJ-125BL
	HCJ-125B4
	HCJ-125BL4
	PDS-100A
KJ-PS	PDS-100A1
	PDS-200A
	PDS-200A1
	PDS-350A
	PDS-350A1
	KJ-PS

Tropical version (custom-made)

Terminal screws are made of stainless steel.

Bus bar thickness

Code	Thickness
(none)	5~6mm
L	3~4mm

Wire connection type and bus tickness

Code	Wire connection	Type
F	Front connection (3 pole)	KJ, NJ CJ
B	Back connection (3 pole)	KJ, HJ HCJ
B4	Back connection (4 pole)	HJ, HCJ
A	Crimp style (3 pole)	PDS
A1	Crimp style (3 pole) 1 pole additional product (for 4 pole use.)	PDS

* Contact us for using lubricant at contacting parts.

A SWITCH

B PILOT LAMP & INDICATOR

C CONNECTING DEVICES

D ELECTRONIC DEVICES

E CONTROL CENTER PARTS



LINE SIDE SERIES (PRIMARY POWER DISCONNECT DEVICE)

NJ TYPE

This series has a similar basic shape to that of the KJ series, but they have been developed especially for the dual-sided control center. Accordingly, its height and width are more compact.

FEATURES

■ Compact type

The height and width have been made smaller by 15 mm and 8 mm than those of the KJ series to contribute to space saving in the control center.

F / FL type

This is the surface connection type that is available in type F for busbar thickness of 5 to 6 mm or type FL for 3 to 4 mm.

Each type is further classified into 2 models for current of 125 and 250A. Thus, a total of 4 models is available for selection.

SPECIFICATIONS (RATINGS, PERFORMANCE)

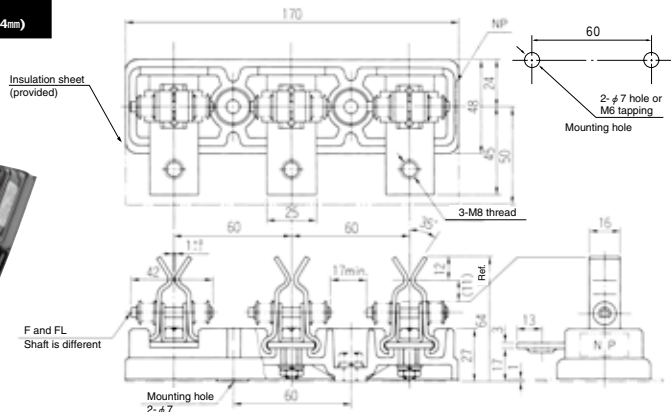
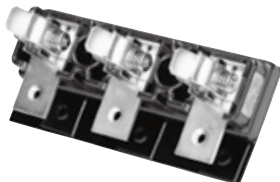
Type	NJ-125F	NJ-125FL	NJ-250F	NJ-250FL	NJ-250F6
Rated insulation voltage (Ui)	600V		600V		
Rated current-carrying capacity (Ith)	125A		250A		
Busbar thickness	5 to 6mm	3 to 4mm	5 to 6mm	3 to 4mm	5 to 6mm
Weight	415g		500g		630g

STANDARD PRODUCTS

NJ-125F (for 5 to 6mm)

NJ-125FL (for 3 to 4mm)

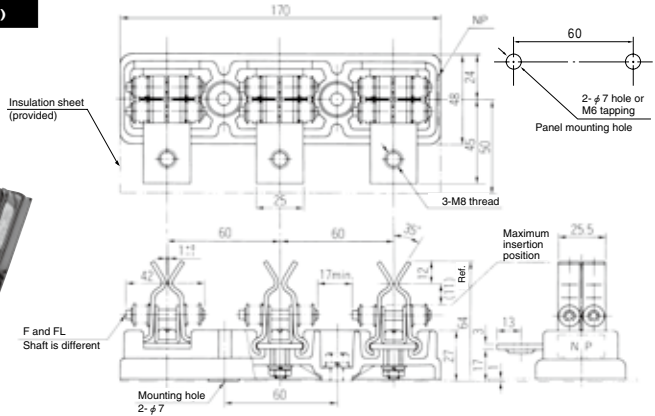
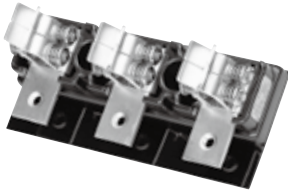
– Front connection type –



STANDARD PRODUCTS

NJ-250F (for 5 to 6mm)
NJ-250FL (for 3 to 4mm)

– Front connection type –

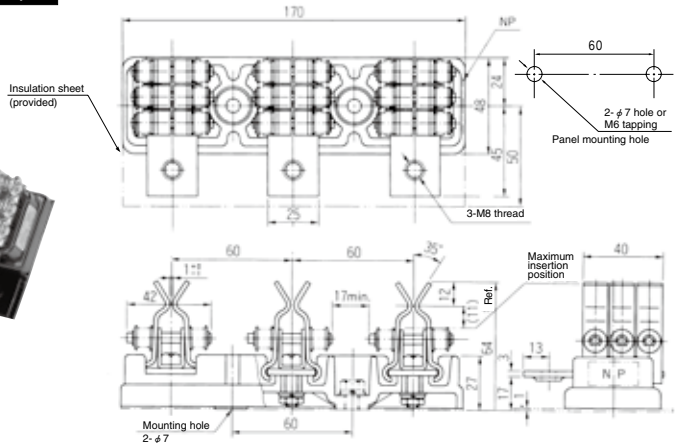
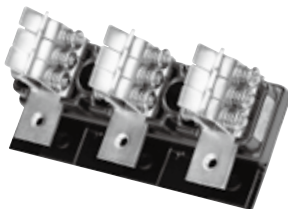


CUSTOM PRODUCTS

The model has been developed to comply with increased short-circuit current involved in larger transformers and has excellent short-circuit current characteristics (30kA in r.m.s. value and 75kA in pulse height value).

NJ-250F6 (for 5 to 6mm)

– Front connection type –



⚠ Precaution on use

- An insulation sheet is provided as standard for use to secure the insulation distance from the panel surface. Be sure to use it when mounting this device.