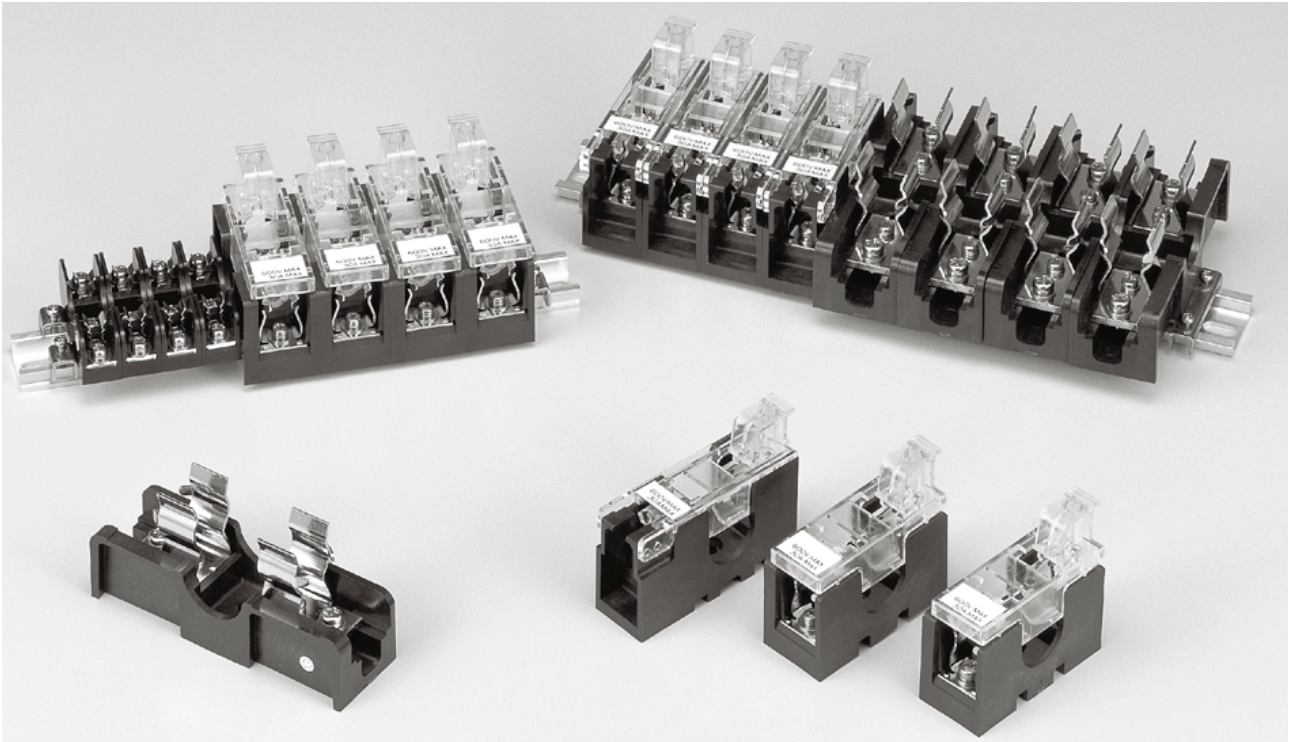




# FUSE HOLDER



## FEATURES

- **Conformed to JIS C 8314, C8352, and JEM1103.**

Both air clearance and creepage distance for insulation in JEM standard 1103 (1976) "insulation distance for controllers" are conformed to rated insulation voltage of 600 V AC / DC in the bear crimp condition (250 V AC or DC for F-10 type).

- **Excellent heat resistance**

For the insulation base of 30 A or more, high-performance engineering plastic is used. It assures high heat resistance and keeps normal condition even if it is left in a furnace of 150°C for 5 hours. Sufficient safety is assured against a temperature increase due to overcurrent.

- **Light weight and high rigidity**

Sufficient strength is retained against rough handling to assure comfortable use. This fuse holder is highly resistant against shock and vibrations to hold the fuse in place.

## SPECIFICATIONS (RATINGS, PERFORMANCE)

Type	F-10	PF-34 PF-34S	PF-35 PF-35S	DF-34	DF-35	NF-61 NF-61S	NF-62 NF-62S
Rated insulation voltage (Ui)	250V	600V					
Rated current-carrying capacity (Ith)	10A	30A				60A	
Max. wire size	5.5mm <sup>2</sup>	14mm <sup>2</sup>				22mm <sup>2</sup>	
Screw size	M4×8	M4×10	M5×12	M4×10	M5×12	M5×10	
Applicable fuse	10A (φ 6.4×30mm)	30A (φ 15×50mm)				30A (φ 20×57mm)	60A (φ 20×75mm)
Withstand voltage	1 minute at 2,500V AC						
Lightning impulse	±7kV / 3 times for each pole (1.2 / 50 μs)						
Operating temperature	-20 to 50°C	-40 to 70°C					
Temperature increase (at rated current)	35K					45K	
Heat resistant performance	70°C 5H OK	150°C 5H OK					
Insulation resistance (1,000 MV DC)	1,000 MΩ min.						

## How to order of terminal blocks

Please instruct type code for the non-assemble order and accessories.

**PF-34** × **10** **UF**

Type name		
F-10	PF-35S	NF-61S
PF-34	DF-34	NF-62
PF-34S	DF-35	NF-62S
PF-35	NF-61	

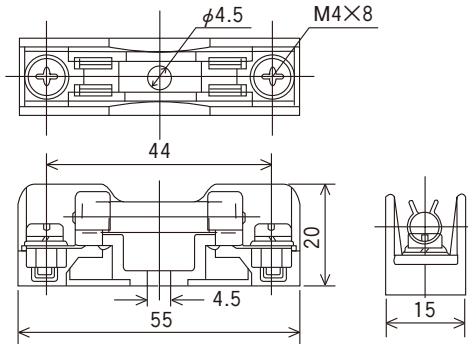
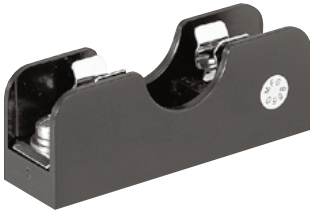
Pole      Rail type

Code	Description
UD	TUB punched rail
UF	TUB U-cut rail
XD	TXB punched rail
XF	TXB U-cut rail

## STANDARD PRODUCTS

F type

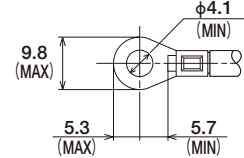
### F-10



● Applicable accessories

Standard rail	TUB
End clamp	F-B end clamp
Rail mounting tab	For F-BTU tab
Cover	F-10 carrier

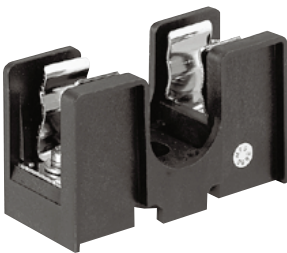
● Applicable crimp terminal



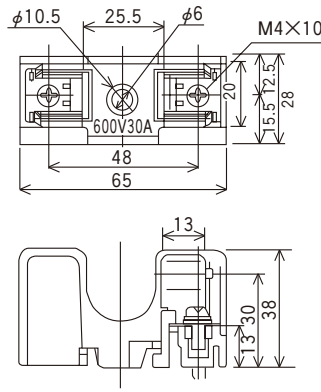
\* With insulation cover

PF type: (PF can be mounted on TUB rail without a rail mounting tab.)

### PF-34 · PF-34S



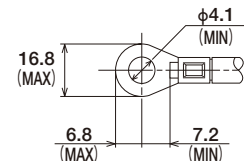
Note: Type name of PF-34 with a rotation stopper is PF-34S. The tailing letter "S" stands for a stopper.



● Applicable accessories

Standard rail	TUB
End clamp	F-B end clamp
Cover	PF-30 carrier

● Applicable crimp terminal

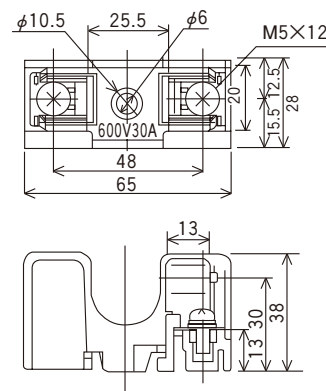


\* With insulation cover

### PF-35 · PF-35S



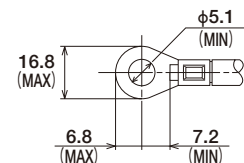
Note: Type name of PF-35 with a rotation stopper is PF-35S. The tailing letter "S" stands for a stopper.



● Applicable accessories

Standard rail	TUB
End clamp	F-B end clamp
Cover	PF-30 carrier

● Applicable crimp terminal



\* With insulation cover

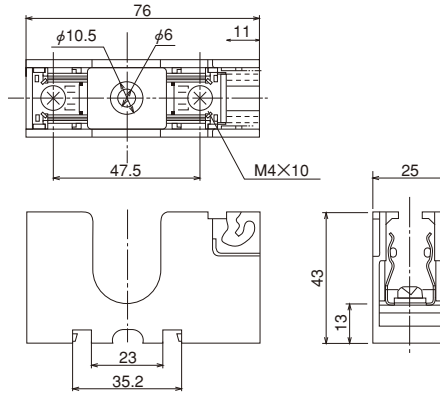
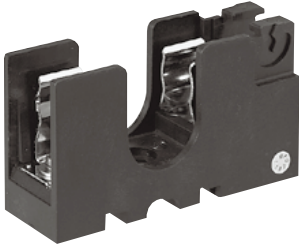


# FUSE HOLDER

## STANDARD PRODUCTS

DF type: (DF can be mounted on DIN rail (TXB) without a rail mounting tab.)

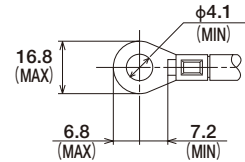
### DF-34



#### ● Applicable accessories

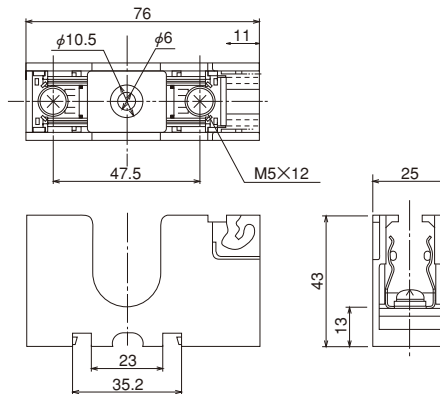
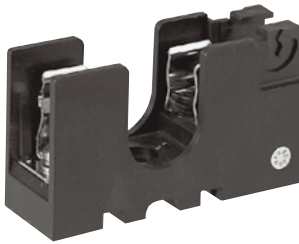
Standard rail	TXB
End clamp	AFL
Cover	DF-30 carrier

#### ● Applicable crimp terminal



\* With insulation cover

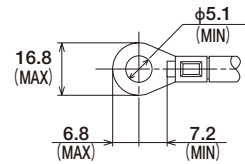
### DF-35



#### ● Applicable accessories

Standard rail	TXB
End clamp	AFL
Cover	DF-30 carrier

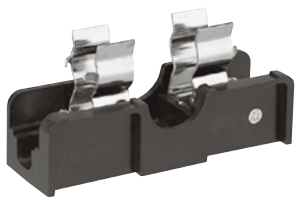
#### ● Applicable crimp terminal



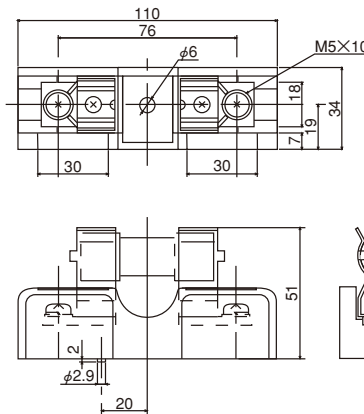
\* With insulation cover

NF type

### NF-61 · NF-61S



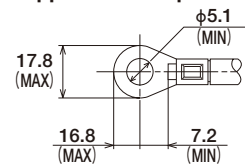
Note: Type name of NF-61 with a rotation stopper is NF-61S. The tailing letter "S" stands for a stopper.



#### ● Applicable accessories

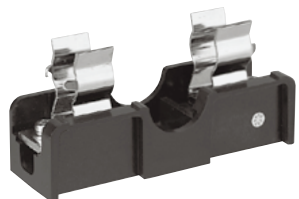
Standard rail	TXB
End clamp	AFL
Rail mounting tab	For F-BTX tab
Cover	NF-61 carrier

#### ● Applicable crimp terminal

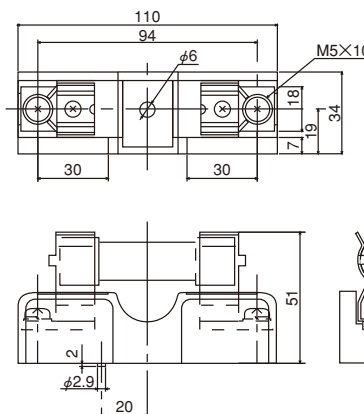


\* With insulation cover

### NF-62 · NF-62S



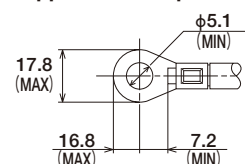
Note: Type name of NF-62 with a rotation stopper is NF-62S. The tailing letter "S" stands for a stopper.



#### ● Applicable accessories

Standard rail	TXB
End clamp	AFL
Rail mounting tab	For F-BTX tab
Cover	NF-62 carrier

#### ● Applicable crimp terminal



\* With insulation cover



# FUSE HOLDER

## ACCESSORIES

### Carrier

A nameplate seal is provided.  
Attach it when using the carrier.

(Order unit: 100)

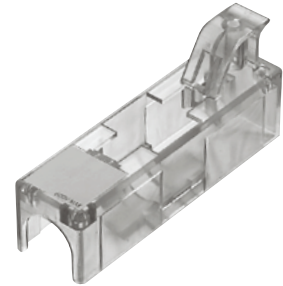
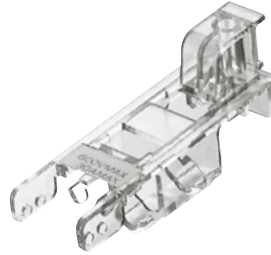
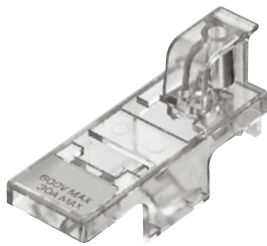
●F-10 carrier

●PF-30 carrier

●DF-30 carrier

●NF-61 carrier  
●NF-62 carrier

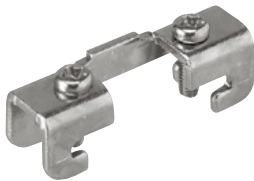
This carrier can be mounted on the holder and used as a lever.



### End clamp

(Order unit: 100)

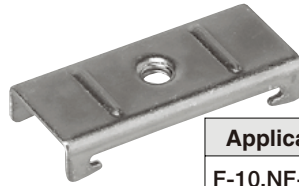
●F-B end clamp (for TUB)



### Rail mounting tab

(Order unit: 100)

●F-B tab (for TUB)



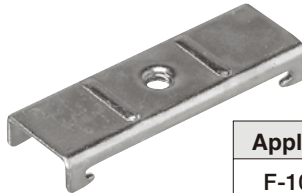
#### Applicable types

F-10,NF-61,NF-61S  
NF-62,NF-62S  
DF-34,DF-35

●AFL (for TXB)



●F-B DIN tab (for TXB)



#### Applicable types

F-10  
PF-34, PF-34S  
PF-35, PF-35S  
NF-61, NF-61S  
NF-62, NF-62S

### Nameplate label

(Order unit: 100)

This is a label for attaching on the upper side of the carrier.

Nameplate	Applicable types
250V MAX 10A MAX	F-10
600V MAX 30A MAX	PF-34, 34S PF-35, 35S
600V MAX 30A MAX	DF-34 DF-35
600V MAX	NF-61 NF-62

## MOUNTING HOLE DIMENSIONS

F-10	PF-34, PF-35	PF-34S, PF-35S	DF-34, DF-35	NF-61, NF-62	NF-61S, NF-62S