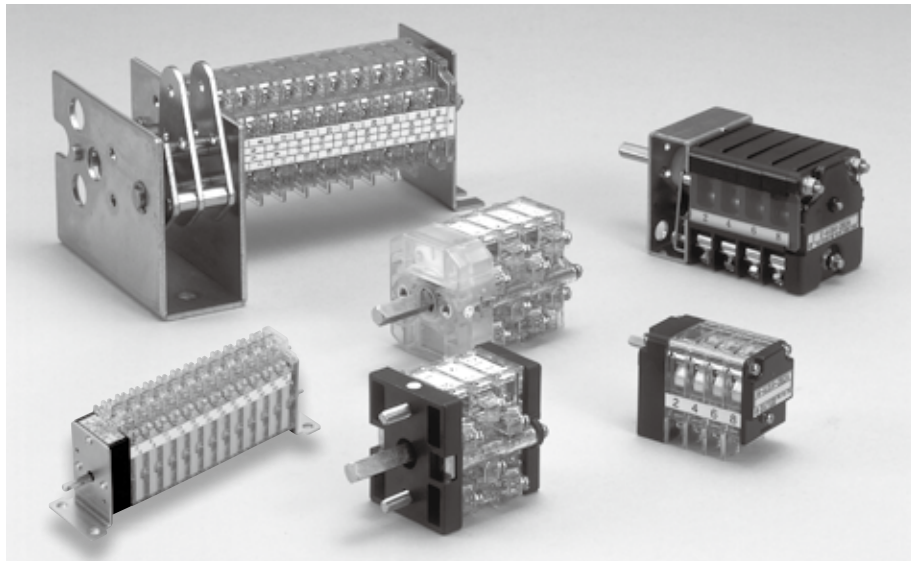




# AUXILIARY SWITCH



## FEATURES

Control devices for the circuit breaker play important roles for protecting the power system. It is an auxiliary switch that functions interlocking with the main circuit switching mechanism of the circuit breaker or the insulated switch, therefore high reliability is required.

### ■ Rotary type auxiliary switch

- Cam-operated type
  - B type auxiliary switch
    - Applicable for shutting down relatively large current in frequently switching uses.
    - BMZ and CMZ type auxiliary switches
      - High-reliable auxiliary switches that have higher breaking capacity and higher impact resistance (prevention of chattering) than the conventional ones.
      - All the wiring terminals are located on one side, for making wiring work easier.
  - Drum type
    - M type auxiliary switch
      - Compactly designed and yet relatively high in breaking performance; therefore most suitable for miniaturize for the equipment.

### ■ Push-type auxiliary switch

- UX-33A
  - Applicable for a high-voltage electromagnetic contactor or a vacuum circuit breakers. The contact parts has a structure that can be incorporate a magnet, so that it's possible to increase the breaking capacity of the contacts.

## SPECIFICATIONS (RATINGS, PERFORMANCE)

Item	B-AUS	BM-AUS	BMZ	CMZ	S-AUS	M-AUS	UX-33A	
Rating	Rated insulation voltage (UI)				250V			
	Rated current-carrying capacity (Ith)				10A			
	Screw size				M3.5x7/PC board	M4x8 / faston#250	M4x8	
Performance	500,000		500,000	50,000	30,000	10,000	250,000	
	(110V DC 1.5A L/R=40ms)		(110V DC 1.5A L/R=40ms)	(50 DC 5A L/R=40ms)	(110V DC 10A L/R=40ms)	(110V DC 5A L/R=40ms)	(110V DC 2A L/R=40ms)	(110V DC 3A L/R=40ms)
	1,000,000		500,000		30,000	50,000	1,000,000	
	Mechanical life		Contact resistance		50 m Ω or less			
	Withstand voltage		2,500V for 1 min.		2,000V for 1 min.		2,500V for 1 min.	
Standard operating condition	Ambient temperature				-20°C to 60°C (No freezing)			
Altitude		2,000 m or less		1,000 m or less		2,000 m or less		

## HOW TO ORDER

Please choose a code below. Please ask us for special specifications (contact arrangement, shaft shape, confirmable standard etc.).

### [B-AUS type]

Ex. 1)

**B-AUS-05X**

Basic type

Spec No.

Ex.2)

**B-AUS 5-5 (1A1B)**

Basic type

No. of units

Contact arrangement

### [BM-AUS type]

Ex. 1)

**BM-AUS 1-05X**

Basic type

Spec No.

Ex.2)

**BM-AUS 1- 5 (1A1B)**

Basic type

No. of units

Contact arrangement

Fix bolt number

1	2 bolts of front (less than 7 units)
2	4 bolts of front and raer (more than 8 units)

Fix bolt number

1	2 bolts of front (less than 7 units)
2	4 bolts of front and raer (more than 8 units)

### [BMZ type]

Ex. 1)

**BMZ-03X**    -

Basic type

Spec No.

Ex.2)

**BMZ-5 (1A1B)**

Basic type

Contact arrangement

### [CMZ type]

Ex. 1)

**CMZ-03X**    -

Basic type

Spec No.

Ex.2)

**CMZ-5 (1A1B)**

Basic type

Contact arrangement

### [S-AUS type]

Ex. 1)

**S-AUS-03X**    -

Basic type

Spec No.

### [M-AUS type]

Ex. 1)

**M-AUS 6-3 (1A1B)**

Basic type

No. of units

Contact arrangement

### [UX-33A type]

**UX-33A 3A2B1DB-MR**

Basic type

Tropical region type (Special products)

Contact arrangement

5A1B	5A	1DB
4A2B	4A1B1DB	
3A3B	3A2B1DB	
2A4B	2A3B1DB	
1A5B	1A4B1DB	

A,B contact··Standard contact

DB contact··Delay contact

※1DB contact parts (terminal No. 25-26) has a magnet that's a standard structure.

However, please specify when putting magnet into the 1A contact parts (terminal No. 11-12)

※Terminal No. 26 and 12, wiring on the ⊕ side is standard.

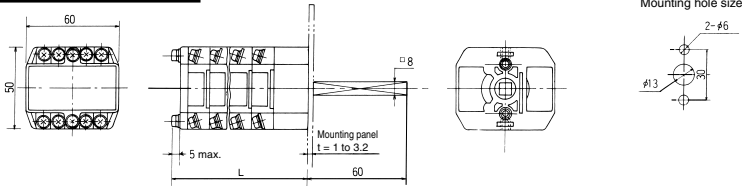
●In case of tropical treatment products, due to produced an order, please ask us about the delivery time and price separately.



# AUXILIARY SWITCH

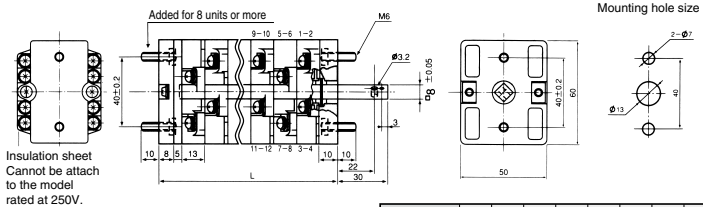
## OUTLINES

### B-AUS



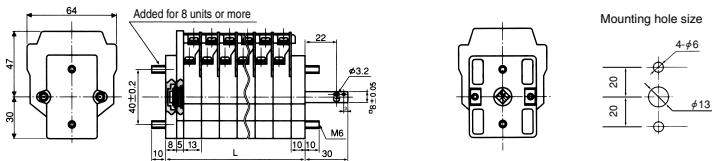
No. of units	3	4	5	6	7	8	9	10
L (mm)	70	83	96	109	122	135	148	161

### BH-AUS (BM-AUS)



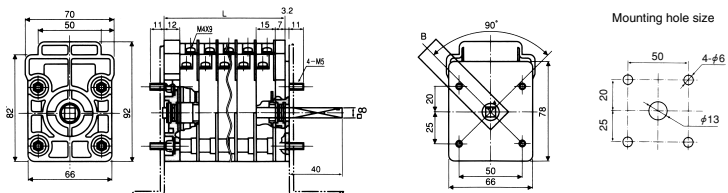
No. of units	1	2	3	4	5	6	7	8	9	10
L (mm)	36	49	62	75	88	101	114	127	140	153

### BMZ



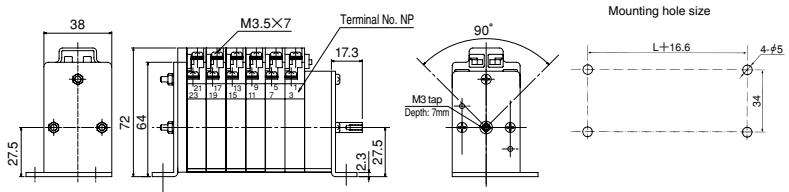
No. of units	1	2	3	4	5	6	7	8	9	10
L (mm)	36	49	62	75	88	101	114	127	140	153

### CMZ



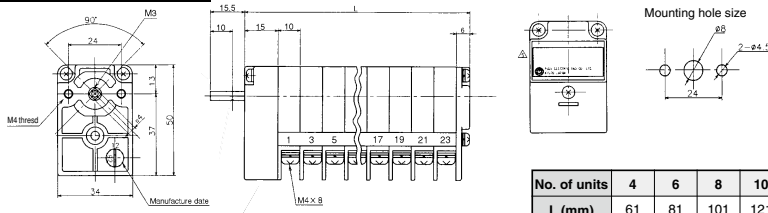
No. of units	1	2	3	4	5	6	7	8	9	10
L (mm)	33	49	64	79	94	109	124	129	154	169

## S-AUS



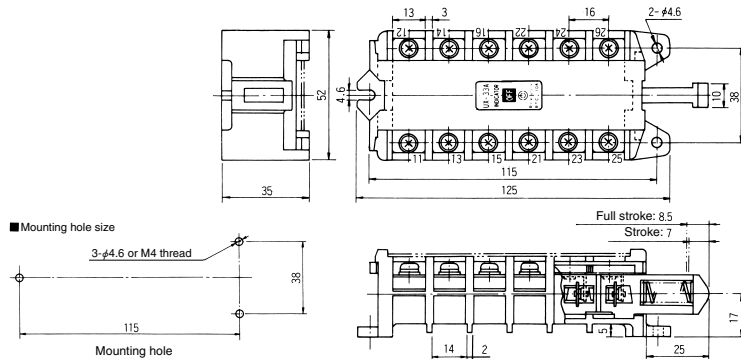
No. of units	1	2	3	4	5	6	7	8	9	10
L (mm)	31	42	53	64	75	86	97	108	119	130

## M-AUS



No. of units	4	6	8	10	12
L (mm)	61	81	101	121	141
Contact	2A2B	3A3B	4A4B	5A5B	6A6B

## UX-33A



### Indicator type

The ON / OFF status is shown by the indicator located at the center of the stage. This design ensures high reliability and safety as well as simple recognition.

● ON status → ● OFF status

