



LINE SIDE SERIES (PRIMARY POWER DISCONNECT DEVICE)

# KJ TYPE

Most standard series of power shutoff unit.

## FEATURES

### ■Broad range of models

The available models are classified into type F (surface connection) and type B (bottom connection) according to their wiring methods. Each type is further classified into 2 different models depending on bus thickness and current. Thus, a total of 8 models is available to meet different purposes.

### ■Compact type

This compact power disconnect device has been designed to comply with downsized controller centers.

### ■Quality insulation material

High-performance engineering plastic (modified PPF resin; 100% virgin material) that has excellent insulation, heat resistance, and impact resistance is used as insulation material.

#### F / FL type

This is the surface connection type that is available in type F for bus thickness of 5 to 6 mm or type FL for 3 to 4 mm. Each type is further classified into 2 models for current of 125 and 250A. Thus, a total of 4 models is available for selection.

#### B / BL type

This is the bottom connection type that is available in type B for bus thickness of 5 to 6 mm or type BL for 3 to 4 mm. Each type is further classified into 2 models for current of 125 and 250A. Thus, a total of 4 models is available for selection.

## SPECIFICATIONS (RATINGS, PERFORMANCE)

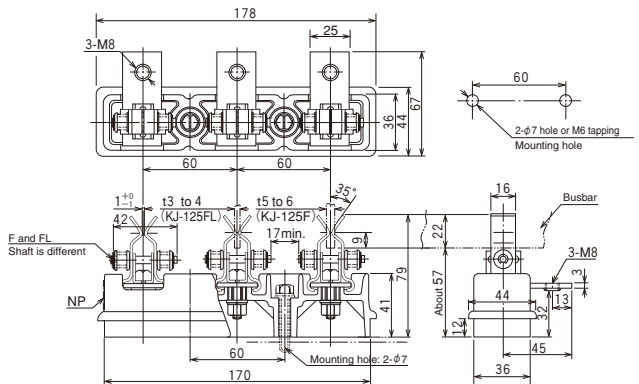
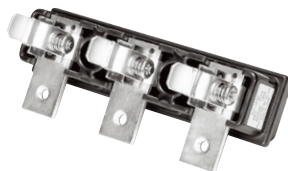
Type	KJ-125F	KJ-125FL	KJ-250F	KJ-250FL	KJ-125B	KJ-125BL	KJ-250B	KJ-250BL
Rated insulation voltage (UI)	600V				600V			
Rated current-carrying capacity (Ith)	125A		250A		125A		250A	
Busbar thickness	5 to 6mm	3 to 4mm	5 to 6mm	3 to 4mm	5 to 6mm	3 to 4mm	5 to 6mm	3 to 4mm
Weight	415g		500g		535g		675g	

## STANDARD PRODUCTS

**KJ-125F** (for 5 to 6mm)

**KJ-125FL** (for 3 to 4mm)

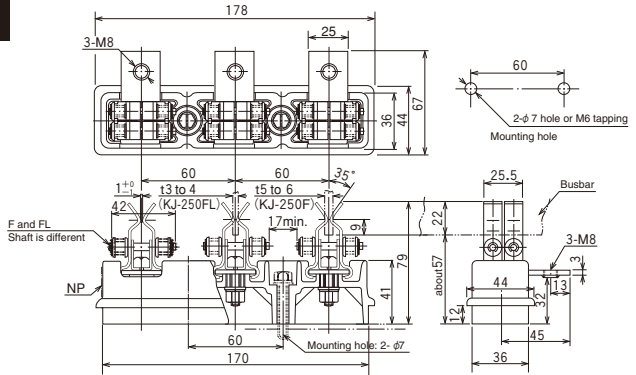
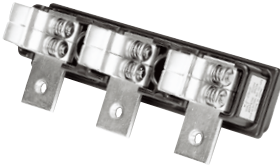
– Front connection type –



## STANDARD PRODUCTS

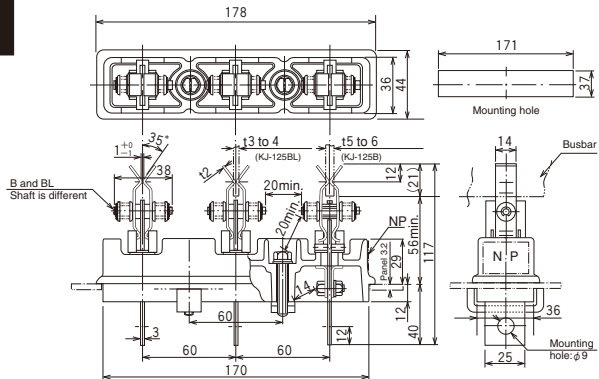
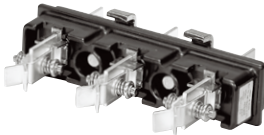
### KJ-250F (for 5 to 6mm) KJ-250FL (for 3 to 4mm)

– Front connection type –



### KJ-125B (for 5 to 6mm) KJ-125BL (for 3 to 4mm)

– Back connection type –



### KJ-250B (for 5 to 6mm) KJ-250BL (for 3 to 4mm)

– Back connection type –

