



LOAD SIDE SERIES (PRIMARY LOAD DISCONNECT DEVICE)

LJ TYPE

The LJ series have been developed by pursuing compactness. It is designed as being connected to the rear of the control center drawing unit. Thus, the unit can be downsized or given design space to place.

FEATURES

■ Compact type

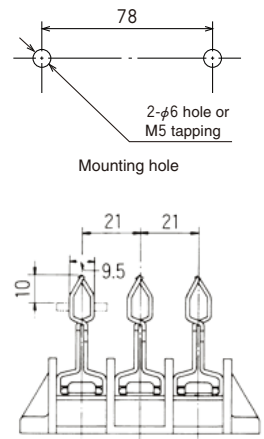
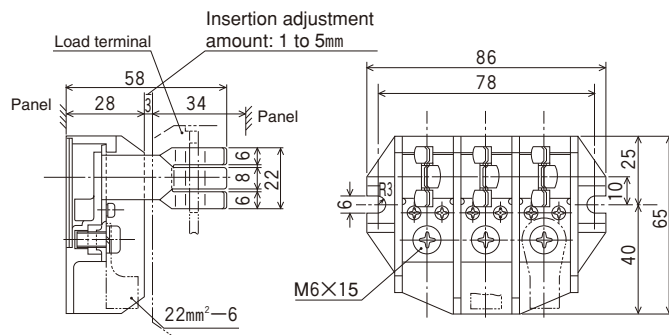
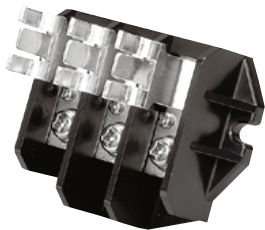
The LJ series achieves greater downsizing than the former load disconnect device, thereby contributing to space saving of the control center.

SPECIFICATIONS (RATINGS, PERFORMANCE)

| Type | LJ-80P (plug) | LJ-80T (terminal) |
|---------------------------------------|---------------|-------------------|
| Rated insulation voltage (Ui) | 600V | |
| Rated current-carrying capacity (Ith) | 100A | |
| Weight | 150g | 125g |

STANDARD PRODUCTS

LJ-80P (Plug)



LJ-80T (Terminal)

