



M22N TYPE



FEATURES

■ Applicable standards

JIS C8151 Indicators for Industrial Use, JIS C4521 Button Switches for Control Use, JIS C4520 General Rules for Control Switches, and JEM1248 Indicators

■ Small and light-weight

This is an illuminated type compact pushbutton switch with an LED indicator. It has become much lighter than a transformer or resistor type switch with an incandescent lamp.

■ The lamp can be directly illuminated with power source of 110 / 220 V

■ Free of mislighting

Mislighting is prevented by inductive voltage.

■ Easy wiring work

The Faston connection method is used to enable rapid wiring work.

■ Energy and maintenance work saving

LEDs are used for energy saving and maintenance saving.

■ Cable release

The model with a cable release B50 is useful for resetting the thermal relay in the control center or the like.

SPECIFICATIONS (RATINGS, PERFORMANCE)

Specification	Type	M22N TYPE
Rated insulation voltage (Ui)		250V
Rated operating voltage (Ith)		24V, 110V, 125V, 220V AC / DC
Rated current-carrying capacity (Ith)		18mA
Rated withstand voltage		2,500V AC / 1 min.
Lightning impulse	Between live parts (L-L) Live part to assembly mounting panel (L-N)	≈3kV / 3 times for each pole (1.2 / 50μs) ≈7kV / 3 times for each pole (1.2 / 50μs)
Operating temperature		-20 to 40°C
Storing temperature		-30 to 85°C
Heat resistance		Allowed to stand at 75°C for 24 hours
Recognizable distance		Illuminance on mounting panel at distance of 10m: 1,000 LX
Panel thickness		2 to 4mm
Shock resistance		500 m/s ² (6 directions)
Terminal connection		Faston terminal #187 series: 0.5 to 2.27 mm ²

SPECIFICATION AND PERFORMANCE OF MICROSWITCH

Contact	250V AC 15A (resistance load)
	250V AC 10A (inductive load)
Contact pushing load	3.9N
Mechanical life	10,000,000 operations or more
Electrical life	100,000 operations or more
Insulation resistance	100MΩ or more (500V DC insulation testing set)
Withstand voltage	1,000V AC / 1 min. (Between discontinuous terminals)
	2,000V AC / 1 min. (Between terminal and ground)
Wiring terminal	

HOW TO ORDER

M22N-C-110-R-11-B

Basic type

Switch type

Code	Color
C	Illuminated type pushbutton switch
P	pushbutton switch
T	Illuminated type pushbutton switch with release

Lamp voltage

Code	Voltage
24	24V AC / DC
110	100 / 110V AC / DC
125	125V AC / DC
220	200 / 220V AC / DC
(none)	P type only

Mounting ring

Code	Color
B	N1.5

Contact / release

Code	Contact / Release
01	No switch 1 release
02	No switch 2 releases
10	1C contact No release
11	1C contact 1 release
20	2C contact No release

Lens and LED color, button color

Switch type	C, T		P
Code	Lens color	LED color	Button color
R	Red	Red	Red
G	Green	Green	Green
Y	Yellow	Yellow	Yellow
O	Orange	Orange	Orange
W	Milky white	Yellow	White
C	Clear	Orange	-
B	-	-	Black

ACCESSORIES

LED unit

TS-LEDN-R

Code	Display color	LED color	Shape
R	Red	R	
G	Green	G	
Y	Yellow	Y	
O	Orange	O	
W	Milky white	Y	
C	Clear	O	

Applicable types: M22N-C

Lens

M22 lens R

Code	Display color
R	Red
G	Green
Y	Yellow
O	Orange
W	Milky white
C	Clear



Applicable types: M22N-C

Button

M22 button R

Code	Display color
R	Red
G	Green
Y	Yellow
O	Orange
W	White
B	Black



Applicable types: M22N-C

Lens remover

●XL-NQ



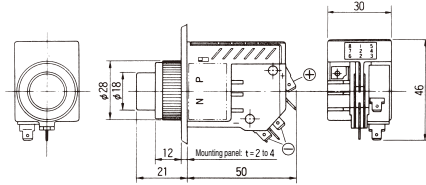
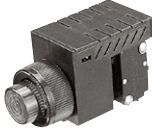


M22N TYPE

STANDARD PRODUCTS

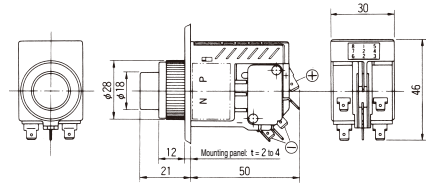
Illuminated type pushbutton with 1C contact

M22N-C- Supplied voltage - Color **-10-B**



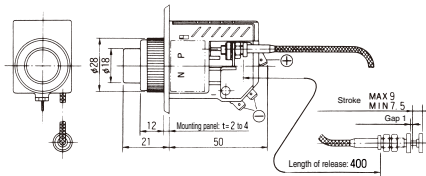
Illuminated type pushbutton with 2C contact

M22N-C- Supplied voltage - Color **-20-B**



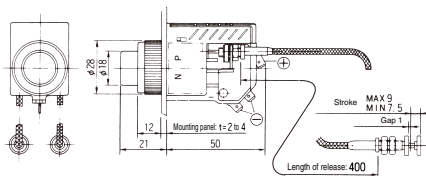
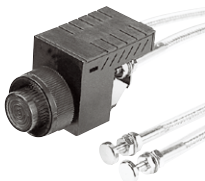
Illuminated type pushbutton with 1 release

M22N-T- Supplied voltage - Color **-01-B**



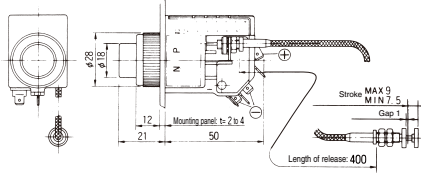
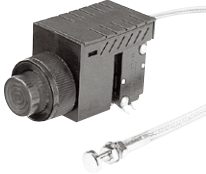
Illuminated type pushbutton with 2 releases

M22N-T- Supplied voltage - Color **-02-B**



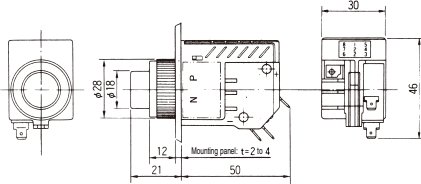
Illuminated type pushbutton with 1C contact and 1 release

M22N-T- Supplied voltage - Color - **-11-B**



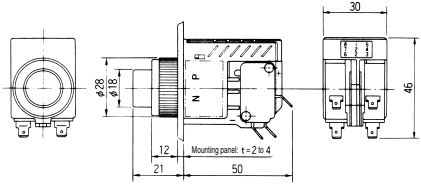
Pushbutton with 1C contact

M22N-P- Color - **-10-B**

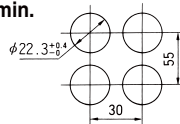


Pushbutton with 2C contact

M22N-P- Color - **-20-B**

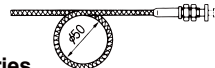


Dimensions for min. pitch mounting



Handling the release

The release is bendable, but its stroke varies. It must be used over a circle with diameter of 50 mm.



Applicable receptacle (manufactured by AMP) #187 series

Type of receptacle	Applicable wire size		Wire insulation cover size (mm)	Material and finish	Type of crimp tool	Instruction manual for crimp tool
	AWG	mm ²				
60711-1	24-20	0.2 to 0.56	1.02 to 1.78	Brass + Tin plated		
170038-2	20-16	0.5 to 1.42	2.29 to 3.30	Brass + Tin plated	720590-1	013J
170467-1	18-14	0.75 to 2.27	2.20 to 3.40	Phosphorous bronze + Nickel plated		

Compatible types; M22N and M25N