



This series has a similar basic shape to that of the KJ series, but they have been developed especially for the dual-sided control center. Accordingly, its height and width are more compact.

FEATURES

■ Compact type

The height and width have been made smaller by 15 mm and 8 mm than those of the KJ series to contribute to space saving in the control center.

F / FL type

This is the surface connection type that is available in type F for busbar thickness of 5 to 6 mm or type FL for 3 to 4 mm.

Each type is further classified into 2 models for current of 125 and 250A. Thus, a total of 4 models is available for selection.

SPECIFICATIONS (RATINGS, PERFORMANCE)

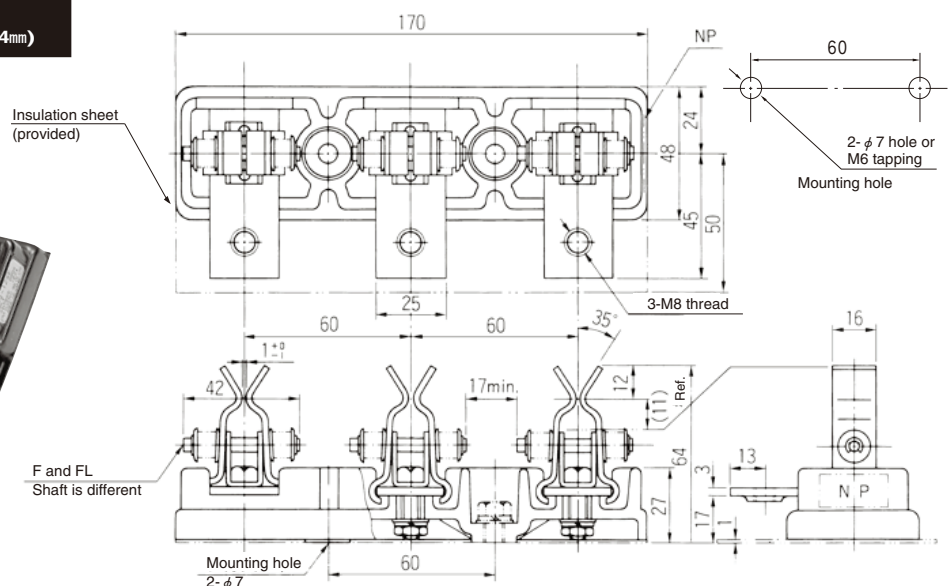
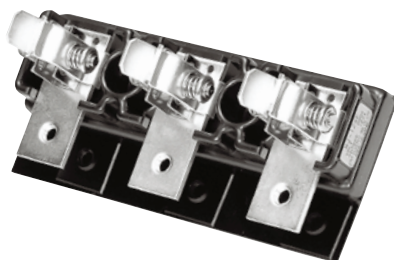
Type	NJ-125F	NJ-125FL	NJ-250F	NJ-250FL	NJ-250F6
Rated insulation voltage (Ui)	600V		600V		
Rated current-carrying capacity (Ith)	125A		250A		
Busbar thickness	5 to 6mm	3 to 4mm	5 to 6mm	3 to 4mm	5 to 6mm
Weight	415g		500g		630g

STANDARD PRODUCTS

NJ-125F (for 5 to 6mm)

NJ-125FL (for 3 to 4mm)

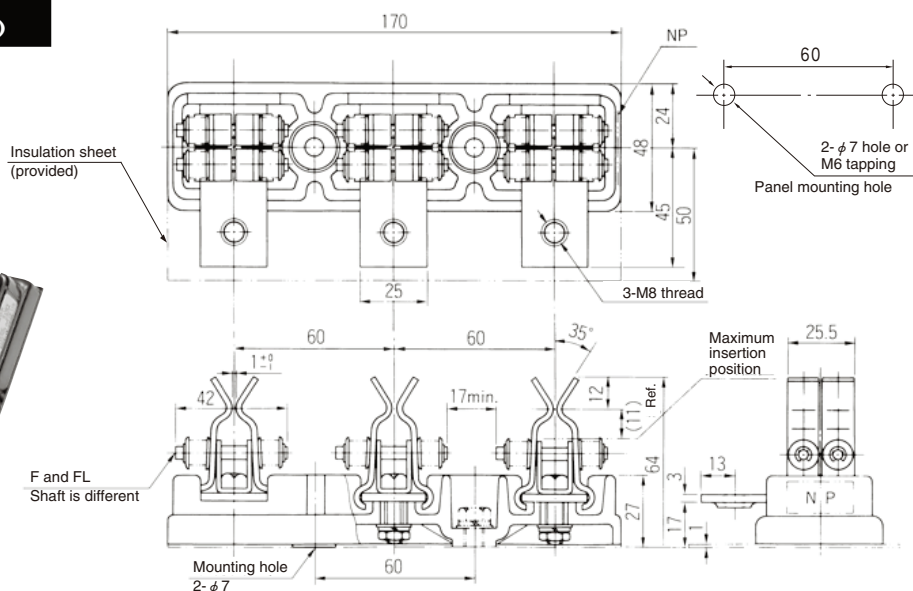
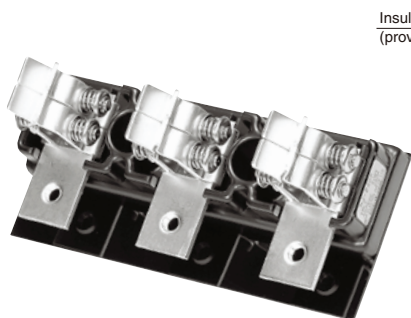
– Front connection type –



STANDARD PRODUCTS

NJ-250F (for 5 to 6mm)
NJ-250FL (for 3 to 4mm)

– Front connection type –

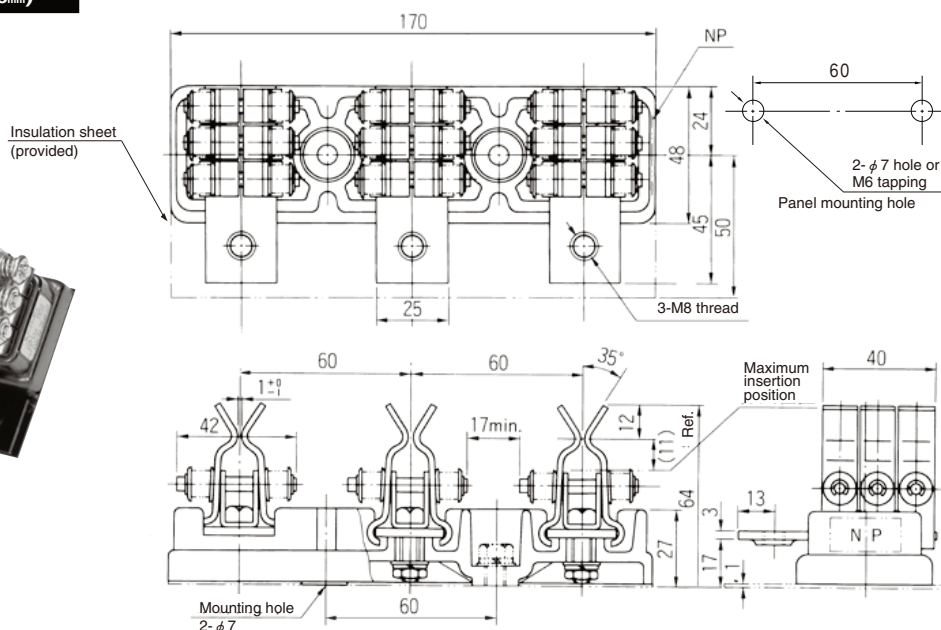
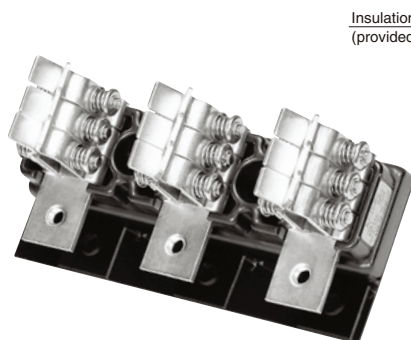


CUSTOM PRODUCTS

The model has been developed to comply with increased short-circuit current involved in larger transformers and has excellent short-circuit current characteristics (30kA in r.m.s. value and 75kA in pulse height value).

NJ-250F6 (for 5 to 6mm)

– Front connection type –



⚠ Precaution on use

- An insulation sheet is provided as standard for use to secure the insulation distance from the panel surface. Be sure to use it when mounting this device.