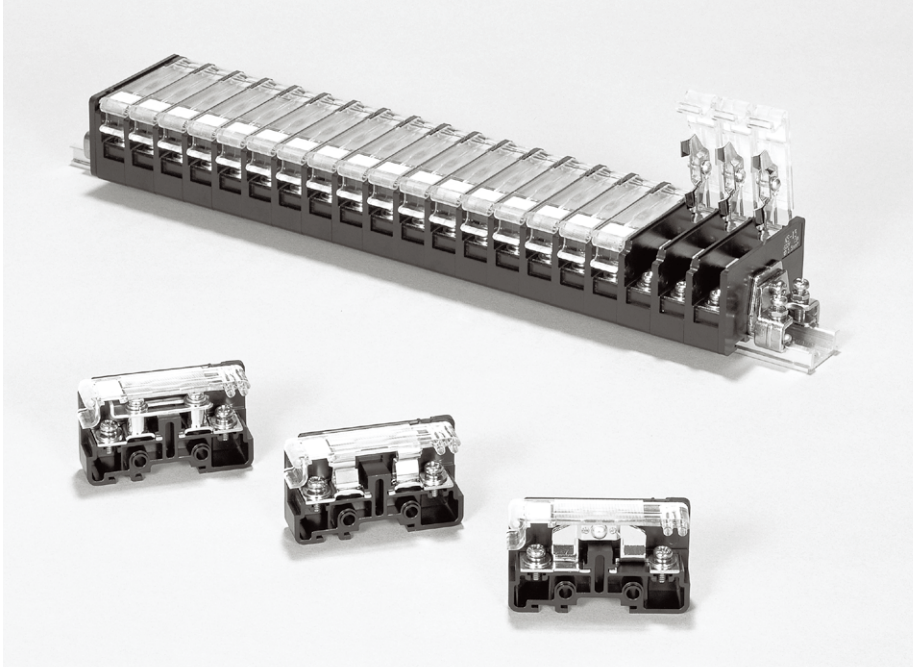




# NS TYPE



## FEATURES

- The circuit can be disconnected by pulling the lever.
- NS-15 can be assembled on the DIN rail, too. TUB rail and the shaft are also available.
- NS-F can be also used as a fuse stand.
- NS-TT enables disconnection and connection between the left and right banks with the internal short-circuit bar.
- NS-15 enables disconnection of 2 poles as a group.

## SPECIFICATIONS (RATINGS, PERFORMANCE)

Specification \ Type	NS-15	NS-F	NS-TT
Rated insulation voltage (U <sub>i</sub> )	600V		250V
Rated current-carrying capacity (I <sub>th</sub> )	15A	10A	15A
Max. wire size	5.5mm <sup>2</sup>		
Screw size	M4×10		
Withstand voltage	1 minute at 2,500V AC		
Lightning impulse	±7.2kV / 3 times for each pole (1.2 / 50 μs)		
Operating temperature	-20 to 50°C		
Storing temperature	-40 to 75°C		
Altitude	2,000 m max.		

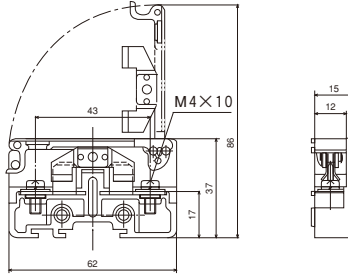
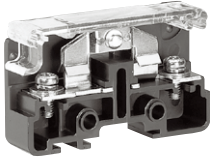
## How to order of terminal blocks

For the how to order, see A40.

### STANDARD PRODUCTS

#### NS-15 (15A)

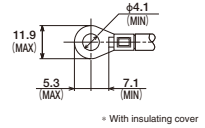
Wire size: 1.25 to 5.5 mm<sup>2</sup>



#### ● Applicable accessories

End plate	NSE-15
Standard marker strip	TUM-1
Standard rail	TUB
End clamp	TUL-W

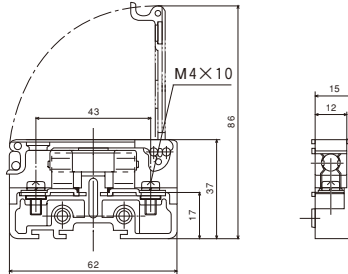
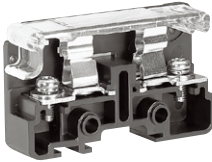
#### ● Applicable crimp terminal



With fuse holder

#### NS-F (10A)

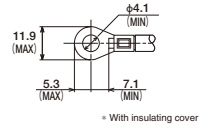
Wire size: 1.25 to 5.5 mm<sup>2</sup>



#### ● Applicable accessories

End plate	NSE-F
Standard marker strip	TUM-1
Standard rail	TUB
End clamp	TUL-W
Applicable fuse	φ 6.4 × 30

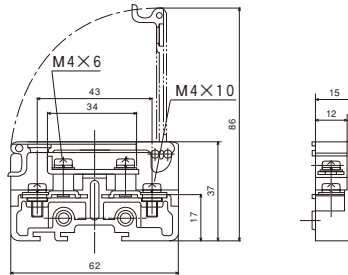
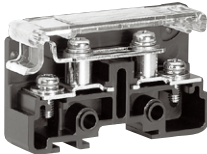
#### ● Applicable crimp terminal



With short-circuit function

#### NS-TT (15A)

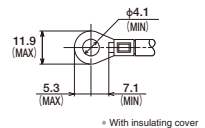
Wire size: 1.25 to 5.5 mm<sup>2</sup>



#### ● Applicable accessories

End plate	NSE-TT
Standard marker strip	TUM-1
Standard rail	TUB
End clamp	TUL-W
Jumper	NS-TTS jumper

#### ● Applicable crimp terminal

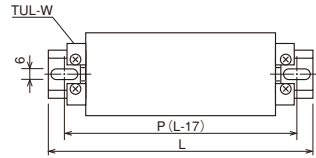




# NS TYPE

## TABLE OF ASSEMBLED DIMENSIONS

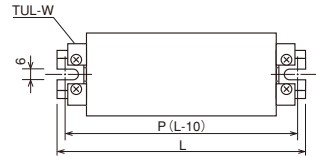
### NS type assembly on punched rail TUB-D type



NS-15,F,TT

Pole	1	2	3	4	5	6	7	8	9	10	11	12	13	14	15
P	60		80	100	120	140		160	180		200	220	240	260	
L	77		97	117	137	157		177	197		217	237	257	277	
Rail	UD-4		UD-5	UD-6	UD-7	UD-8		UD-9	UD-10		UD-11	UD-12	UD-13	UD-14	
Pole	16	17	18	19	20	21	22	23	24	25	26	27	28	29	30
P	280	290	320		340	360	380		400	420	440		460	480	500
L	297	317	337		357	377	397		417	437	457		477	497	517
Rail	UD-15	UD-16	UD-17		UD-18	UD-19	UD-20		UD-21	UD-22	UD-23		UD-24	UD-25	UD-26

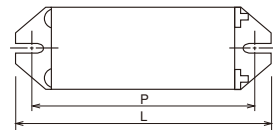
### NS type assembly on U-cut rail TUB-F type



NS-15,F,TT

Pole	1	2	3	4	5	6	7	8	9	10	11	12	13	14	15
P	55	70	85	100	115	130	145	160	175	190	205	220	235	250	265
L	65	80	95	110	125	140	155	170	185	200	215	230	245	260	275
Rail	UF-65	UF-80	UF-95	UF-110	UF-125	UF-140	UF-155	UF-170	UF-185	UF-200	UF-215	UF-230	UF-245	UF-260	UF-275
Pole	16	17	18	19	20	21	22	23	24	25	26	27	28	29	30
P	280	295	310	325	340	350	370	385	400	415	430	445	460	475	490
L	290	305	320	335	350	360	380	395	410	425	440	455	470	485	500
Rail	UF-290	UF-305	UF-320	UF-335	UF-350	UF-360	UF-380	UF-395	UF-410	UF-425	UF-440	UF-455	UF-470	UF-485	UF-500

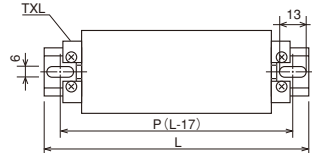
### NS type shaft NS shaft type



NS-15,F,TT

Pole	1	2	3	4	5	6	7	8	9	10	11	12
P	37	52	67	82	97	112	127	142	157	172	187	202
L	47	62	77	92	107	122	137	152	167	182	197	212

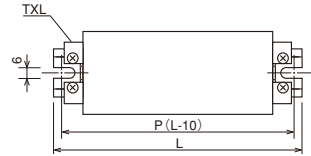
## NS type assembly on punched rail TXB-D type



NS-15,F,TT

Pole	1	2	3	4	5	6	7	8	9	10	11	12	13	14	15							
P	60		80		100		120		140		160		180		200		220		240		260	
L	77		97		117		137		157		177		197		217		237		257		277	
Rail	XD-4		XD-5		XD-6		XD-7		XD-8		XD-9		XD-10		XD-11		XD-12		XD-13		XD-14	
Pole	16	17	18	19	20	21	22	23	24	25	26	27	28	29	30							
P	280		300		320		340		360		380		400		420		440		460		480	
L	297		317		337		357		377		397		417		437		457		477		497	
Rail	XD-15		XD-16		XD-17		XD-18		XD-19		XD-20		XD-21		XD-22		XD-23		XD-24		XD-25	

## NS type assembly on U-cut rail TXB-F type



NS-15,F,TT

Pole	1	2	3	4	5	6	7	8	9	10	11	12	13	14	15
P	50	65	80	95	110	125	140	155	170	185	200	215	230	245	260
L	60	75	90	105	120	135	150	165	180	195	210	225	240	255	270
Rail	XF-60	XF-75	XF-90	XF-105	XF-120	XF-135	XF-150	XF-165	XF-180	XF-195	XF-210	XF-225	XF-240	XF-255	XF-270
Pole	16	17	18	19	20	21	22	23	24	25	26	27	28	29	30
P	275	290	305	320	335	350	365	380	395	410	425	440	455	470	485
L	285	300	315	330	345	360	375	390	405	420	435	450	465	480	495
Rail	XF-285	XF-300	XF-315	XF-330	XF-345	XF-360	XF-375	XF-390	XF-405	XF-420	XF-435	XF-450	XF-465	XF-480	XF-495

## ACCESSORIES

Please see page A75 to A78 for accessories.