



MACLIT INDICATOR



A SWITCH

B PILOT LAMP &
INDICATOR

C CONNECTING
DEVICES

D ELECTRONIC
DEVICES

E CONTROL
CENTER PARTS

FEATURES

- The Maclit indicator is operated by the electromagnetic polarity inversion method. The status is displayed by rotating the display part. The SS and MS types have built-in LED for night time use.
- SS and MS can display 3 states; "Load ON", "Load OFF", "Loss of power to the indicator".
- Materials with high weather resistance are available for outdoor equipment (SQ and MS types).
- The Maclit Indicator can operate at low power consumption. It offers various advantages including energy saving, space saving, and maintenance free.
- The MS type is provided with the residual display function. When the display power source is lost, the color displayed immediately before that loss and the other colors appear at their respective ratios of 2/3 and 1/3 on the display part. This function allows you to identify the status at a glance in which the power source has been lost (except for the MSD indicator).

SPECIFICATIONS (RATINGS, PERFORMANCE)

| Specification | Type | SS | SQ | MS |
|-------------------------------|------|--|---------------------------------|-----------------------|
| Rated insulation voltage (UI) | | 250V | | |
| Rated current | | 20mA or less | | 25mA |
| Withstand voltage | | 2,500V AC / 1 min. | | |
| Lightning impulse | | $\pm 7\text{kV}$ / 3 times for each pole (1.2 / 50 μs) | | |
| Insulation resistance | | 100M Ω or more | | |
| Shock resistance | | 50G or more | | |
| Service life | | 300,000 times or more | | 100,000 times or more |
| Location of use | | Indoor | Indoor / outdoor | |
| Operating temperature | | -20 to 50°C | | -20 to 60°C |
| Degree of protection | | Closed type | Water-proof / dust-proof (IP65) | |
| Weight | | 150g | | 250g |



MACLIT INDICATOR

HOW TO ORDER Select from the following product coding.

SS type

SS-11B

| | | | | | |
|------------|--|----|-----------------|---------------------|--------------------|
| | | | | Surface frame color | |
| | | | | B | N1.5 |
| | | | | 4/1.5 | 7.5BG4/1.5 |
| Basic type | | | | Supply voltage | |
| | | SS | Standard type | 11 | 100 / 110V AC / DC |
| | | SQ | Waterproof type | 12 | 125V AC / DC |
| | | | | 22 | 200 / 220V AC / DC |

* Color combination is only red/green.

* In case the panel is not magnetic metal material, please order "SS magnetic plate" as an accessory.

MS type

MSD-DC11B

| | | | | | |
|--|--|--|--|---------------------|--------------------|
| | | | | Surface frame color | |
| | | | | Code | Munsell color |
| | | | | B | N1.5 |
| | | | | BG | 7.5BG4/1.5 |
| | | | | Supply voltage | |
| | | | | Code | Voltage |
| | | | | 11 | 100 / 110V AC / DC |
| | | | | 22 | 200 / 220V AC / DC |
| | | | | DC11 | 100 / 110V DC |
| | | | | DC22 | 200 / 220V DC |
| | | | | AC11 | 100 / 110V AC |
| | | | | AC22 | 200 / 220V AC |

* MS-11B type for none (no code)
Please select AC or DC for the order of MSD and MSB-S.

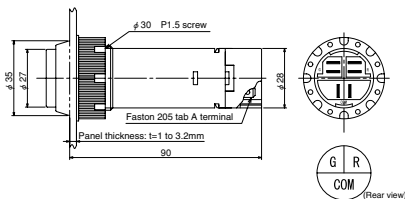
* 200 / 220V AC / DC type is a set of 100 / 110V type and a separate resistor.



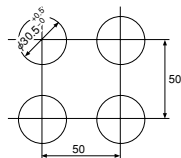
MACLIT INDICATOR

SS TYPE

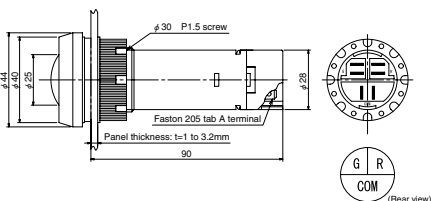
SS TYPE Standard type



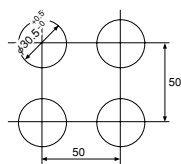
● Mounting hole size



SQ TYPE Waterproof type

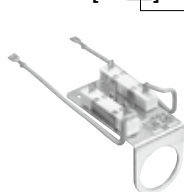


● Mounting hole size

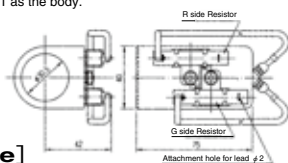


ACCESSORIES [SS · SQ TYPE]

Resistor [SS □]



DC125 for 125V DC
SS22 for 220V DC
Use SS-11 as the body.



Square type adapter

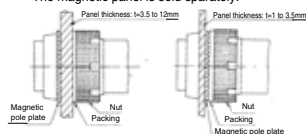
Only SS type can be mounted.



| Name | Color |
|------------------|------------|
| SS adapter 4/1.5 | 7.5BG4/1.5 |
| SS adapter B | N1.5 |

[SS magnetic plate]

It is necessary when the applicable panel is a non-magnetic body:
* The magnetic panel is sold separately.



Note: When the panel thickness is 6 to 12 mm, the nut becomes different. Specify the nut additionally.

[SR jig B]

This is tighten tool for a panel mounting nut.



[Condensation-free cover: SQ-CV-C]



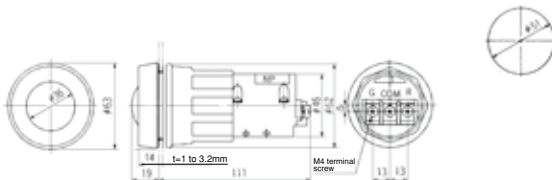


MACLIT INDICATOR

MS TYPE

MS TYPE (Common to all models)

● Mounting hole size



- The terminal protective cover (MS-CV) is provided as standard equipment.
- Engraving of terminals are G/R even if the spec is B/W.

MODELS AND CIRCUIT TYPES

| Type | Supply voltage | Surface color | Circuit type | | Operating status | Lens color |
|----------|--|------------------------------|--------------|------|--|--|
| | | | 110V | 220V | | |
| MS-11 | 110V AC / DC When used at 220V AC / DC, mount a separate resistor of 3.9k Ω , 10W. | Black • 7.5BG 4/1.5 | | | <ol style="list-style-type: none"> ① When b is turned ON, G (green) is displayed. ② When a is turned ON, R (red) is displayed. ③ When the power is turned OFF, the center color is displayed. | R·G (Red · Green) |
| | | | | | | |
| MSD-DC11 | 110V DC When used at 220V DC, mount a separate resistor of 3.9k Ω , 10W. | Black • 7.5BG 4/1.5 | | | <ol style="list-style-type: none"> ① When b is turned ON, G (green) is displayed. ② When a is turned ON, R (red) is displayed. ③ When the power is OFF, the indicator is in the previous operating mode and does not return to the center color display mode. | R·G (Red · Green) |
| | | | | | <ol style="list-style-type: none"> ① When b is turned ON, B (black) is displayed. ② When a is turned ON, W (white) is displayed. ③ When the power is OFF, the indicator is in the previous operating mode and does not return to the center color display mode. | W·B (White · Black) The LED is yellow. |
| MSD-AC11 | 110V AC When used at 220V AC, mount a separate resistor of 2.4k Ω , 10W. | Black • 7.5BG 4/1.5 | | | <ol style="list-style-type: none"> ① When b is turned ON, G (green) is displayed. ② When a is turned ON, R (red) is displayed. ③ When the power is OFF, the indicator is in the previous operating mode and does not return to the center color display mode. | R·G (Red · Green) |
| | | | | | <ol style="list-style-type: none"> ① When b is turned ON, B (black) is displayed. ② When a is turned ON, W (white) is displayed. ③ When the power is OFF, the indicator is in the previous operating mode and does not return to the center color display mode. | W·B (White · Black) The LED is yellow. |

PILOT LAMP & INDICATOR

MODELS AND CIRCUIT TYPES

| Type | Supply voltage | Surface color | Circuit type | | Operating status | Lens color |
|---------|--|------------------------------|--------------|------|---|----------------------|
| | | | 110V | 220V | | |
| MSB-SBW | 110V AC | Black • 7.5BG 4/1.5 | | | ① When a is turned ON, W (white) is displayed. ② When the power and a are turned OFF, B (black) is displayed. This is simple 2-color display without a center color. | B·W (Black·White) |
| MSB-SRG | | | | | ① When a is turned ON, R (red) is displayed. ② When the power and a are turned OFF, G (green) is displayed. This is simple 2-color display without a center color. | R·G (Red·Green) |
| MSB-SBW | 220V AC | Black • 7.5BG 4/1.5 | | | ① When a is turned ON, W (white) is displayed. ② When the power and a are turned OFF, B (black) is displayed. This is simple 2-color display without a center color. | B·W (Black·White) |
| MSB-SRG | No separate resistor is required. | 7.5BG 4/1.5 | | | ① When a is turned ON, R (red) is displayed. ② When the power and a are turned OFF, G (green) is displayed. This is simple 2-color display without a center color. | R·G (Red·Green) |
| MSB-SBW | 110V DC | Black • 7.5BG 4/1.5 | | | ① When a is turned ON, W (white) is displayed. ② When the power and a are turned OFF, B (black) is displayed. This is simple 2-color display without a center color. | B·W (Black·White) |
| MSB-SRG | When used at 220V DC, mount a separate resistor of 3.9kΩ, 10W. | | | | ① When a is turned ON, R (red) is displayed. ② When the power and a are turned OFF, G (green) is displayed. This is simple 2-color display without a center color. | R·G (Red·Green) |

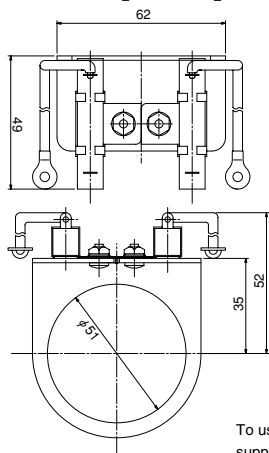


MACLIT INDICATOR

MS TYPE

ACCESSORIES

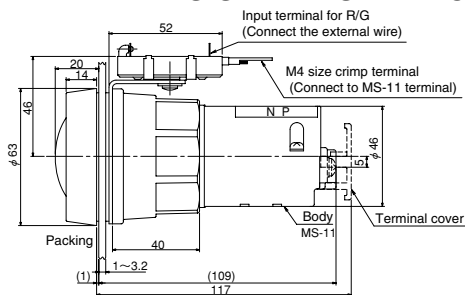
Resistor [MS-22]



To use the 100 / 110 V AC / DC type indicator with a 200 / 220 V AC or 200 / 220 V DC power supply, a separate resistor is required.

* If you order the 200 / 220 V AC / DC type indicator, a separate resistor comes with the product as a standard equipment.

SEPERATE RESISTER INSTRATION [MS-11 + Resister MS-22]



HOW TO MOUNT [MS type]

