



LOAD SIDE SERIES (PRIMARY LOAD DISCONNECT DEVICE)

SJ TYPE

FEATURES

The SJ series achieves greater downsizing than the former load disconnect device, thereby contributing to space saving of the control center.

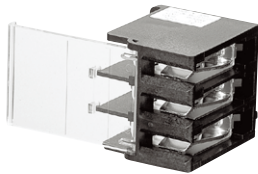
The terminals can be used at 200 or 300 A by wiring them with a jumper.

SPECIFICATIONS (RATINGS, PERFORMANCE)

Type	SJ-100P (Plug)	SJ-100C (Clip)
Rated insulation voltage (UI)	600V	
Rated current-carrying capacity (Ith)	100A	
Weight	105g	150g

STANDARD PRODUCTS

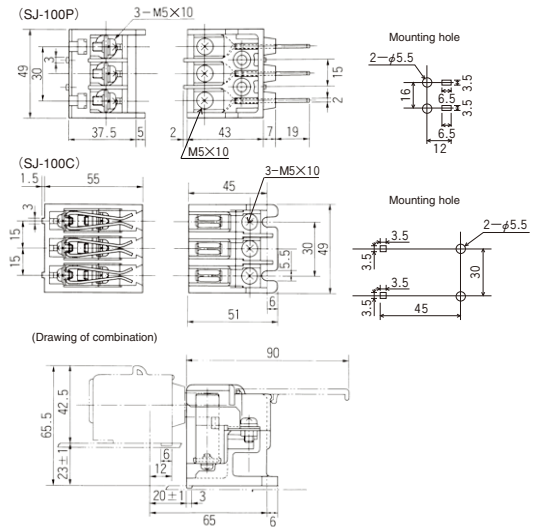
SJ-100P (Plug) SJ-100C (Clip)



SJ-100C



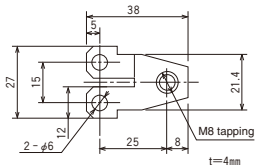
SJ-100P



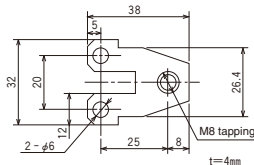
ACCESSORIES

This is an inter-polar jumper as use of 100A or more. Please contact us for how to use.

●SJ jumper 2



●SJ jumper 2S



●SJ jumper 3

