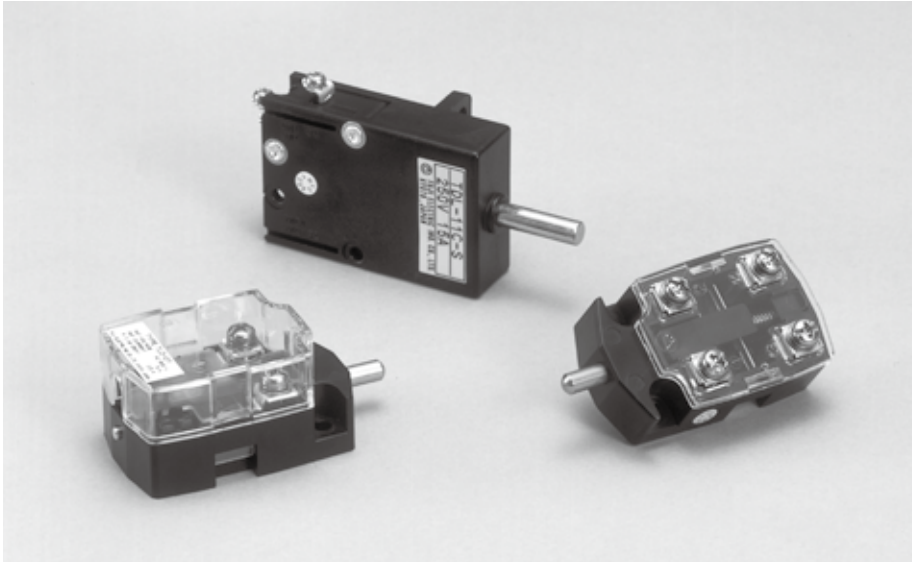




DOOR SWITCH

T TYPE



FEATURES

The TLC-W and TLD are applicable as a limit switch (TLC type) for a minute electric current circuit and the door switch (TLD type) for a fluorescent lamp circuit to get a high reliability. Also, it can be used for multipurpose.

■High reliability

Twin contacts are used to ensure the certain opening / closing action. Dust-proof design of those contacts offers high reliability.

■Simple structure and design

A transparent cover is used to facilitate checking the inside.

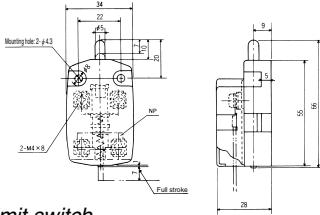
SPECIFICATIONS (RATINGS, PERFORMANCE)

Specification		Door switch		Limit switch			
		TLD TYPE		TLC-W TYPE		TDL TYPE	
Rated insulation voltage (UI)		600V				250V	
Rated current-carrying capacity (Ith)		5A		10A		16A	
Operating load		Contact 01, 10	7.0±1N (stroke: 6.5mm)	Contact 01, 10	7.0±1N (stroke: 6.5mm)	Contact 11C, 12C	5.0±1N (stroke: 20mm)
		Contact 11	7.0±1N (stroke: 6.5mm)	Contact 11	7.0±1N (stroke: 6.5mm)	Contact 11C	5.0±1N (stroke: 20mm)
Contact pressure		b contact: 2.0N, a contact: 3.5N		b contact: 2.0N, a contact: 3.5N		0.5N	
Full stroke		7mm				0mm	
Contact resistance		10mΩ or less (initial)				50mΩ or less (initial)	
Mechanical life		250,000 operations or more		10,000,000 operations or more		500,000 operations or more	
Electrical life		100,000 operations or more		1,000,000 operations or more		100,000 operations or more	
Withstand voltage	Between terminals	2,500V AC / 1 min.		2,500V AC / 1 min.		1,000V AC / 1 min.	
	Between terminal and non-live metallic part	2,500V AC / 1 min.		2,500V AC / 1 min.		1,500V AC / 1 min.	
	Between terminal and ground	2,500V AC / 1 min.		2,500V AC / 1 min.		2,500V AC / 1 min.	
Contact		110V AC, 2A } 110V DC, 1A } (inductive load)		24V DC, 6A (resistance load)		250V AC, 15A } 125V DC, 0.6A } (resistance load)	

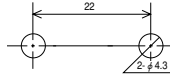
STANDARD PRODUCTS

Door switch

TLD TYPE



Mounting hole size



HOW TO ORDER

TLD-01

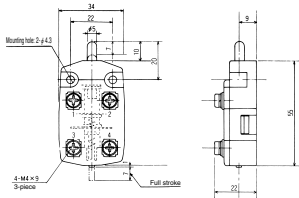
Basic type

Contact detail

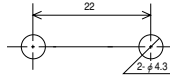
Code	Contact detail
10	1a
01	1b
11	1a1b

Limit switch

TLC-W TYPE



Mounting hole size



HOW TO ORDER

TLC-W-10

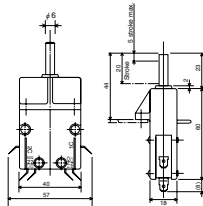
Basic type

Contact detail

Code	Contact detail
10	1a
01	1b
11	1a1b

Limit switch

TDL TYPE



Mounting hole size



HOW TO ORDER

No. of microswitches Microswitch mounting position

TDL-11C-F2

Basic type

Contact detail

Code	Description of microswitch mounting position
11C	1 microswitch for 1 NC
12C	1 microswitch for 2 NC
22C	2 microswitches

Terminal specification

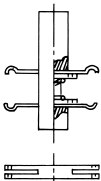
Code	Terminal specification
F2	Faston tab type

* The terminals are Faston #187 series (0.5 to 2.27 mm²).

■ Applicable receptacle (Made by AMP) #187 series

Type of receptacle	Applicable wire size		Wire insulation cover size mm	Material and finish	Type of crimp tool	Instruction manual for crimp tool
	AWG	mm ²				
60711-1	24-20	0.2 to 0.56	1.02 to 1.78	Brass + Tin plating		
170038-2	20-16	0.5 to 1.42	2.29 to 3.30	Brass + Tin plating	720590-1	013J
170467-1	18-14	0.75 to 2.27	2.20 to 3.40	Phosphorous bronze + Nickel plating		

CONTACT STRUCTURE



	Contact surface
TLD	Silver plating
TLC-W	Gold plating (30μ) silver contact

TLD type	
Terminal code	1 0 2
Contact action (stroke)	
Contact close	<input type="checkbox"/>
Contact open	<input type="checkbox"/>

TLC-W type	
Terminal code	1 0 2 3 0 4
Contact action (stroke)	
Contact close	<input type="checkbox"/>
Contact open	<input type="checkbox"/>

TDL type	
Terminal code	
Contact action (stroke)	
Contact close	<input type="checkbox"/>
Contact open	<input type="checkbox"/>