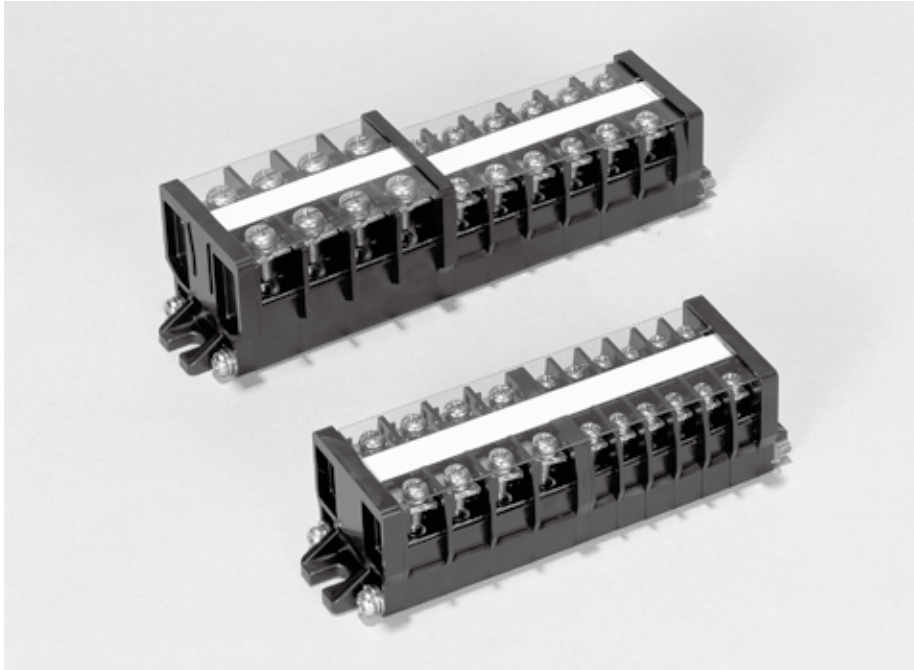




TFX TYPE



FEATURES

- Using the dedicated connector, TFX type enables quick connection of a simplified power supply for test.
- The TFX type is dedicated only shaft assembly.
- Wiring can be done efficiently by the up-screw function.

SPECIFICATIONS (RATINGS, PERFORMANCE)

Specification \ Type	TFX-2	TFX-5.5	TFX-14	TFX-22
Rated insulation voltage (Ui)	600V			
Rated current-carrying capacity (Ith)	15A	30A	60A	80A
Max. wire size	2mm ²	5.5mm ²	14mm ²	22mm ²
Screw size	M3.5×7.5	M4×8.5	M5×11	M6×14
Withstand voltage	2,500V AC / 1 min.			
Lightning impulse	±6kV / 3 times for each pole (1.2 / 50 μs)			
Ambient operating temperature	-20 to 50°C			
Storing temperature	-40 to 85°C			
Altitude	2,000 m or less			

CONNECTING DEVICES

How to order of terminal blocks

TFX-2 × 12

Type name No. of poles

* Combination of several types is allowed depending on model.

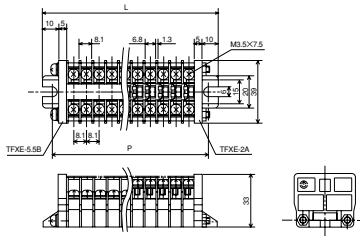
The TFX type shall be sold as a shaft-assembly only. For order of the TFX type, specify the combination in the following format.

STANDARD PRODUCTS

Please see page C85 for L (max. length) and P (mounting pitch) dimensions.

TFX-2 (15A)

Applicable wire size: 0.75 to 2.0 mm²

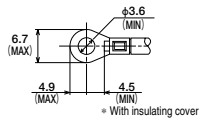


● Applicable accessories

Standard marker strip **TUM-2**

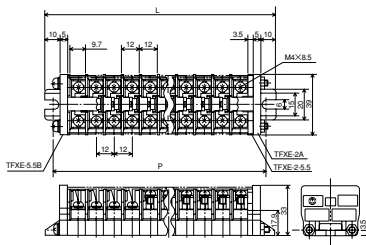
Cover **TFXC-2□P**

● Applicable crimp terminal



TFX-5.5 (30A)

Applicable wire size: 2.0 to 5.5 mm²

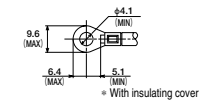


● Applicable accessories

Standard marker strip **TUM-2**

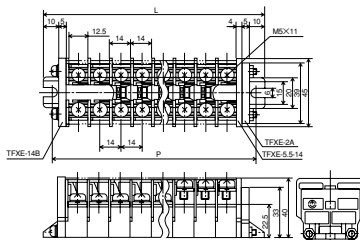
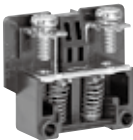
Cover **TFXC-5.5□P**

● Applicable crimp terminal



TFX-14 (60A)

Applicable wire size: 5.5 to 14 mm²

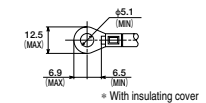


● Applicable accessories

Standard marker strip **TUM-2**

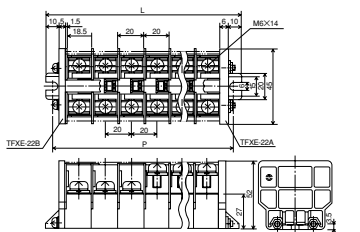
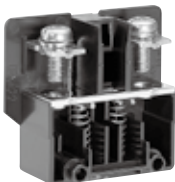
Cover **TFXC-14□P**

● Applicable crimp terminal



TFX-22 (80A)

Applicable wire size: 8.0 to 22 mm²

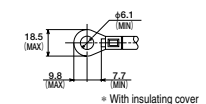


● Applicable accessories

Standard marker strip **TUM-2**

Cover **TFXC-22□P**

● Applicable crimp terminal



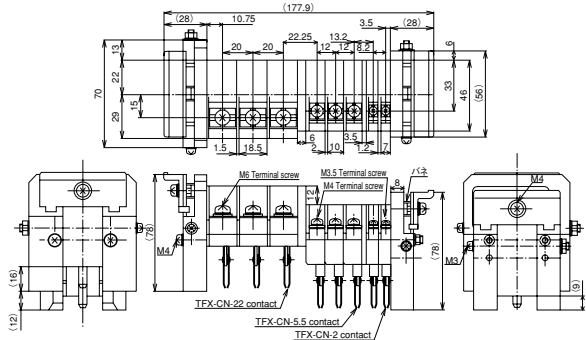
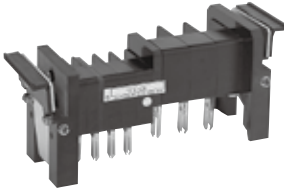


TFX TYPE

TFX DEDICATED CONNECTOR

By using a dedicated connector, it's enable to simply connect to power supply of up to 60 A, which can be greatly reduce the testing process.

TFX-CN□



How to order of terminal blocks

* The TFX type shall be ordered as an assembly.

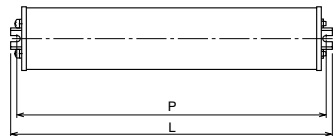
1 Single item assembly

TFX-CN2 × **3** (In case of connector for TFX-2x3)
Type name No. of poles

2 Mix item assembly

TFX-CN2 × **3** , **TFX-CN5.5** × **3** (In case of connector for TFX-2x3, 5.5x3)
Type name No. of poles Type name No. of poles

TABLE OF ASSEMBLED DIMENSIONS



TFX type shaft

Type / Pole	TFX-2		TFX-5.5		TFX-14		TFX-22		Type / Pole
	L	P	L	P	L	P	L	P	
2	46	34	57.5	45.5	62	50	71	59	2
3	54	42	69.5	57.5	76	64	91	79	3
4	62	50	81.5	69.5	90	78	111	99	4
5	70	58	93.5	81.5	104	92	131	119	5
6	78	66	105.5	93.5	118	106	151	139	6
7	86	74	117.5	105.5	132	120	171	159	7
8	94	82	129.5	117.5	146	134	191	179	8
9	102	90	141.5	129.5	160	148	211	199	9
10	111	99	153.5	141.5	174	162	231	219	10
11	119	107	165.5	153.5	188	176	251	239	11
12	127	115	177.5	165.5	202	190	271	259	12

●UNIT TYPE

UP-SCREW TYPE TERMINAL BLOCK



TFX TYPE

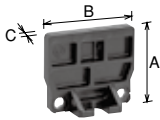
ACCESSORIES

LIST OF APPLICABLE ACCESSORIES

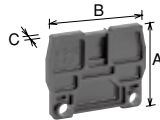
Type	Accessory	End plate	Marker strip		Marker strip case	Marker sheet	Aluminum rail		End clamp		Cover	Jumper
			Applicable	Semi-applicable			Applicable	Semi-applicable	Applicable	Semi-applicable		
TFX TYPE	TFX-2	TFXE-2A, TFXE-5.5B	TUM-2	_____	TUM marker strip case 10	_____	_____	_____	_____	_____	TFXC-2□P	_____
	TFX-5.5	TFXE-2A, TFXE-5.5, TFXE-5.5B		_____		_____	_____	_____	_____	TFXC-5.5□P	SB12CB	
	TFX-14	TFXE-2A, TFXE-5.5-14, TFXE-14B		_____		_____	_____	_____	_____	TFXC-14□P	_____	
	TFX-22	TFXE-22A, TFXE-22B		_____		_____	_____	_____	_____	TFXC-22□P	_____	

End plate

●TFXE-□A



●TFXE-□B

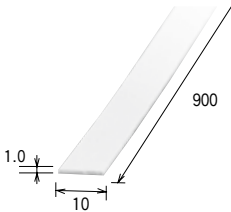


Type name	TFXE-2A	TFXE-5.5B	TFXE-14B	TFXE-22A	TFXE-22B	TFXE-2.5.5	TFXE-5.5-14
A	33	33	40	52	52	31	40
B	39	39	45	58	58	39	45
C	5	5	5	6	5	3.5	4

* It's a spacer used when assembling TFX-5.5 and TFX-14.
* Only assembly is available.

Marker strip

(Order unit: 100)



Marker strip case

(Order unit: 100)

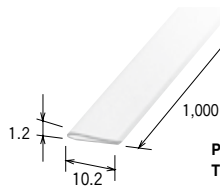


Plate thickness: t = 0.3 mm
Transparent case

Cover

(Order unit: 20)

●TFXC Cover

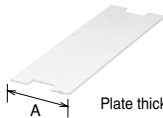


Plate thickness: t = 0.5 mm
(If the number of poles increases, the plate thickness will change.)

Type name	TFXC-2	TFXC-5.5	TFXC-14	TFXC-22
A	35	35	42	55

* Specify an intended number of poles.
EX) TFXC-2 2P

Jumper

With insulating coat	2 poles	SB12CB-2
	12 poles	SB12CB-12
Dimensions		

A SWITCH

B PILOT LAMP & INDICATOR

C CONNECTING DEVICES

D ELECTRONIC DEVICES

E CONTROL CENTER PARTS