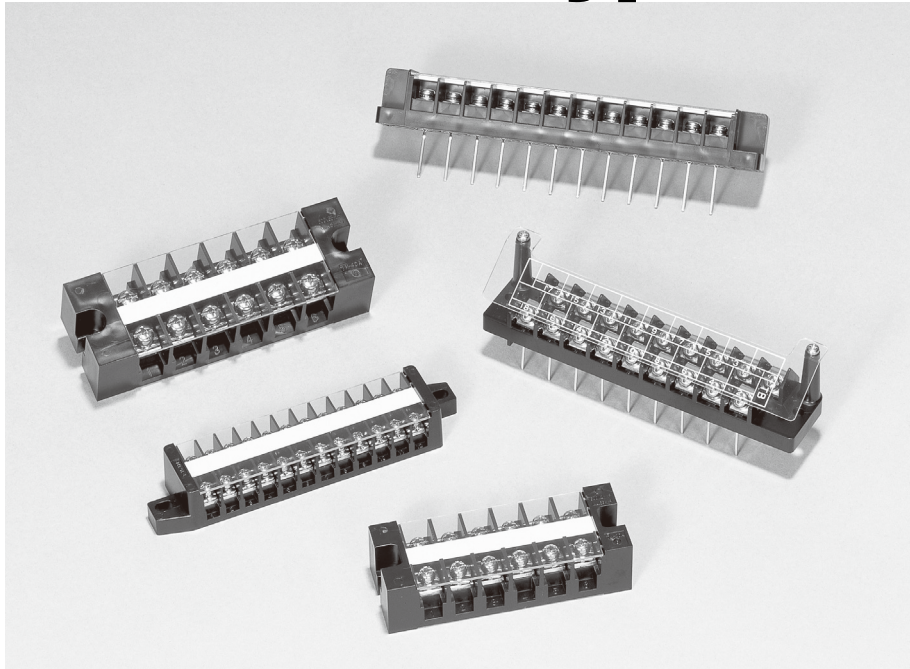


●Block type



BLOCK TYPE TERMINAL BLOCK

TM - T□ Type



FEATURES

- The block type terminal block is easy to use for operation circuits and signal circuits with a fixed number of wires. Screw terminals and wrapping terminals are available.
- The terminal block is robust and ensures safe handling. High-performance engineering plastic is used for the insulation material, ensuring excellent electrical and mechanical durability without breakdown.

SPECIFICATIONS (RATINGS, PERFORMANCE)

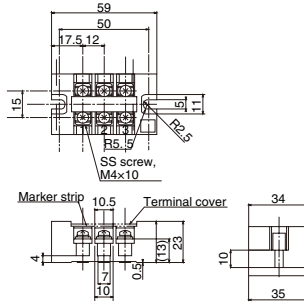
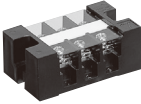
Type	TM-20A	TM-40A	T-15	TL-12	TY-18
Rated insulation voltage (Ui)	600V AC / DC			250V AC / DC	
Rated current-carrying capacity (Ith)	25A	40A	15A	10A	3A
Max. wire size	5.5mm ²	8mm ²	2mm ²	5.5mm ²	
Screw size	M4×10	M5×10	M3.5×8	M4×9	
Withstand voltage	3,000 V AC for one minute		3,000 V AC for one minute	2,500 V AC for one minute	
Lightning impulse	±7,000 V for each pole, three times (1.2 / 50 μs)			±6,000 V for each pole, three times (1.2 / 50 μs)	
Operating temperature	-25 to 50°C				
Storing temperature	-40 to 75°C				
Altitude	2,000 m max.				

STANDARD PRODUCTS

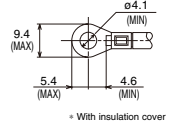
For details of accessories, see P. 113 and subsequent pages.

TM-20A-3P (25A)

Wire size: 2.0 to 5.5 mm²

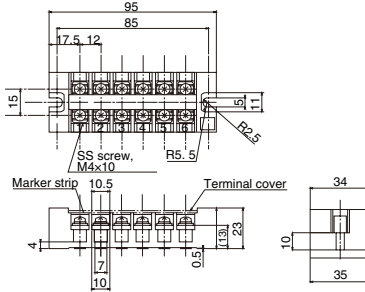
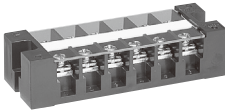


● Applicable crimp terminal

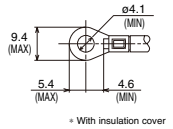


TM-20A-6P (25A)

Wire size: 2.0 to 5.5 mm²

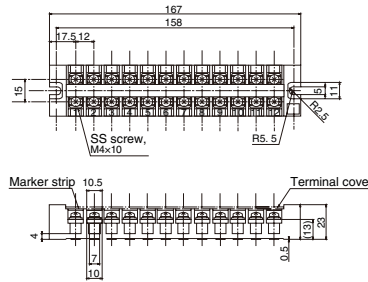
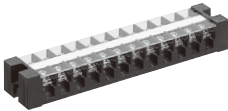


● Applicable crimp terminal

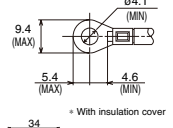


TM-20A-12P (25A)

Wire size: 2.0 to 5.5 mm²

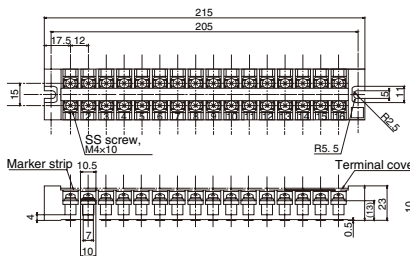
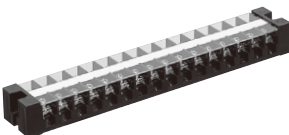


● Applicable crimp terminal

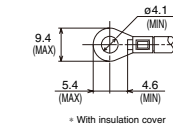


TM-20A-16P (25A)

Wire size: 2.0 to 5.5 mm²



● Applicable crimp terminal



● Block type

BLOCK TYPE TERMINAL BLOCK



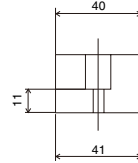
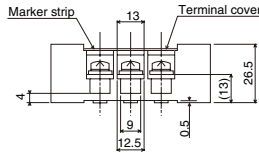
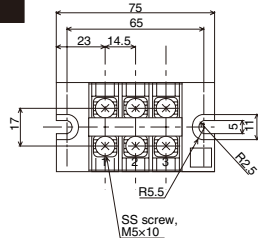
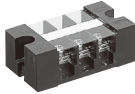
TM - T□ Type

STANDARD PRODUCTS

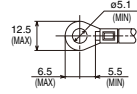
For details of accessories, see P. 113 and subsequent pages.

TM-40A-3P (40A)

Wire size: 5.5 to 8.0 mm²



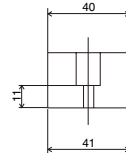
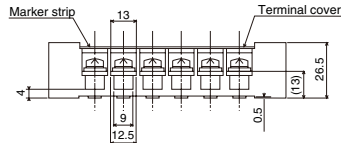
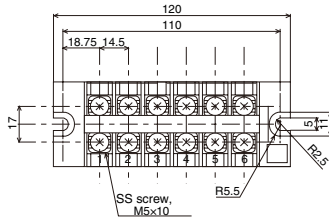
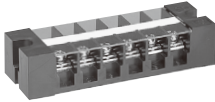
● Applicable crimp terminal



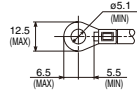
● With insulation cover

TM-40A-6P (40A)

Wire size: 5.5 to 8.0 mm²



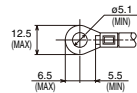
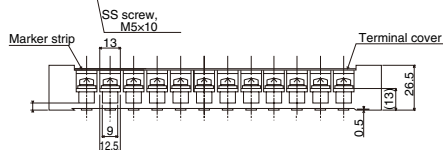
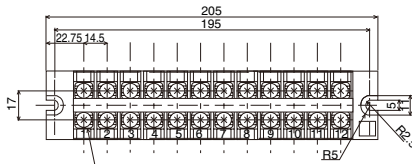
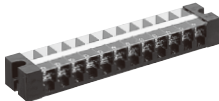
● Applicable crimp terminal



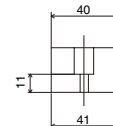
● With insulation cover

TM-40A-12P (40A)

Wire size: 5.5 to 8.0 mm²





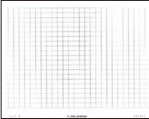
● With insulation cover



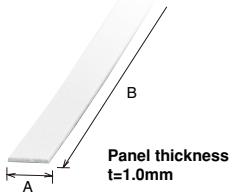


ACCESSORIES

LIST OF APPLICABLE ACCESSORIES

Accessory		End plate	Marker strip		Marker strip case	Marker sheet
			Applicable	Semi-applicable		
Type	TM-20A	—	TM20A marker strip □P	—	TUM marker strip case 8	TU-30S, 60 marker sheet
	TM-40A	—	TM40A marker strip □P	—		TU-40A marker sheet
T TYPE	T-15	—	T-15 marker strip □P	—	TUM marker strip case 8	TU-15 marker sheet
T □ TYPE	TL-12	—	TL-12 marker strip	—	TUM marker strip case 10	TU-20 marker sheet
	TY-18	—	—	—	—	—

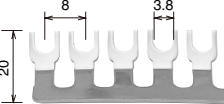
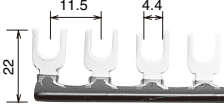
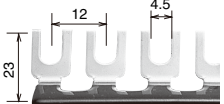
Marker strip







Type name	TM20A marker strip 3P	TM20A marker strip 6P	TM20A marker strip 12P	TM20A marker strip 16P	TM40A marker strip 3P
A	7.9	7.9	7.9	7.9	7.9
B	39.7	75	147	196	50
Type name	TM40A marker strip 6P	TM40A marker strip 12P	T-15 marker strip 12P	T-15 marker strip 20P	TL-12 marker strip
A	7.9	7.9	7.9	7.9	10
B	93	179.5	103.5	167.5	147

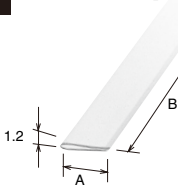
Jumper

(Order unit: 10)

Without insulation coat	2 poles	SB8-2	SB11.5-2	SB12-2
	12 poles	SB8-12	SB11.5-12	SB12-12
With insulation coat	2 poles	SB8CB-2	SB11.5CB-2	SB12CB-2
	12 poles	SB8CB-12	SB11.5CB-12	SB12CB-12
Dimensions				

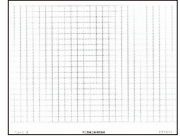
Aluminum rail		End clamp		Cover	Jumper	Accessory	
						Type	
Applicable	Semi-applicable	Applicable	Semi-applicable				
—	—	—	—	TM20A cover □P	SB12, SB12CB	TM-20A	TM TYPE
—	—	—	—	TM40A cover □P	—	TM-40A	
—	—	—	—	T-15 cover □P	SB8, SB8CB	T-15	T TYPE
—	—	—	—	TL-12 cover	SB11.5, SB11.5CB	TL-12	□ TYPE
—	—	—	—	TY-18 cover	SB12, SB12CB	TY-18	

Marker strip case



Type name	TUM marker strip case 8	TUM marker strip case 10
A	8	10.2
B	1,000	1,000

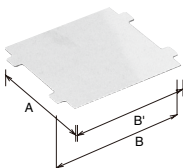
Marker sheet



Type name	TU-15 marker sheet	TU-20 marker sheet	TU-30S,60 marker sheet	TM-40A marker sheet
Pitch	8	11.5	12	14.5

Cover

TM TYPE

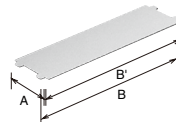


() : Dimension B'

Type name	TM20A cover 3P	TM20A cover 6P	TM20A cover 12P	TM20A cover 16P
A	34	34	34	34
B	41 (36)	82 (72)	154.3 (144.3)	201.5 (191.5)

Type name	TM40A cover 3P	TM40A cover 6P	TM40A cover 12P
A	40	40	40
B	48 (44)	93 (87)	179.7 (173.7)

T TYPE

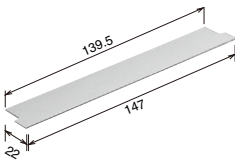


() : Dimension B'

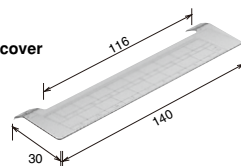
Type name	T-15 cover 12P	T-15 cover 20P
A	28	28
B	103 (97)	167 (161)

□ TYPE

● TL-12cover

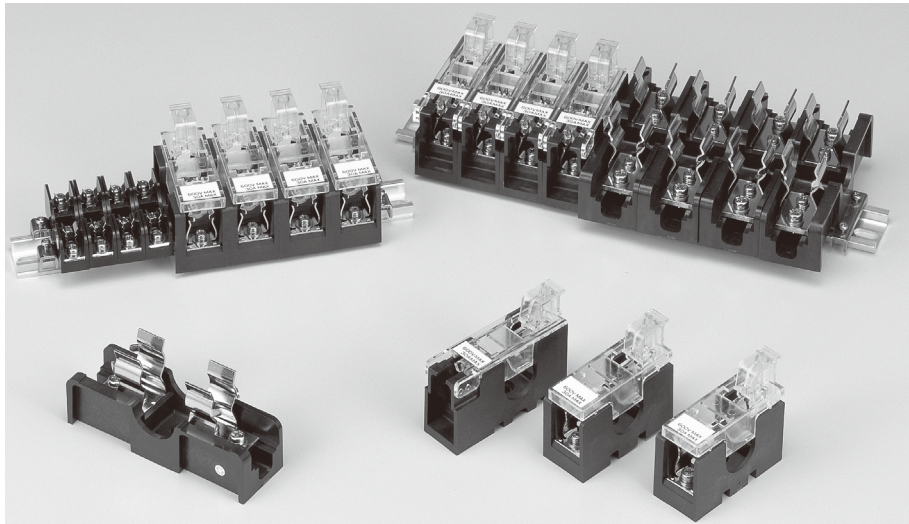


● TY-18cover





FUSE HOLDER



FEATURES

- **Conformed to JIS C 8314, C8352, and JEM1103.**

Both air clearance and creepage distance for insulation in JEM standard 1103 (1976) "insulation distance for controllers" are conformed to rated insulation voltage of 600 V AC / DC in the bear crimp condition (250 V AC or DC for F-10 type).

- **Excellent heat resistance**

For the insulation base of 30 A or more, high-performance engineering plastic is used. It assures high heat resistance and keeps normal condition even if it is left in a furnace of 150°C for 5 hours. Sufficient safety is assured against a temperature increase due to overcurrent.

- **Light weight and high rigidity**

Sufficient strength is retained against rough handling to assure comfortable use. This fuse holder is highly resistant against shock and vibrations to hold the fuse in place.

SPECIFICATIONS (RATINGS, PERFORMANCE)

Type	F-10	PF-34 PF-34S	PF-35 PF-35S	DF-34	DF-35	NF-61 NF-61S	NF-62 NF-62S
Rated insulation voltage (Ui)	250V AC / DC	600V AC / DC					
Rated current-carrying capacity (Ith)	10A	30A				60A	
Max. wire size	5.5mm ²	14mm ²				22mm ²	
Screw size	M4×8	M4×10	M5×12	M4×10	M5×12	M5×10	
Applicable fuse	10A (ø6.4×30mm)	30A (ø15×50mm)				30A (ø20×57mm)	60A (ø20×75mm)
Withstand voltage	1 minute at 2,500V AC	1 minute at 3,000V AC					
Lightning impulse	±6,000V / 3 times for each pole (1.2 / 50µs)	±9,000V / 3 times for each pole (1.2 / 50 µs)				±10,000V / 3 times for each pole (1.2 / 50 µs)	
Operating temperature	-20 to 50°C		-40 to 70°C				
Temperature increase (at rated current)			35K				45K
Heat resistant performance	70°C 5H OK		150°C 5H OK				
Insulation resistance (1,000 MV DC)	1,000 MΩ min.						