



RECTIFIER

TVTA TYPE, TVTB TYPE



FEATURES

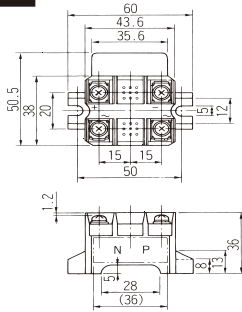
- A silicon diode rectifying circuit is incorporated.
- A built in varistor limits the surge current and provides a protection against fluctuation of the load current.
- TVTA-3 and TVTB-3 have built-in capacitors so that rectification does not cause zero voltage.
- PBT plastic is used as the body, which enhances self-extinguishing and anti-flammability performance (UL94-V0).

SPECIFICATIONS (RATINGS, PERFORMANCE)

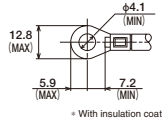
Type	TVTA-3	TVTB-3
Specification	TVTA-3	TVTB-3
Rated insulation voltage (Ui)	600V	
Rated current-carrying capacity (Ith)	3A	2A
Max. wire size	5.5mm ²	
Screw size	M4x9	
Withstand voltage	1 minute at 2,500V AC	
Lightning impulse	±7kV / 3 times for each pole (1.2 / 50 μs)	
Operating temperature	-20 to 60°C	
Storing temperature	-40 to 85°C	
Altitude	2,000 m max.	

STANDARD PRODUCTS

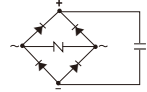
TVTA-3 (4A)



●Applicable crimp terminal



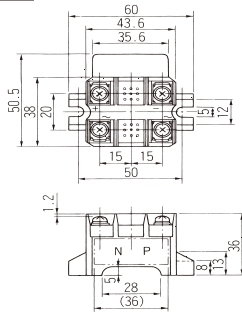
●Circuit diagram



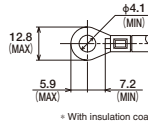
●Installed components

- Diode
3A inverse voltage 1,000V
- Varistor
390V / 0.6W
- Capacitor
0.047 μ F / 400VDC

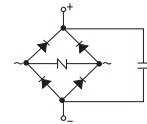
TVTB-3 (2A)



●Applicable crimp terminal



●Circuit diagram

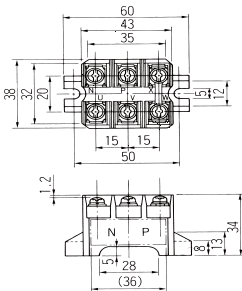


●Installed components

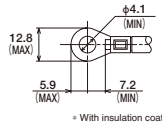
- Diode
3A inverse voltage 1,000V
- Varistor
390V / 0.6W
- Capacitor
0.068 μ F / 630VDC

CUSTOM PRODUCTS

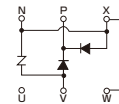
TVM-3 (3A)



●Applicable crimp terminal



●Circuit diagram



●Installed components

- Diode
3A inverse voltage 1,000V
- Varistor
390V / 1W