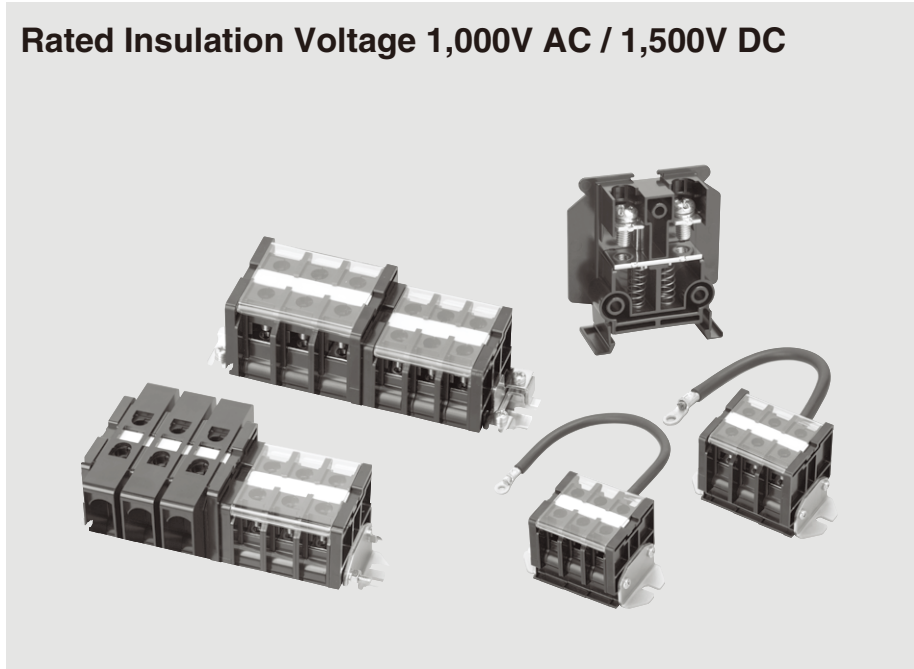




TXH TYPE

Rated Insulation Voltage 1,000V AC / 1,500V DC



FEATURES

High insulation voltage

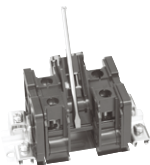
Rated insulation voltage is 1,000V AC / 1,500V DC, and power-frequency withstand voltage is 5,000V AC / 1 min. (IEC60947)

High performance resin material

High performance modified-PPE is used as modeling resin material. Flame resistance is UL94 V-0 grade, comparative tracking index (CTI) is more than 600.

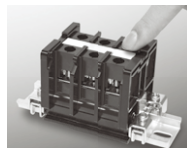
Easy mount and dismount

Terminal block can be mounted and dismounted from the rail unit by unit without removing end clamp.



Finger protection

Finger protection structure on terminal-portion prevents touching live portion even if terminal cover is not attached.



Wire cover

Insulation distance can be kept without insulation cap by attaching a wire cover.



- * Please make insulation protection applicable to equipment and voltage.
- * Wire cover (TXH-□-CV) is not included in terminal block order.

SPECIFICATIONS (RATINGS, PERFORMANCE, STANDARD OPERATING CONDITION)

Applicable standard: IEC 60947-7-7-1(2009)

Item		TXH-5.5	TXH-14
Rating	Rated Insulation Voltage (Ui)	1,000V AC / 1,500V DC	
	Rated Current-Carrying Capacity (Ith)	30A	60A
	Applicable Wire Size	2.0 to 5.5mm ²	5.5 to 14mm ²
	Screw Size	M4×8.5	M5×11
Performance	Power-Frequency Withstand Voltage	5,000V AC / 1 min.	
	Impulse Withstand Voltage	±14.8kV / 3 times for each pole	
	Short-Time Withstand Current	120A / 1 min. per 1 mm ²	
Standard operating condition	Ambient Temperature	-25 to 50°C	
	Relative Humidity	45 to 85°C	
	Altitude	2,000 m max.	

How to order

TXH-5.5-R×10-XF

① ② ③ ④

NO.	Item	Code	Description	Remark	
①	Basic type	TXH-5.5	Max. applicable wire size(mm ²)	5.5	—
		TXH-14		14	—
②	Color	(blank)	Black		—
		R	Red		Special color
③	Pole No.	1 to max.	TXH-5.5 (TXB, TKB type)	1 to 35(61)	Max. pole No. is less than 600 mm of rail length. (In case over 600 mm, max. pole No. is less than 1,000 mm of reinforced rail (TKB-D).)
			TXH-14 (TXB, TKB type)	1 to 29(51)	
			TXH-5.5 (Shaft assembly)	1 to 21	
			TXH-14 (Shaft assembly)	1 to 19	
④	Rail	XD	TXB-D rail type	Punched rail	(DIN rail)
		XF	TXB-F rail type	U-cut rail	(DIN rail)
		KD	TKB-D rail type	Reinforced punched rail	(DIN rail)
		S	Shaft assembly	—	—

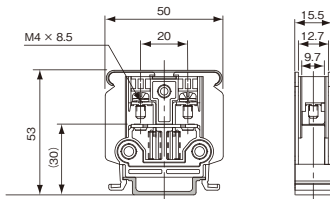


TXH TYPE

STANDARD PRODUCTS

TXH-5.5

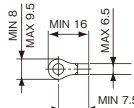
Applicable wire size: 2 to 5.5 mm²



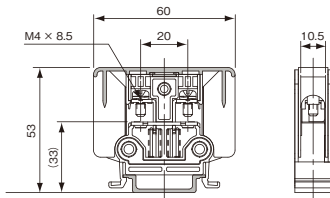
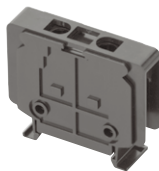
●Applicable accessories

End plate	TXHE-5.5
Standard marker strip	TUM-2
Standard rail	TXB
End clamp	TXL
Cover	TUC-8

●Applicable crimp terminal

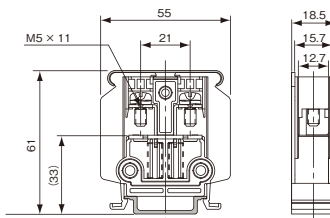
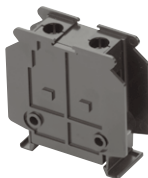


●With wire cover (TXH-CV)



TXH-14

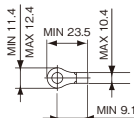
Applicable wire size: 5.5 to 14 mm²



●Applicable accessories

End plate	TXHE-14
Standard marker strip	TUM-2
Standard rail	TXB
End clamp	TXL
Cover	TUC-8

●Applicable crimp terminal



●With wire cover (TXH-CV)

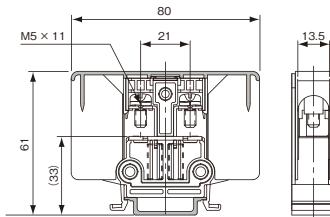
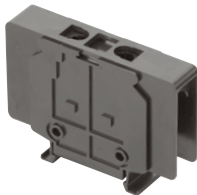
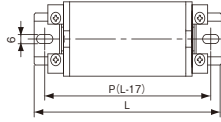
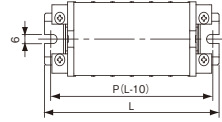


TABLE OF ASSEMBLED DIMENSIONS

Punched rail assembly



U-cut rail assembly



TXB-D or TKB-D type

Pole	P	L	Rail designation
1	60	77	XD-KD-4
2	60	77	XD-KD-4
3	80	97	XD-KD-5
4	100	117	XD-KD-6
5	120	137	XD-KD-7
6	140	157	XD-KD-8
7	140	157	XD-KD-8
8	160	177	XD-KD-9
9	180	197	XD-KD-10
10	200	217	XD-KD-11
11	200	217	XD-KD-11
12	220	237	XD-KD-12
13	240	257	XD-KD-13
14	260	277	XD-KD-14
15	280	297	XD-KD-15
16	280	297	XD-KD-15
17	300	317	XD-KD-16
18	320	337	XD-KD-17
19	340	357	XD-KD-18
20	340	357	XD-KD-18
21	360	377	XD-KD-19
22	380	397	XD-KD-20
23	400	417	XD-KD-21
24	400	417	XD-KD-21
25	420	437	XD-KD-22
26	440	457	XD-KD-23
27	460	477	XD-KD-24
28	480	497	XD-KD-25
29	480	497	XD-KD-25
30	500	517	XD-KD-26
31	520	537	XD-KD-27
32	540	557	XD-KD-28
33	540	557	XD-KD-28
34	560	577	XD-KD-29
35	580	597	XD-KD-30
36	600	617	KD-31
37	620	637	KD-32
38	620	637	KD-32
39	640	657	KD-33
40	660	677	KD-34
41	680	697	KD-35
42	680	697	KD-35
43	700	717	KD-36
44	720	737	KD-37
45	740	757	KD-38
46	760	777	KD-39
47	760	777	KD-39
48	780	797	KD-40
49	800	817	KD-41
50	820	837	KD-42
51	820	837	KD-42
52	840	857	KD-43
53	860	877	KD-44
54	880	897	KD-45
55	900	917	KD-46
56	900	917	KD-46
57	920	937	KD-47
58	940	957	KD-48
59	960	977	KD-49
60	960	977	KD-49
61	980	997	KD-50

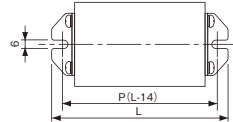
Pole	P	L	Rail designation
1	60	77	XD-KD-4
2	80	97	XD-KD-5
3	100	117	XD-KD-6
4	120	137	XD-KD-7
5	140	157	XD-KD-8
6	140	157	XD-KD-8
7	160	177	XD-KD-9
8	180	197	XD-KD-10
9	200	217	XD-KD-11
10	220	237	XD-KD-12
11	240	257	XD-KD-13
12	260	277	XD-KD-14
13	280	297	XD-KD-15
14	300	317	XD-KD-16
15	320	337	XD-KD-17
16	340	357	XD-KD-18
17	360	377	XD-KD-19
18	380	397	XD-KD-20
19	380	397	XD-KD-20
20	400	417	XD-KD-21
21	420	437	XD-KD-22
22	440	457	XD-KD-23
23	460	477	XD-KD-24
24	480	497	XD-KD-25
25	500	517	XD-KD-26
26	520	537	XD-KD-27
27	540	557	XD-KD-28
28	560	577	XD-KD-29
29	580	597	XD-KD-30
30	600	617	KD-31
31	620	637	KD-32
32	620	637	KD-32
33	640	657	KD-33
34	660	677	KD-34
35	680	697	KD-35
36	700	717	KD-36
37	720	737	KD-37
38	740	757	KD-38
39	760	777	KD-39
40	780	797	KD-40
41	800	817	KD-41
42	820	837	KD-42
43	840	857	KD-43
44	860	877	KD-44
45	880	897	KD-45
46	880	897	KD-45
47	900	917	KD-46
48	920	937	KD-47
49	940	957	KD-48
50	960	977	KD-49
51	980	997	KD-50

TXB-F type

Pole	P	L	Rail designation
1	55	65	XF-65
2	70	80	XF-80
3	85	95	XF-95
4	100	110	XF-110
5	115	125	XF-125
6	130	140	XF-140
7	145	155	XF-155
8	160	170	XF-170
9	175	185	XF-185
10	190	200	XF-200
11	210	220	XF-220
12	225	235	XF-235
13	240	250	XF-250
14	255	265	XF-265
15	270	280	XF-280
16	285	295	XF-295
17	300	310	XF-310
18	315	325	XF-325
19	330	340	XF-340
20	345	355	XF-355
21	365	375	XF-375
22	380	390	XF-390
23	395	405	XF-405
24	410	420	XF-420
25	425	435	XF-435
26	440	450	XF-450
27	455	465	XF-465
28	470	480	XF-480
29	485	495	XF-495
30	500	510	XF-510
31	520	530	XF-530
32	535	545	XF-545
33	550	560	XF-560
34	565	575	XF-575
35	580	590	XF-590

Pole	P	L	Rail designation
1	55	65	XF-65
2	75	85	XF-85
3	95	105	XF-105
4	110	120	XF-120
5	130	140	XF-140
6	150	160	XF-160
7	165	175	XF-175
8	185	195	XF-195
9	205	215	XF-215
10	220	230	XF-230
11	240	250	XF-250
12	260	270	XF-270
13	280	290	XF-290
14	295	305	XF-305
15	315	325	XF-325
16	335	345	XF-345
17	350	360	XF-360
18	370	380	XF-380
19	390	400	XF-400
20	405	415	XF-415
21	425	435	XF-435
22	445	455	XF-455
23	465	475	XF-475
24	480	490	XF-490
25	500	510	XF-510
26	520	530	XF-530
27	535	545	XF-545
28	555	565	XF-565
29	575	585	XF-585

Shaft assembly



TXS type

Pole	P	L
1	41.5	55.5
2	57	71
3	72.5	86.5
4	88	102
5	103.5	117.5
6	119	133
7	134.5	148.5
8	150	164
9	165.5	179.5
10	181	195
11	196.5	210.5
12	212	226
13	227.5	241.5
14	243	257
15	258.5	272.5
16	274	288
17	289.5	303.5
18	305	319
19	320.5	334.5
20	336	350
21	351.5	365.5

Pole	P	L
1	44.5	58.5
2	63	77
3	81.5	95.5
4	100	114
5	118.5	132.5
6	137	151
7	155.5	169.5
8	174	188
9	192.5	206.5
10	211	225
11	229.5	243.5
12	248	262
13	266.5	280.5
14	285	299
15	303.5	317.5
16	322	336
17	340.5	354.5
18	359	373
19	377.5	391.5

* Rail designation is XD-pole for standard rail TXB type.
 * Rail designation is KD-pole for reinforced rail TKB type.

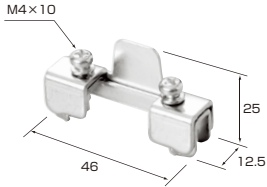


TXH TYPE

ACCESSORIES

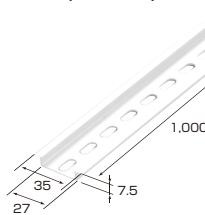
End clamp

●TXL

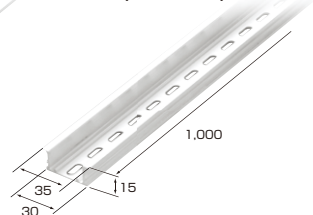


Aluminium rail (DIN)

●TXB (standard)

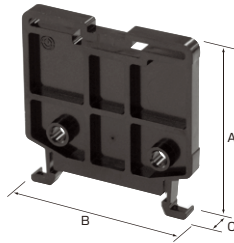


●TKB (reinforcad)



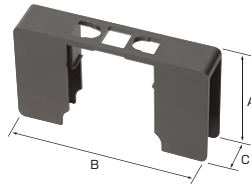
End plate

●TXHE



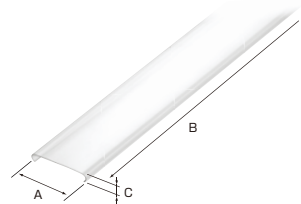
Wire cover

●TXH-□-CV



Terminal cover

●TUC-8 (for terminal)



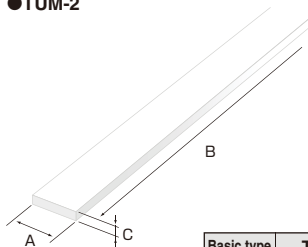
Basic type	TXHE-5.5	TXHE-14
A	51	59
B	50	55
C	5	5

Basic type	TXH-5.5-CV	TXH-14-CV
A	38	46
B	60	80
C	12.5	15.5

Basic type	TUC-8
A	50
B	1,000
C	7

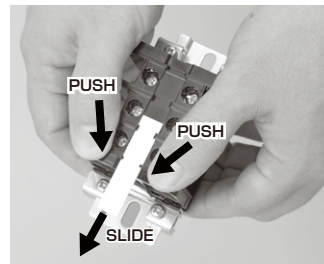
Marker strip

●TUM-2



Basic type	TUM-2
A	10
B	900
C	1

How to remove marker strip



Marker strip is easily removed by pushing end the plate.