



# SQUARE TYPE LED INDICATOR

## PRODUCT CODING

### [QXL type]

## QXL-110-RB (F)

Basic type		Supply voltage		Frame color		Lens type	
Code	Mounting hole (φ)	Code	Voltage	Code	Color	Code	Type
QXL	25	024	24V AC / DC	B	Black (N1.5)	F	Flat type
		048	48V AC / DC				
		110	100 / 110V AC / DC				
		125	125V AC / DC				
		220	200 / 220V AC / DC				

Code	Color	Code	Color
R	Red	G	Green
O	Orange	Y	Yellow <sup>*2</sup>
W	Milk white	B	Blue <sup>*2</sup>

\*2 Yellow and blue are special colors.

### [KXL type]

## KXL-110-RB (K)

Basic type		Supply voltage		Frame color		Lens type	
Code	Mounting hole (φ)	Code	Voltage	Code	Color	Code	Type
KXL	25	024	24V AC / DC	B	Black (N1.5)	K	Chevron type
		048	48V AC / DC				
		110	100 / 110V AC / DC				
		125	125V AC / DC				
		220	200 / 220V AC / DC				

Code	Color	Code	Color
R	Red	G	Green
O	Orange	Y	Yellow <sup>*2</sup>
W	Milk white	B	Blue <sup>*2</sup>

\*2 Yellow and blue are special colors.

### [CXL type]

## CXL30-024-RB (F)

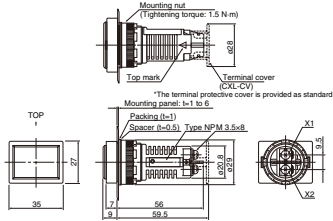
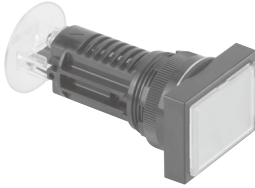
Basic type		Supply voltage		Frame color		Lens type	
Code	Size (mm)	Code	Voltage	Code	Color	Code	Type
CXL30	30×30	024	24V AC / DC	B	N1.5	F	Flat type
CXL40	40×40	048	48V AC / DC				
		110	100 / 110V AC / DC				
		125	125V AC / DC				
		220	200 / 220V AC / DC				

Code	Color	Code	Color
R	Red	O	Orange
G	Green	W	Milk white
Y	Yellow	B	Blue

# STANDARD PRODUCTS

## QXL (φ25)



### ●Applicable accessories

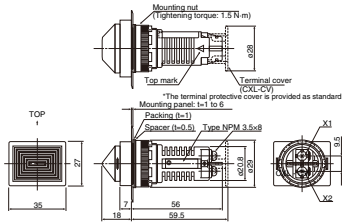
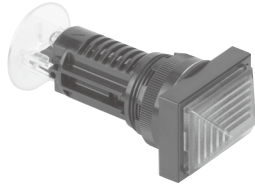
LED	PXL-LED-□-□
Lens	QXL-LENSSET-□(F)
Tightening tool	CXL30-Q
Removing tool	XL-NQ
Protective cover	CXL-CV

### ●Mounting hole size



PILOT LAMP & INDICATOR

## KXL (φ25)



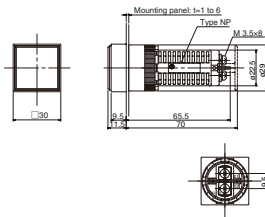
### ●Applicable accessories

LED	PXL-LED-□-□
Lens	KXL-LENS-□(K)
Tightening tool	CXL30-Q
Removing tool	XL-NQ
Protective cover	CXL-CV

### ●Mounting hole size



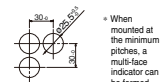
## CXL30 (φ25)



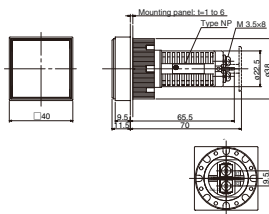
### ●Applicable accessories

LED	CXL30-LED-□-□
Lens	CXL30-LENSSET-□
Tightening tool	CXL30-Q
Removing tool	XL-NQ
Protective cover	CXL-CV
Short bar	DL-SB1

### ●Mounting hole size



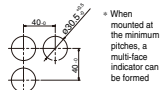
## CXL40 (φ30)



### ●Applicable accessories

LED	CXL40-LED-□-□
Lens	CXL40-LENSSET-□
Tightening tool	CXL40-Q
Removing tool	XL-NQ
Protective cover	CXL-CV
Short bar	DL-SB2













### ●Mounting hole size



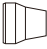












LED INDICATOR

# ACCESSORIES

Classification	Type	Shape	Applicable type
Terminal protection cover	TS-CV		TSPN,TSPH,WSPH (Standard equipment)
	CXL-CV		HXL,JXL,PXL,QXL,KXL,CXL30,CXL40 (Standard equipment)
Jumper	DL-SB1		CXL30
	XL-SB1 C		CXL30
	DL-SB2		CXL40
	XL-SB2 C		CXL40
Removing tool	XL-NQ		CXL-30,CXL-40,HXL,JXL,PXL,QXL,KXL
Tightening tool	Tightening jig B (CXL40-Q)		CXL40
	Tightening jig C		CXL40
	Tightening jig F		TSPN,TSPH,WSPH
	TMP-Q		TMPN,TMPH,WMPH
	CXL30-Q		CXL30,HXL,JXL,QXL,KXL

# PILOT LAMP & INDICATOR

Classification	Type	Shape	Applicable type
Lens	TMP Lens E [Color]	Round flat type 	TMPN,TMPH
	WMP Lens S [Color]	Round type 	WMPH,TMPN,TMPH
	TS Lens E [Color]	Round flat type 	TSPN,TSPH
	WS Lens S [Color]	Round type 	WSPH,TSPN,TSPH
	M22 Lens [Color]	Flat type 	M22
	HXL-Lens [Color] (S) JXL-Lens [Color] (S)	Round type 	HXL JXL
	M25 Lens [Color]	Flat type 	M25
	PXL-Lens [Color] (S)	Round type 	PXL
	KXL-Lens [Color] (K)	Chevron type 	KXL
	QXL Lens Set [Color] (F)	Square type 	QXL
CXL-□ Lens Set [Color]	Square type 	CXL-30,CXL-40	



LED INDICATOR

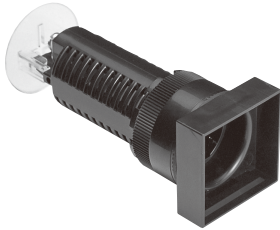
# ACCESSORIES

## Main frame



● **QXL-000**  
 Basic type      Frame only

● **KXL-000**  
 Basic type      Frame only



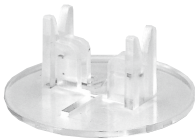
● **CXL30-000**  
 Basic type      Frame only

Basic type	
code	size (mm)
CXL30	30×30
CXL40	40×40

## Terminal protection cover

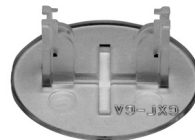
(Order unit: 10)

● **TS-CV**



Applicable type  
 TSPN, TSPH, WSPH (Standard equipment)

● **CXL-CV**



Applicable type  
 HXL, JXL, PXL, QXL, KXL,  
 CXL30, CXL40 (Standard equipment)

# PILOT LAMP & INDICATOR

## Jumper

(Order unit: 100)

DL-SB1	XL-SB1C	DL-SB2	XL-SB2C
	<p>With insulation coat</p>		<p>With insulation coat</p>
Applicable to XL-3000 / 3010 / 3600 and CXL30		Applicable to XL-4000 / 4001 / 4010 / 4800 and CXL40	

## Removing tool

### ●XL-NQ

(Order unit: 100)



This is a tool to remove a lens and an LED unit.

## LED unit

(Order unit: 100)

### ●For TMP and WMP

	Lens color				
	Red	Orange	Green	Yellow	Milk white
<b>TMPN</b>	Red TMP-LEDN-R	Orange TMP-LEDN-O	Green TMP-LEDN-G	-	Yellow TMP-LEDN-Y
<b>TMPH WMPH</b>	Red TMP-LEDH-R	Orange TMP-LEDH-O	Green TMP-LEDH-G	-	Yellow TMP-LEDH-Y

\* Since voltage is controlled with the main unit, a constant voltage is applied to each LED.

### ●For TSP and WSP

	Lens color				
	Red	Orange	Green	Yellow	Milk white
<b>TSPN</b>	Red TS-LEDN-R	Orange TS-LEDN-O	Green TS-LEDN-G	Yellow TS-LEDN-Y	Yellow TS-LEDN-Y
<b>TSPH WSPH</b>	Red TS-LEDH-R	Orange TS-LEDH-O	Green TS-LEDH-G	Yellow TS-LEDH-Y	Yellow TS-LEDH-Y

\* Since voltage is controlled with the main unit, a constant voltage is applied to each LED.

### ●For M22 · M25

	Lens color			
	Red	Orange	Green	Yellow
<b>M22 · M25</b>	Red TS-LED4-G	Orange TS-LED4-O	Green TS-LED4-G	Yellow TS-LED4-Y



LED INDICATOR

# ACCESSORIES

## LED unit

(Order unit: 10)

● For HXL and HXL-WPR



● For JXL, PXL, QXL, KXL, JXL-WPR and PXL-WPR



	Voltage Color	24 V AC / DC	48 V AC / DC	100 / 110 V AC / DC	125 V AC / DC	200 / 220 V AC / DC
		<b>HXL</b>	Red	HXL-LED024-R	HXL-LED048-R	HXL-LED110-R
<b>HXL-WPR</b>	Orange	HXL-LED024-O	HXL-LED048-O	HXL-LED110-O	HXL-LED125-O	HXL-LED220-O
	Milk white	HXL-LED024-W	HXL-LED048-W	HXL-LED110-W	HXL-LED125-W	HXL-LED220-W
	Green	HXL-LED024-G	HXL-LED048-G	HXL-LED110-G	HXL-LED125-G	HXL-LED220-G
	Yellow	HXL-LED024-Y	HXL-LED048-Y	HXL-LED110-Y	HXL-LED125-Y	HXL-LED220-Y
	Blue	HXL-LED024-B	HXL-LED048-B	HXL-LED110-B	HXL-LED125-B	HXL-LED220-B
<b>JXL</b>	Red	PXL-LED024-R	PXL-LED048-R	PXL-LED110-R	PXL-LED125-R	PXL-LED220-R
<b>PXL</b>	Orange	PXL-LED024-O	PXL-LED048-O	PXL-LED110-O	PXL-LED125-O	PXL-LED220-O
<b>QXL</b>	Milk white	PXL-LED024-W	PXL-LED048-W	PXL-LED110-W	PXL-LED125-W	PXL-LED220-W
<b>KXL</b>	Green	PXL-LED024-G	PXL-LED048-G	PXL-LED110-G	PXL-LED125-G	PXL-LED220-G
<b>JXL-WPR</b>	Yellow	PXL-LED024-Y	PXL-LED048-Y	PXL-LED110-Y	PXL-LED125-Y	PXL-LED220-Y
<b>PXL-WPR</b>	Blue	PXL-LED024-B	PXL-LED048-B	PXL-LED110-B	PXL-LED125-B	PXL-LED220-B

● For CXL



	Voltage Color	24 V AC / DC	48 V AC / DC	100 / 110 V AC / DC	125 V AC / DC	200 / 220 V AC / DC
		<b>CXL30</b>	Red	CXL30-LED024-R	CXL30-LED048-R	CXL30-LED110-R
	Orange	CXL30-LED024-O	CXL30-LED048-O	CXL30-LED110-O	CXL30-LED125-O	CXL30-LED220-O
	Milk white	CXL30-LED024-W	CXL30-LED048-W	CXL30-LED110-W	CXL30-LED125-W	CXL30-LED220-W
	Green	CXL30-LED024-G	CXL30-LED048-G	CXL30-LED110-G	CXL30-LED125-G	CXL30-LED220-G
	Yellow	CXL30-LED024-Y	CXL30-LED048-Y	CXL30-LED110-Y	CXL30-LED125-Y	CXL30-LED220-Y
	Blue	CXL30-LED024-B	CXL30-LED048-B	CXL30-LED110-B	CXL30-LED125-B	CXL30-LED220-B
<b>CXL40</b>	Red	CXL40-LED024-R	CXL40-LED048-R	CXL40-LED110-R	CXL40-LED125-R	CXL40-LED220-R
	Orange	CXL40-LED024-O	CXL40-LED048-O	CXL40-LED110-O	CXL40-LED125-O	CXL40-LED220-O
	Milk white	CXL40-LED024-W	CXL40-LED048-W	CXL40-LED110-W	CXL40-LED125-W	CXL40-LED220-W
	Green	CXL40-LED024-G	CXL40-LED048-G	CXL40-LED110-G	CXL40-LED125-G	CXL40-LED220-G
	Yellow	CXL40-LED024-Y	CXL40-LED048-Y	CXL40-LED110-Y	CXL40-LED125-Y	CXL40-LED220-Y
	Blue	CXL40-LED024-B	CXL40-LED048-B	CXL40-LED110-B	CXL40-LED125-B	CXL40-LED220-B

## Separate transformer

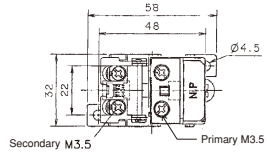


① Transformer

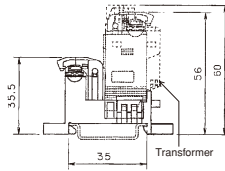


② Transformer base

① Transformer



② Transformer base



The transformer ① and transformer base ② should be ordered separately.  
Both and ① are ② necessary.

① Transformer

Type	Rated primary voltage	Rated secondary voltage
AR9T559-H	100 / 110V	24V
AR9T559-M	200 / 220V	
AR9T559-T	400 / 440V	

② Transformer base

Type
AR9T003