



CAM-OPERATED SWITCH

B TYPE, BH TYPE

ACCESSORIES (selling separately)

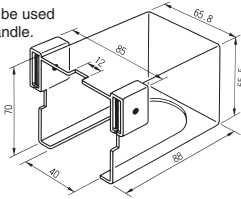
Handle cover

●B-H HCV

This cover is used to prevent mis-operation. It is a magnet type that can be mounted on or removed from a panel easily.

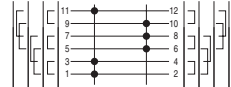
(Material: Polycarbonate resin)

Note: This cover cannot be used for the MP type handle.



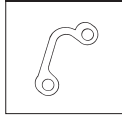
Jumper

For B and BH type

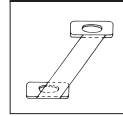


B type	5-9	1-5	1-3	Example of usage of jumper	1-3	5-9	1-5
BH type	1-3	5-9	1-3	Example of usage of jumper	1-3	1-5	5-9

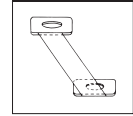
BS jumper 1-3



BS jumper 1-5

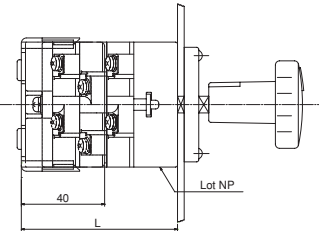
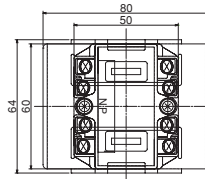


BS jumper 5-9



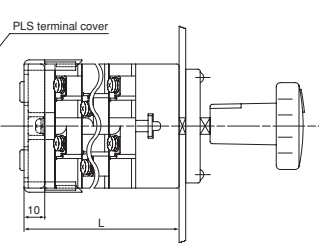
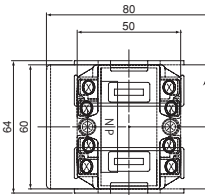
Terminal protection cover

●B-H PL terminal cover 1

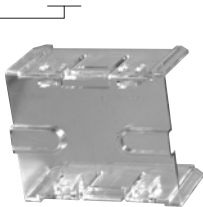


Note: This cover cannot be used for a rear terminal type.

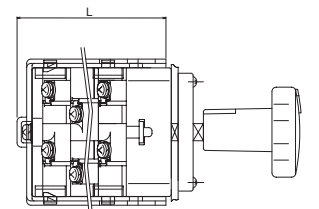
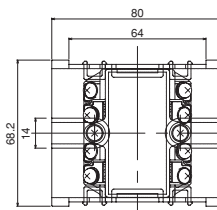
●B-H PLS terminal cover



●BH-CVN-□



Note: This cover cannot be used for a rear terminal type.



	Applicable unit number	L (mm)	Applicable unit number	L (mm)	
AB	1 to 3 units	44	DB	10 to 12 units	160
BB	4 to 6 units	83	EB	13 to 15 units	199
CB	7 to 9 units	121.5			

* The above shows standard type switches. Please ask for special types.

Note: This cover cannot be used for a rear terminal type and a dual-body type.

Flange (Nameplate) set □ : B(N1.5), BG(7.5BG4/1.5)

● B flange set □		● F panel set □		● Indicator flange set □		● BA-6 indicator flange set □	
Supplied screws	① M5×10 countersunk 2 pcs. ② M4×15 SUS 3-piece 1 pc. ③ M2.6×4 tapping 4 pcs.	Supplied screws	① M5×10 countersunk 2 pcs. ② M4×15 SUS 3-piece 1 pc.	Supplied screws	① M5×10 countersunk 2 pcs. ② M4×15 SUS 3-piece 1 pc. ③ M2.6×4 tapping 4 pcs.	Supplied screws	① M5×10 countersunk 2 pcs. ② M4×15 SUS 3-piece 1 pc. ③ M2.6×4 tapping 4 pcs.

Handle

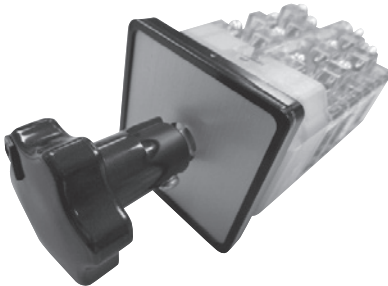
LD-B

Handle code	Color	Code	Color
B	N1.5	BG	7.5BG3/3.5

Code	Shape	Code	Shape
LD	Rose shape (large)	LP	Stick shape (large)
HD	Rose shape (small)	HP	Stick shape (small)
LDP	Rose shape (large) with dot	MP	Pistol shape (large)
HDP	Rose shape (small) with dot	HR	Pistol shape (small)
LF	Octagonal shape (large)	LS	Knob shape
HF	Octagonal shape (small)	LE	Egg shape (large)
LFP	Octagonal shape (large) with dot	HE	Egg shape (small)
HFP	Octagonal shape (small) with dot	HSP	Beak shape (large)
		USP	Beak shape (small)

Please check a dimensions from page A6 "Handle".

Quick nameplate attachment flange



■ HOW TO ORDER

B J Flange set B

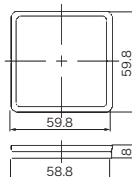
No.	Item	Code	Detail
①	Basic type	B	B/BH type cam operated switch
		J Flange set	Quick nameplate attachment flange
②	Specification	J Indicator flange set	Quick nameplate attachment flange (Indicator type)
		BA-6 J Indicator flange set	Quick nameplate attachment flange (Indicator type)
③	Color	B	Flange color : Black (N1.5)

* Supplied items...SS Countersunk screw M5x10, 4 screws.

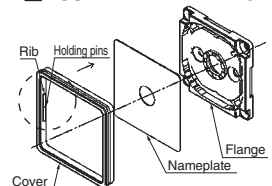
* Material...Modified PPE (UL94V-0) adapted to the fire laws.

* About how to order when attach this item to the main body of the cam operated switch, please contact us separately.

■ OUTLINES



■ ASSEMBLY DRAWING



Rib within the cover can be attach any directions (up or down, left or right) to the flange.

■ FEATURES

- Screw for the nameplate attachment is unnecessary.
- It's possible to quick attachment of the flange without attachment screws.
- Decreasing of work time for nameplate attachment is possible.