



MACLIT INDICATOR

# SS TYPE, SQ TYPE, MS TYPE



## FEATURES

- The Maclit indicator is operated by the electromagnetic polarity inversion method. The status is displayed by rotating the display part. The SS and MS types have built-in LED for night time use.
- SS and MS can display 3 states; "Load ON", "Load OFF", "Loss of power to the indicator".
- Materials with high weather resistance are available for outdoor equipment (SQ and MS types).
- The Maclit Indicator can operate at low power consumption. It offers various advantages including energy saving, space saving, and maintenance free.
- The MS type is provided with the residual display function. When the display power source is lost, the color displayed immediately before that loss and the other colors appear at their respective ratios of 2/3 and 1/3 on the display part. This function allows you to identify the status at a glance in which the power source has been lost (Except for MSD and MSB-S).

## SPECIFICATIONS (RATINGS, PERFORMANCE)

Specification \ Type	SS	SQ	MS
Rated insulation voltage (UI)	250V		
Rated current	18mA		25mA
Power-Frequency withstand voltage	2,000V AC / 1 min.	2,500V AC / 1 min.	
Rated impulse withstand voltage	±7kV / 3 times for each pole (1.2 / 50μs)		
Insulation resistance	10MΩ or more	100MΩ or more	
Shock resistance	50G or more / 6 Directions 3 times for each pole		
Service life	300,000 times or more		100,000 times or more
Location of use	Indoor	Indoor / outdoor	
Operating temperature	-20 to 50°C		-20 to 60°C
Degree of protection	Closed type (IP40)	Water-proof / dust-proof (IP65)	
Weight	Approx. 120g (Excluding separate resistor)	Approx. 140g (Excluding separate resistor)	Approx. 250g

# PILOT LAMP & INDICATOR

## HOW TO ORDER Select from the following product coding.

[SS Maclit type]

**SS - 11 B**

①

②

③

No.	Item	Code	Detail	Note
①	Basic type	SS	Standard type	IP40
		SQ	Waterproof type	IP65
②	Supply voltage	11	100 / 110V AC / DC	—
		12	125V AC / DC	With separate resistor
		22	200 / 220V AC / DC	With separate resistor
③	Surface frame color	B	Black	N1.5
		4 / 1.5	7.5BG4 / 1.5	7.5BG4 / 1.5

\* Color combination is only red/green.

\* In case the panel is not magnetic metal material, please order "SS magnetic plate" as an accessory.

[MS type]

**MS D - DC11 RG B**

①

②

③

④

⑤

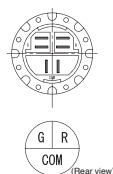
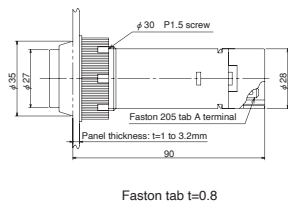
No.	Item	Code	Detail	Note
①	Basic type	MS	—	—
②	Circuit and power supply	D		Please indicate AC or DC
		B—S	See page B37 for MODELS AND CIRCUIT TYPES	Please indicate AC or DC
		No code		AC/DC common type
③	Supply voltage	11	100 / 110V AC / DC	
		22	200 / 220V AC / DC	
		DC11	100 / 110V DC	—
		DC22	200 / 220V DC	
		AC11	100 / 110V AC	
		AC22	200 / 220V AC	With separate resistor
④	Lens color	RG	Red·Green	—
		BW	Black·White	
⑤	Surface frame color	B	Black (N1.5)	
		BG	7.5BG4/1.5	



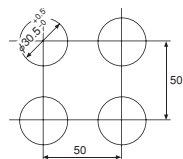
MACLIT INDICATOR

# SS TYPE, SQ TYPE, MS TYPE

## SS TYPE Standard type



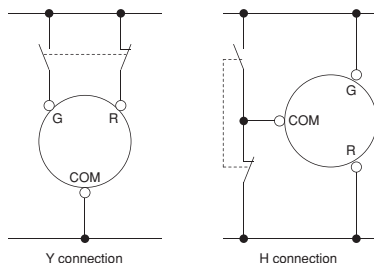
● Mounting hole size



• Do not input to both R and G terminals at the same time, as it may cause abnormal heat generation and ignition.

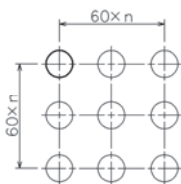
## Wiring connection example

- Internal rectification circuit is provided so that the connection terminal can be used without polarity.
- When using the "Y connection" as shown in the figure below, the G and R terminals should not input voltage at the same time, and the contact operation should not overlap.
- When using the "H connection" as shown below, use the product under non-lapping conditions in terms of contact operation to prevent short-circuiting of the external contacts.



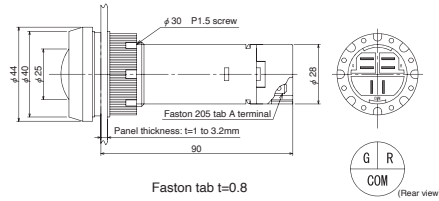
## For installation over 2 x 2

- To prevent operational disturbance caused by internal coils, SS makrits shall be installed with a pitch of 60 mm or more.

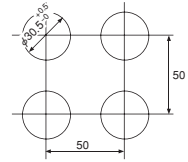


# PILOT LAMP & INDICATOR

## SQ TYPE Waterproof type



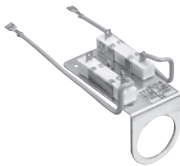
● Mounting hole size



• Do not input to both R and G terminals at the same time, as it may cause abnormal heat generation and ignition.

## ACCESSORIES [SS • SQ TYPE]

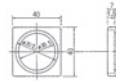
### Resistor [SS □]



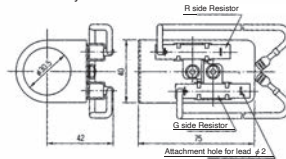
**DC125** for 125V DC  
**SS22** for 220V DC  
 Use SS-11 as the body.

### Square type adapter

Only SS type can be mounted.

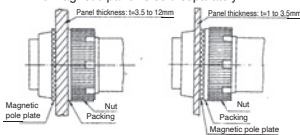


Name	Color
SS adapter B	N1.5



### [SS magnetic plate]

It is necessary when the applicable panel is a non-magnetic body:  
 • The magnetic panel is sold separately.



Note: When the panel thickness is 6 to 12 mm, the nut becomes different. Specify the nut additionally.

Only SS type can be mounted.

### [CXL40-Q]



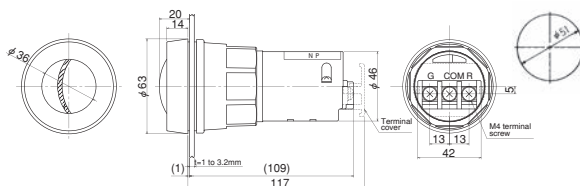


MACLIT INDICATOR

# SS TYPE, SQ TYPE, MS TYPE

## MS TYPE (Common to all models)

● Mounting hole size



- The terminal protective cover (MS-CV) is provided as standard equipment.
- Engraving of terminals are G/R even if the spec is B/W.

## MODELS AND CIRCUIT TYPES

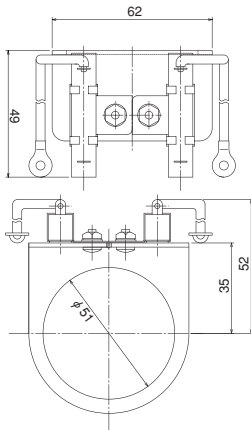
Type	Supply voltage	Surface color	Circuit type		Operating status	Lens color
			110V	220V		
MS-11	110V AC / DC  When used at 220V AC / DC, mount a separate resistor of 3.9kΩ, 10W.	Black • 7.5BG 4/1.5			① When b is turned ON, G (green) is displayed. ② When a is turned ON, R (red) is displayed. ③ When the power is turned OFF, the center color is displayed.	R・G (Red・Green)
MSD-DC11	110V DC  When used at 220V DC, mount a separate resistor of 3.9kΩ, 10W.	Black • 7.5BG 4/1.5			① When b is turned ON, G (green) is displayed. ② When a is turned ON, R (red) is displayed. ③ When the power is OFF, the indicator is in the previous operating mode and does not return to the center color display mode.	R・G (Red・Green)
					① When b is turned ON, B (black) is displayed. ② When a is turned ON, W (white) is displayed. ③ When the power is OFF, the indicator is in the previous operating mode and does not return to the center color display mode.	W・B (White・Black) The LED is yellow.
MSD-AC11	110V AC  When used at 220V AC, mount a separate resistor of 2.4kΩ, 10W.	Black • 7.5BG 4/1.5			① When b is turned ON, G (green) is displayed. ② When a is turned ON, R (red) is displayed. ③ When the power is OFF, the indicator is in the previous operating mode and does not return to the center color display mode.	R・G (Red・Green)
					① When b is turned ON, B (black) is displayed. ② When a is turned ON, W (white) is displayed. ③ When the power is OFF, the indicator is in the previous operating mode and does not return to the center color display mode.	W・B (White・Black) The LED is yellow.

# PILOT LAMP & INDICATOR

Type	Supply voltage	Surface color	Circuit type		Operating status	Lens color
			110V	220V		
MSB-S	110V AC 220V AC  No separate resistor is required.	Black • 7.5BG 4/1.5			① When a is turned ON, (R) (red) (W (white)) is displayed. ② When the power and a are turned OFF, (G) (green) (B (black)) is displayed. This is simple 2-color display without a center color.	 Green • Red Black • White
	110V DC When used at 220V DC, mount a separate resistor of 3.9kΩ, 10W.	Black • 7.5BG 4/1.5			① When a is turned ON, (R) (red) (W (white)) is displayed. ② When the power and a are turned OFF, (G) (green) (B (black)) is displayed. This is simple 2-color display without a center color.	 Green • Red Black • White

## ACCESSORIES

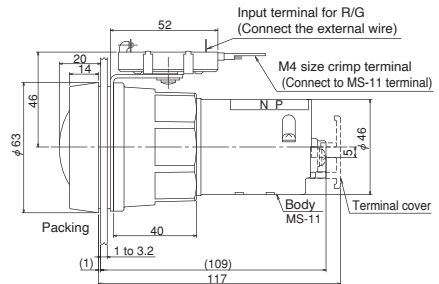
[MS-R-22]



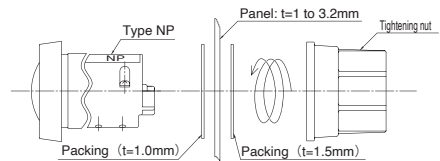
To use the 100 / 110 V AC / DC type indicator with a 200 / 220 V AC or 200 / 220 V DC power supply, a separate resistor is required.

\* If you order the 200 / 220 V AC / DC type indicator, a separate resistor comes with the product as a standard equipment.

## SEPARATE RESISTER INSTRUCTION

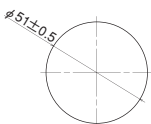


## HOW TO MOUNT [MS type]

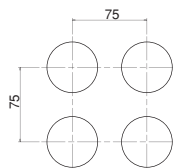


## Panel cut dimensions and minimum mounting pitch

Panel cut dimensions(common)



Mounting pitch(MS-11)



Mounting pitch(MS-22)

