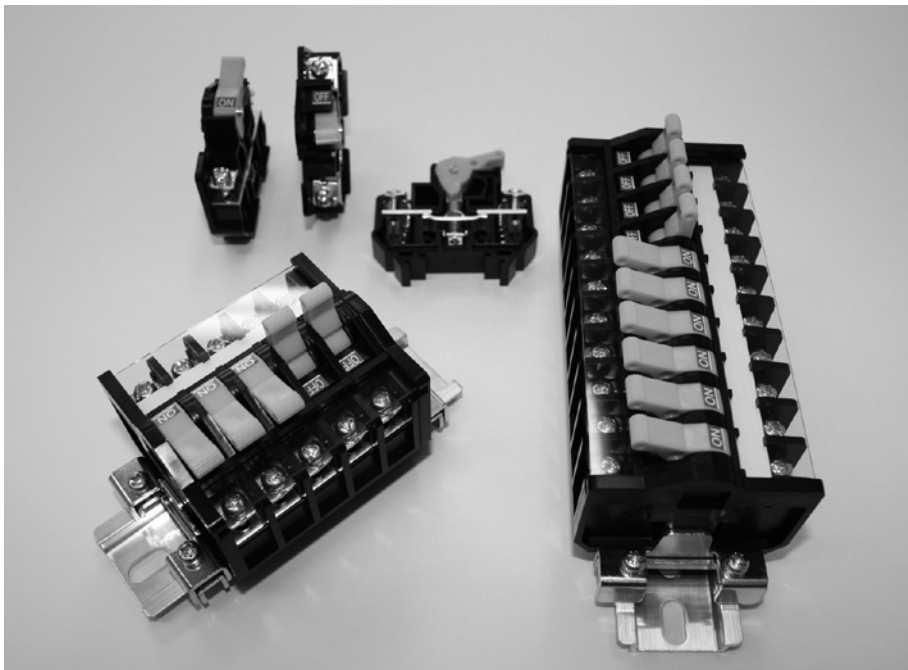




DISCONNECTING TERMINAL BLOCK

# AFD TYPE



## FEATURES

- By lever operation, it's enable to disconnect the left and right circuits.
- With up-screw terminals, wires up to 5.5 mm<sup>2</sup> can be connected.
- The terminal block can be mounted on DIN rails.
- Maximum 4 poles can be disconnected at once according to the usage.
- With ON-OFF indication labels that can be group the state at a glance.
- Stainless steel screw specifications are also available.

## SPECIFICATIONS (RATINGS, PERFORMANCE)

Type	AFD-5.5
Specification	
Rated insulation voltage (Ui)	600V
Rated current-carrying capacity (Ith)	30A
Rated cross-section	5.5mm <sup>2</sup>
Screw size	M4×8.5
Number of conductors simultaneously connectable	2
Power-Frequency withstand voltage	2,500V AC / 1 min.
Rated impulse withstand voltage	±6kV / 3 times for each pole (1.2 / 50 μs)
Ambient operating temperature	-20 to 60°C
Storing temperature	-40 to 75°C
Altitude	2,000 m or less

A SWITCH

B PILOT LAMP & INDICATOR

C CONNECTING DEVICES

D ELECTRONIC DEVICES



DISCONNECTING TERMINAL BLOCK

# AFD TYPE

## How to order of terminal blocks

**AFD-5.5 SUS × 10 XF-165 MR**

① ② ③ ④ ⑤

(blank)	standard
MR*	tropical region type

\*applicable models only

●Information of tropical region type  
 Screw ..... Stainless steel  
 Rail ..... Varnish coated  
 End clamp ..... Thick plated  
 Tropical region type nameplate (attached to end plate) ..... Moisture resistance

No.	Item	Code	Detail	Remark
①	Code	AFD-□	□: Applicable wire size	
②	Screw type	(blank)	Iron screw	
		SUS	Stainless steel screw	
③	No. of poles	1 to max.	AFD-5.5      1~46	Max. pole No. is less than 600mm of rail length. (In case over 600mm, max. pole No. is less than 1,000mm of reinforced rail (TKB-D).)
④	Rail	XD	TXB-D type rail	Punched rail      (Recommended maximum length: 600mm)
		XF	TXB-F type rail	U-cut rail      (Recommended maximum length: 600mm)
⑤	Tropical region type <sup>1)</sup>	(blank)		Standard
		MR	Tropical region type	Special model

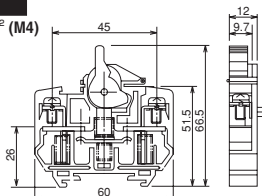
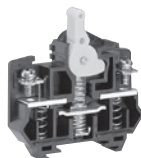
<sup>1)</sup>For purchase of a single unit, specify ① and ② only.

\*1. Additionally indicate "SUS" on clause ② when you order the tropically-adapted products.

## STANDARD PRODUCTS

### AFD-5.5 (30A)

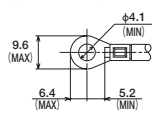
Applicable wire size: 2.0 to 5.5 mm<sup>2</sup> (M4)



#### ●Applicable accessories

End plate	AFDE-5.5A
	AFDE-5.5B
Standard marker strip	TUM-2
Standard rail	TXB
End clamp	TXL
Cover	AFDC-5.5

#### ●Applicable crimp terminal



→ With insulating cover

## TABLE OF ASSEMBLED DIMENSIONS

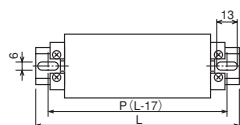
### AFD type assembly on punched rail

#### TXB-D type

The assembled dimensions for the TKB-D (Reinforced rail) are the same as shown in the following table.  
 However, the rails are marked as KD-□.

AFD-5.5

Pole	2	3	4	6	8	10	12	14	16	18	20	22	24	26	28	30
P	60	80		100	140	160	180	200	220	260	280	300	340	340	380	400
L	77	97		117	157	177	197	217	237	277	297	317	357	357	397	417
Rail	XD-4	XD-5		XD-6	XD-8	XD-9	XD-10	XD-11	XD-12	XD-14	XD-15	XD-16	XD-17	XD-18	XD-20	XD-21

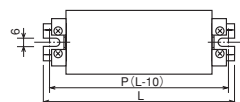


### AFD type assembly on U-cut rail

#### TXB-F type

AFD-5.5

Pole	2	3	4	6	8	10	12	14	16	18	20	22	24	26	28	30
P	60	70	85	105	130	155	180	205	225	250	275	300	325	345	370	395
L	70	80	95	115	140	165	190	215	235	260	285	310	335	355	380	405
Rail	XF-70	XF-80	XF-95	XF-115	XF-140	XF-165	XF-190	XF-215	XF-235	XF-260	XF-285	XF-310	XF-335	XF-355	XF-380	XF-405



## ACCESSORIES

Please see page C127 to C130 for accessories.