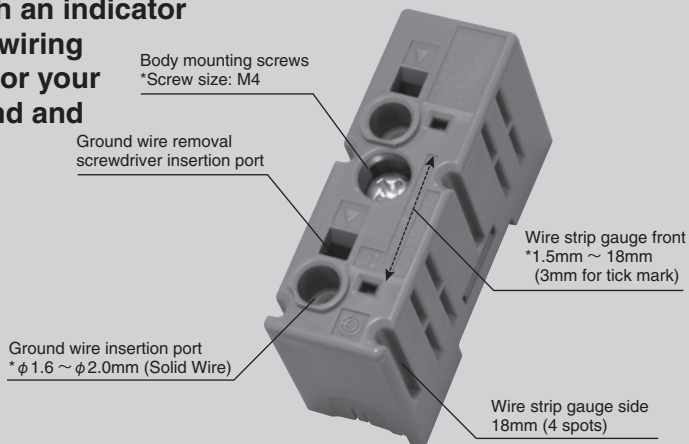




GROUND TERMINAL BLOCK

TPG TYPE

Ground wire can be connected quickly.
The installation work for industrial distribution boards will be reduced.
It comes with an indicator to show the wiring connection for your peace of mind and safety.



FEATURES

●FEATURES① For construction companies (Features of work side)

Easy

- Wiring work possible without a screwdriver.
There is no need to tighten screws, and you can connect to the bus bar by simply inserting the wire.
- * Ground wiring work time can be reduced to 1/4.
(According to our research "Comparison with screws.")

Save man-hours

- The wire connection work only requires inserting the wires, which helps to reduce time.
No screws need to be tightened, so no torque control or special tools are required.

Visible safety

- Achieves "safe, secure, and reliable" work by displaying the wire connection status.
Eliminates anxiety during wire connection work.

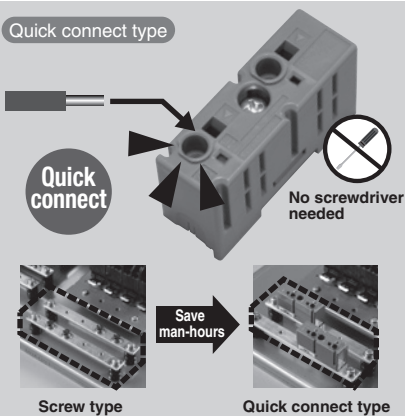
Wire **Unconnected**
Indicator **Green**



Wire **Connected**
Indicator **White**



Quick connect type



●FEATURES② For industrial switchboard manufacturing companies (Features of Manufacturing)

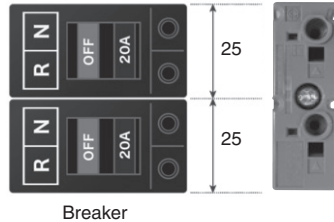
Space saving

- The dimensions are designed to match the size of the breaker, with each pole being 25mm wide.

Safety and labor saving

- Two breaker poles can be installed in one place.
 - The mounting screws for the BUS BAR are built into the body, so there is no need to worry about the screws falling off, allowing for safe and efficient mounting.
 - From the above, it can contribute to reducing installation man-hours.
- Installation time is reduced to 1/3 compared to screw fastening types.

Installation image diagram



Breaker

SPECIFICATIONS (RATINGS, PERFORMANCE)

Item	Detail
Ambient operating temperature	-25°C to 60°C (no freeze)
Storing temperature	-40°C to 85°C
Relative humidity	45 to 85%
Altitude	2,000m or less

Item	Detail	
Rated conductor cross-sectional area and conductor diameter	Single wire $\phi 2.0\text{mm}$	
Rated connecting capacity	Single wire $\phi 1.6\sim 2.0\text{mm}$	
Recommended tightening torque	1.2N·m	
Screw size	M4	
Appearance color	Green	
Wire connection indication	Unconnection	Green
	Connection	White

How to order

TPG - D2 - A

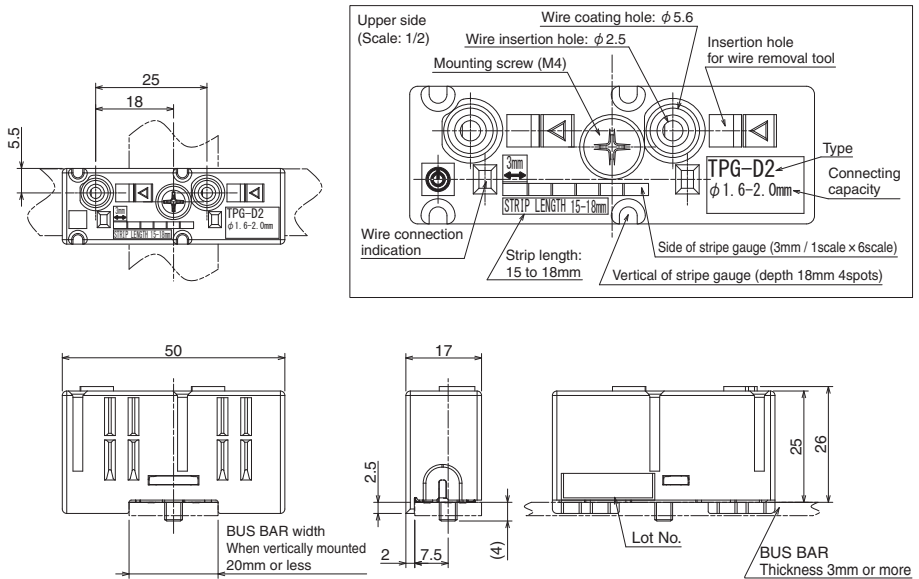
No.	Item	Code	Description	Remark
①	Basic type	TPG	TPG type	—
②	Rated conductor cross-sectional area and conductor diameter	D2	Single core wire conductor diameter	—
③	Individual specification	A	Connection, shape	Wire connector (2 spots) W50×D17×H26



GROUND TERMINAL BLOCK

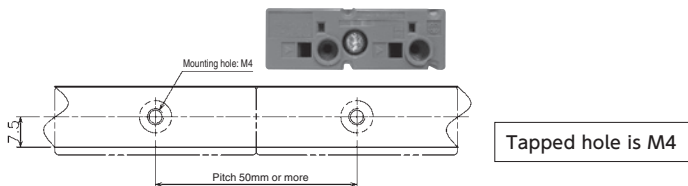
TPG TYPE

OUTLINES (mm)



MOUNTING DIMENSION (mm)

Bus-bar (horizontal)



Bus-bar (vertical)

