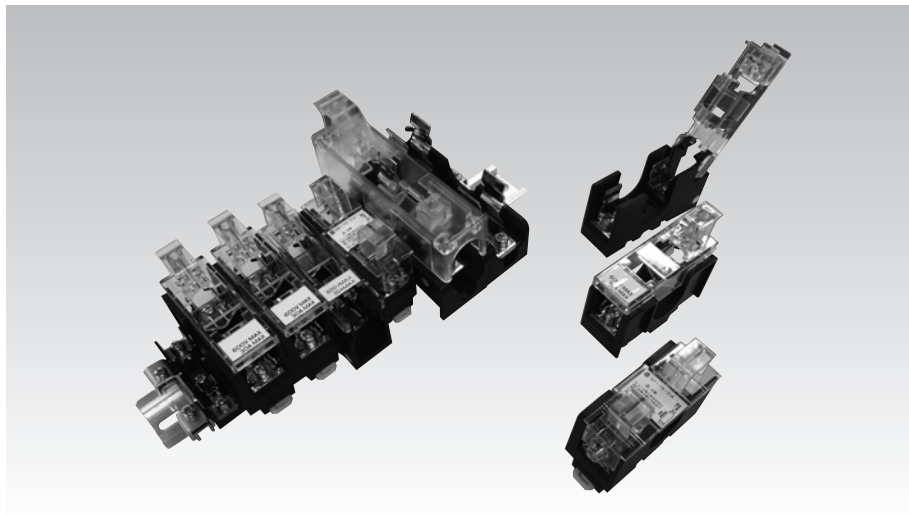




# FUSE HOLDER



## FEATURES

### ● Various variations

In addition to general cylindrical fuses, products compatible with fuse links with blown indication are also available.  
Rail mounting is also available in addition to stand-alone mounting.

### ● New lineup of rail mounting adapter with one touch (PF-30A \*page C178)

An adapter that enables one-touch mounting of fuse holders to DIN rails has been added.  
This makes it easy to attach and detach the fuse holder to and from the rail, contributing to a reduction in man-hours.

### ● Light weight and high rigidity

This fuse holder is highly resistant against shock and vibrations to hold the fuse in place.

## SPECIFICATIONS (RATINGS, PERFORMANCE)

Type	F-10	PF-34 PF-34S PF-34A	PF-35 PF-35S PF-35A	DF-34	DF-35	NF-61 NF-61S	NF-62 NF-62S	SF-15 SF-15S SF-15A	
Specification									
Rated insulation voltage (UI)	250V	600V							
Rated current-carrying capacity (Ith)	10A	30A				60A		10A	
Rated cross-section	5.5mm²	14mm²							
Screw size	M4x8	M4x10	M5x12	M4x10	M5x12	M5x10		M5x12	
Power-Frequency withstand voltage	2,500V AC / 1 min.								
Rated impulse withstand voltage	±7kV / 3 times for each pole (1.2 / 50 μs)								±7.2kV / 3 times for each pole
Ambient operating temperature	-20 to 50°C	-40 to 70°C						-20 to 50°C	
Insulation resistance (500 MV DC)	1,000 MΩ or more								

### ■ Applicable fuse (Reference)

Applicable fuse	10A (φ 6.4×30mm)	30A (φ 15×50mm)	30A (φ 20×57mm)	60A (φ 20×75mm)	*
-----------------	------------------	-----------------	-----------------	-----------------	---

\* Plug type fuse "P6" according to JIS C8319.

## HOW TO ORDER

In case of single unit

**PF-34** **C**  
① ②

In case of rail assembly

**PF-34** **C** × **10** **UF**  
① ② ③ ④

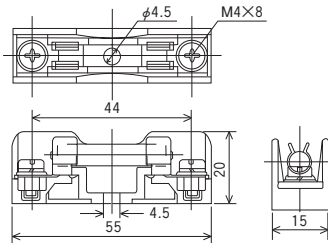
No.	Item	Code	Detail	Remark
①	Code	F-10	—	
		PF-34 / PF-35	—	
		PF-34S / PF-35S	With stopper	Assembly not possible
		PF-34A / PF-35A	With PIN rail with one touch mounting	
		DF-34 / DF-35	—	
		NF-61 / NF-62	—	
		NF-61S / NF-62S	With stopper	
		SF-15	—	
		SF-15S	With stopper	
		SF-15A	With PIN rail with one touch mounting	
②	Carrier	C	With carrier	SF-15/SF-15S is "CB"
		(blank)	With no carrier	
③	No. of poles	1~	1~	In case of with adapter, rail assembly is not available
④	Rail	UD	TUB-D type rail	Punched rail
		UF	TUB-F type rail	U-cut rail
		XD	TXB-D type rail	Punched rail
		XF	TXB-F type rail	U-cut rail

\* PF-34A, PF-35A, SF-15A can buy only separately.  
\* For purchase of a single unit, specify ① and ② only.

## STANDARD PRODUCTS

F type

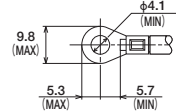
**F-10** (10A)



### ●Applicable accessories

Standard rail	TUB
End clamp	F-B end clamp (for TUB)
Rail mounting tab	F-B tab (for TUB)
Cover	F-10 carrier

### ●Applicable crimp terminal



\* With insulating cover



# FUSE HOLDER

## STANDARD PRODUCTS

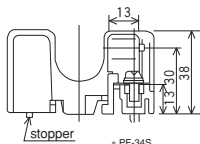
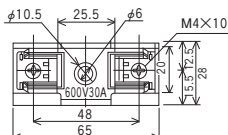
**PF type:** (PF can be mounted on TUB rail without a rail mounting tab.) \* Can be mounted on DIN rail with adapter (PF-30A)

### PF-34 · PF-34S (30A)

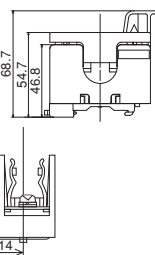


Remark: When a stopper is attached to PF-34, the model name shall be PF-34S. "S" means stopper.

If you wish to assemble the rail, Please select PF-34.



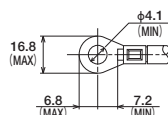
● With carrier and adapter



#### ● Applicable accessories

Standard rail	TUB
End clamp	F-8 end clamp (for TUB)
Cover	PF-30 carrier

#### ● Applicable crimp terminal



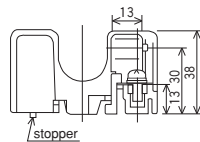
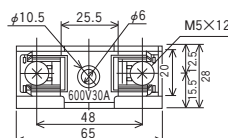
\* With insulating cover

### PF-35 · PF-35S (30A)

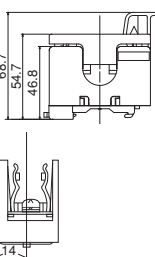


Remark: When a stopper is attached to PF-35, the model name shall be PF-35S. "S" means stopper.

If you wish to assemble the rail, Please select PF-35.



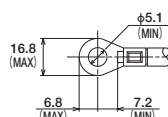
● With carrier and adapter



#### ● Applicable accessories

Standard rail	TUB
End clamp	F-8 end clamp (for TUB)
Cover	PF-30 carrier

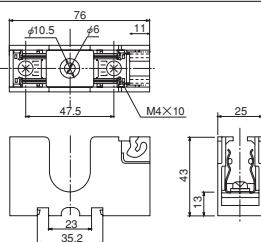
#### ● Applicable crimp terminal



\* With insulating cover

**DF type:** (DF can be mounted on DIN rail (TXB) without a rail mounting tab.)

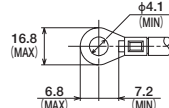
### DF-34 (30A)



#### ● Applicable accessories

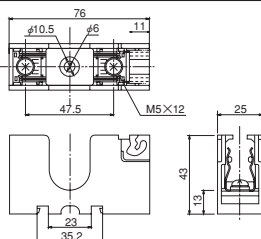
Standard rail	TXB
End clamp	AFL
Cover	DF-30 carrier

#### ● Applicable crimp terminal



\* With insulating cover

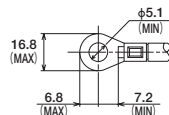
### DF-35 (30A)



#### ● Applicable accessories

Standard rail	TXB
End clamp	AFL
Cover	DF-30 carrier

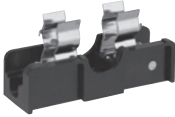
#### ● Applicable crimp terminal



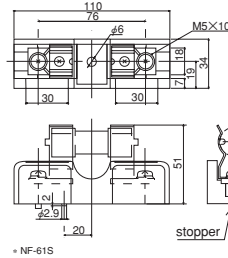
\* With insulating cover

## NF type

### NF-61 · NF-61S (60A)



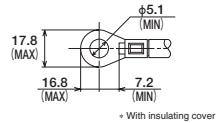
Remark: When a stopper is attached to NF-61, the model name shall be NF-61S. "S" means stopper.  
If you wish to assemble the rail, Please select NF-61.



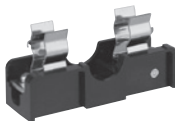
#### ●Applicable accessories

Standard rail	TXB
End clamp	TCL
Cover	NF-61 carrier

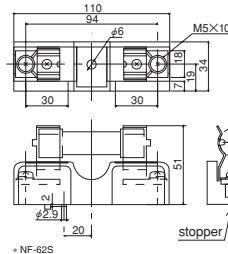
#### ●Applicable crimp terminal



### NF-62 · NF-62S (60A)



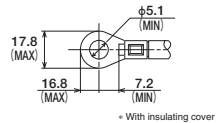
Remark: When a stopper is attached to NF-62, the model name shall be NF-62S. "S" means stopper.  
If you wish to assemble the rail, Please select NF-62.



#### ●Applicable accessories

Standard rail	TXB
End clamp	TCL
Cover	NF-62 carrier

#### ●Applicable crimp terminal

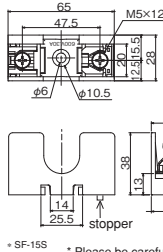


## SF type

### SF-15 · SF-15S (10A)

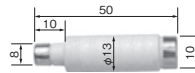


Remark: When a stopper is attached to SF-15, the model name shall be SF-15S. "S" means stopper.  
If you wish to assemble the rail, Please select SF-15.

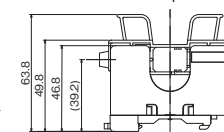


#### ●Fuse ring

● Applicable dimensions



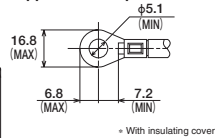
#### ●With carrier and adapter



#### ●Applicable accessories

Standard rail	TUB
End clamp	F-B end clamp
Cover	SF-15 carrier

#### ●Applicable crimp terminal



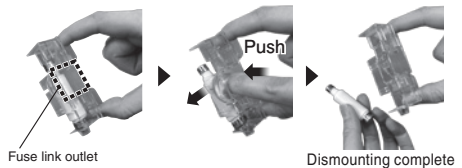
## FUSE ATTACHING AND DETACHING METHOD (SF TYPE)

Attachment and detachment is done from the side of the carry.

### Attaching method



### Detaching method





# FUSE HOLDER

## ACCESSORIES

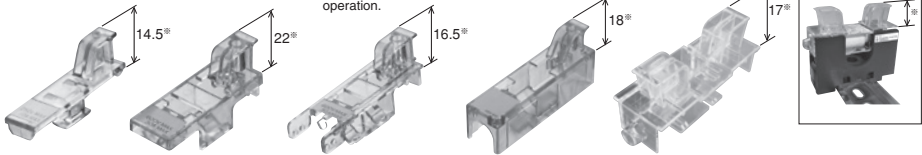
### Carrier

A nameplate seal is provided.  
Attach it when using the carrier.

(Order unit: 100)

- F-10 carrier
- PF-30 carrier
- DF-30 carrier
- NF-61 carrier
- NF-62 carrier
- SF-15-CB
- Reference

This carrier can be mounted on the holder and used with lever operation.



### Aluminum rail

- TXB (DIN rail)

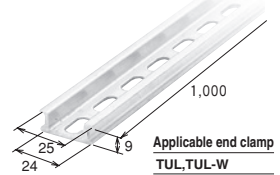
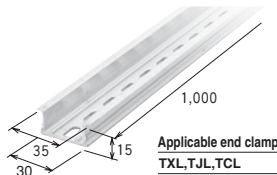
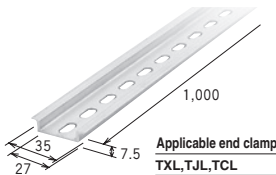
(Order unit: 50)

- TKB (Reinforced DIN rail)

(Order unit: 20)

- TUB (Fuji exclusive rail)

(Order unit: 50)



### End clamp

(Order unit: 100)

- F-B end clamp (for TUB)



- AFL (for TXB)



- TCL end clamp (for TXB) for SF-15



### Rail mounting tab

(Order unit: 100)

- F-B tab (for TUB)



- F-B DIN tab (for TXB)



Applicable types
F-10, NF-61, NF-61S NF-62, NF-62S

Applicable types
F-10 PF-34, PF-34S PF-35, PF-35S NF-61 NF-62 SF-15, SF-15S

### Nameplate label

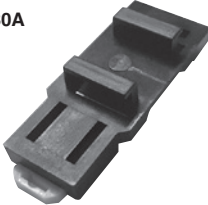
(Order unit: 100)

This is a label for attach on the upper side of the carrier.

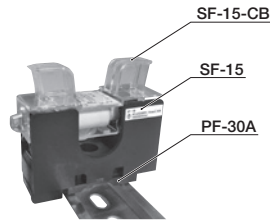
Nameplate	Applicable types
250V MAX 10A MAX	F-10
600V MAX 30A MAX	PF-34, 34S PF-35, 35S
600V MAX 30A MAX	DF-34 DF-35
600V MAX	NF-61 NF-62

## Rail mounting adapter with one touch

●PF-30A



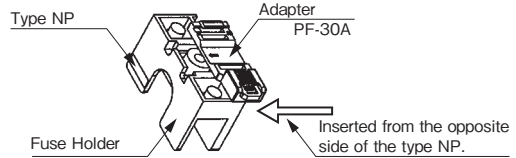
**Applicable holder**  
SF-15 / SF-15S  
PF-34 / PF-34S  
PF-35 / PF-35S



## How to use rail mounting adapter with one touch

### Attaching adapter method

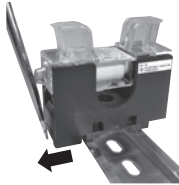
Insert the adapter in the direction of the arrow shown on the right until it sounds.



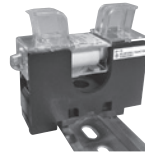
## Rail attaching and detaching method



**Attaching on the rail**  
Easy attaching by pushing into the rail.



**Detaching from the rail**  
Just plug the screwdriver into the white claw and pull it in the direction of the arrow to detach it.



**Rail mounting is tab not required**  
It can be fixed with only an adapter. It's structured to prevent left and right misalignment.

## MOUNTING HOLE DIMENSIONS

F-10	PF-34, PF-35, SF-15	PF-34S, PF-35S, SF-15S
DF-34, DF-35	NF-61, NF-62	NF-61S, NF-62S