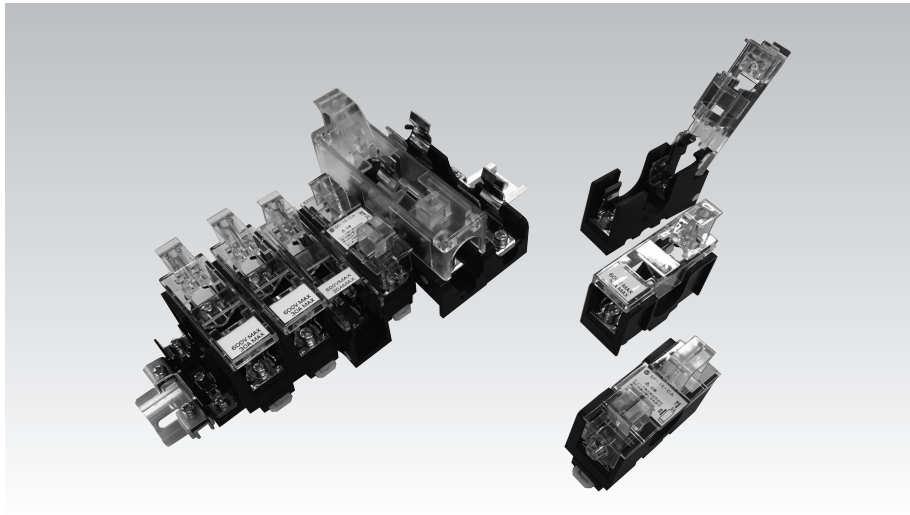




FUSE HOLDER



FEATURES

● Various variations

In addition to general cylindrical fuses, products compatible with fuse links with blown indication are also available.
Rail mounting is also available in addition to stand-alone mounting.

● New lineup of rail mounting adapter with one touch (PF-30A *page C178)

An adapter that enables one-touch mounting of fuse holders to DIN rails has been added.

This makes it easy to attach and detach the fuse holder to and from the rail, contributing to a reduction in man-hours.

● Light weight and high rigidity

This fuse holder is highly resistant against shock and vibrations to hold the fuse in place.

SPECIFICATIONS (RATINGS, PERFORMANCE)

Type	F-10	PF-34 PF-34S PF-34A	PF-35 PF-35S PF-35A	DF-34	DF-35	NF-61 NF-61S	NF-62 NF-62S	SF-15 SF-15S SF-15A
Rated insulation voltage (UI)	250V	600V						
Rated current-carrying capacity (Ith)	10A	30A				60A		10A
Rated cross-section	5.5mm ²	14mm ²						
Screw size	M4×8	M4×10	M5×12	M4×10	M5×12	M5×10		M5×12
Power-Frequency withstand voltage	2,500V AC / 1 min.							
Rated impulse withstand voltage	±7kV / 3 times for each pole (1.2 / 50 μs)							±7.2kV / 3 times for each pole
Ambient operating temperature	-20 to 50°C	-40 to 70°C					-20 to 50°C	
Insulation resistance (500 MV DC)	1,000 MΩ or more							

■ Applicable fuse (Reference)

Applicable fuse	10A (φ 6.4×30mm)	30A (φ 15×50mm)	30A (φ 20×57mm)	60A (φ 20×75mm)	*
-----------------	------------------	-----------------	-----------------	-----------------	---

* Plug type fuse "P6" according to JIS C8319.



FUSE HOLDER

STANDARD PRODUCTS

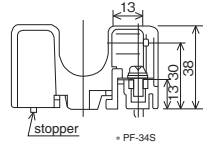
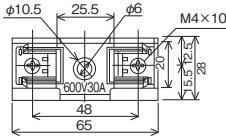
PF type: (PF can be mounted on TUB rail without a rail mounting tab.) * Can be mounted on DIN rail with adapter (PF-30A)

PF-34 · PF-34S (30A)

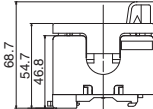


Remark: When a stopper is attached to PF-34, the model name shall be PF-34S. "S" means stopper.

If you wish to assemble the rail, Please select PF-34.



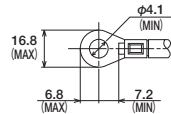
● With carrier and adapter



● Applicable accessories

Standard rail	TUB
End clamp	F-8 end clamp (for TUB)
Cover	PF-30 carrier

● Applicable crimp terminal



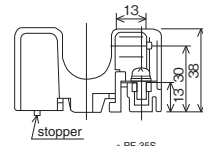
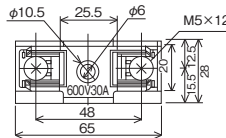
* With insulating cover

PF-35 · PF-35S (30A)

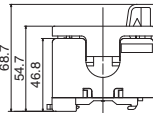


Remark: When a stopper is attached to PF-35, the model name shall be PF-35S. "S" means stopper.

If you wish to assemble the rail, Please select PF-35.



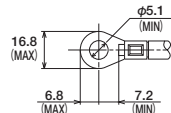
● With carrier and adapter



● Applicable accessories

Standard rail	TUB
End clamp	F-8 end clamp (for TUB)
Cover	PF-30 carrier

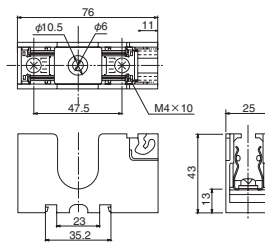
● Applicable crimp terminal



* With insulating cover

DF type: (DF can be mounted on DIN rail (TXB) without a rail mounting tab.)

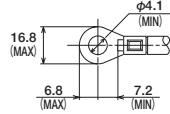
DF-34 (30A)



● Applicable accessories

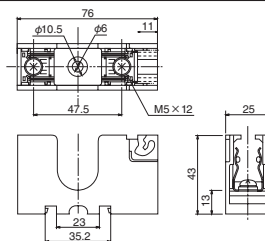
Standard rail	TXB
End clamp	AFL
Cover	DF-30 carrier

● Applicable crimp terminal



* With insulating cover

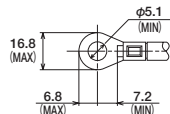
DF-35 (30A)



● Applicable accessories

Standard rail	TXB
End clamp	AFL
Cover	DF-30 carrier

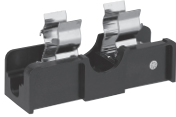
● Applicable crimp terminal



* With insulating cover

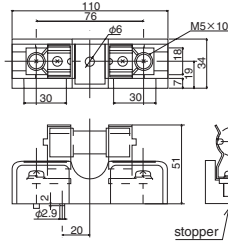
NF type

NF-61 · NF-61S (60A)



Remark: When a stopper is attached to NF-61, the model name shall be NF-61S. "S" means stopper.

If you wish to assemble the rail, Please select NF-61.

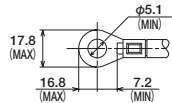


* NF-61S

●Applicable accessories

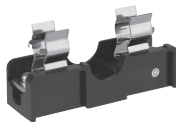
Standard rail	TXB (TUB)
*Rail mounting tab must be ordered separately.	
End clamp	TCL
Cover	NF-61 carrier

●Applicable crimp terminal



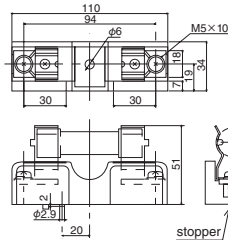
* With insulating cover

NF-62 · NF-62S (60A)



Remark: When a stopper is attached to NF-62, the model name shall be NF-62S. "S" means stopper.

If you wish to assemble the rail, Please select NF-62.

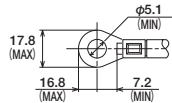


* NF-62S

●Applicable accessories

Standard rail	TXB (TUB)
*Rail mounting tab must be ordered separately.	
End clamp	TCL
Cover	NF-62 carrier

●Applicable crimp terminal



* With insulating cover

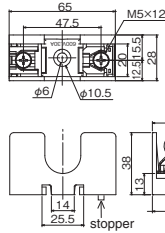
SF type

SF-15 · SF-15S · SF-15A (10A)



Remark: When a stopper is attached to SF-15, the model name shall be SF-15S. "S" means stopper.

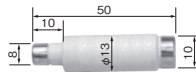
If you wish to assemble the rail, Please select SF-15.



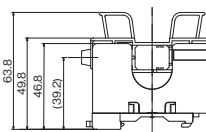
* SF-15S

* Please be careful in the mounting direction when inserting the fuse.
Please insert the melt indication side securely on the convex side of the carry.

●Fuse ring • Applicable dimensions



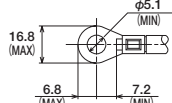
●With carrier and adapter



●Applicable accessories

Standard rail	TUB (TXB)
*Rail mounting tab must be ordered separately.	
End clamp	F-B end clamp
Cover	SF-15 carrier

●Applicable crimp terminal



* With insulating cover

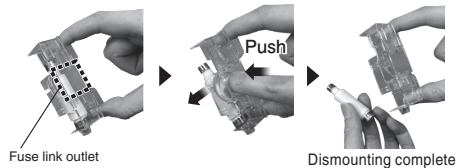
FUSE ATTACHING AND DETACHING METHOD (SF TYPE)

Attachment and detachment is done from the side of the carry.

Attaching method



Detaching method





FUSE HOLDER

ACCESSORIES

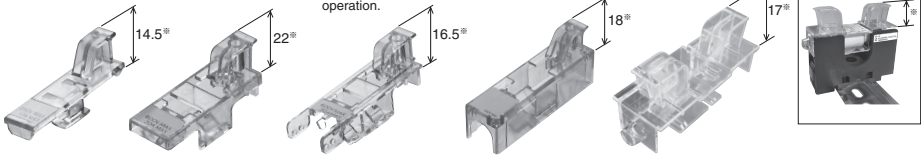
Carrier

A nameplate seal is provided.
Attach it when using the carrier.

(Order unit: 100)

- F-10 carrier
- PF-30 carrier
- DF-30 carrier
- NF-61 carrier
- SF-15-CB
- Reference

This carrier can be mounted on the holder and used with lever operation.



Aluminum rail

- TXB (DIN rail)

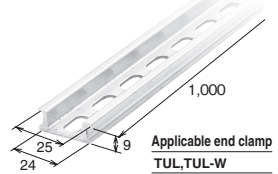
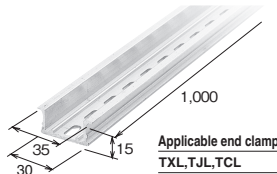
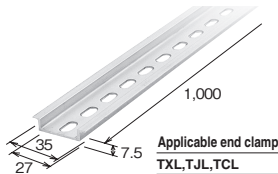
(Order unit: 50)

- TKB (Reinforced DIN rail)

(Order unit: 20)

- TUB (Fuji exclusive rail)

(Order unit: 50)



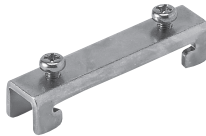
End clamp

(Order unit: 100)

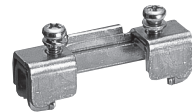
- F-B end clamp (for TUB)



- AFL (for TXB)



- TCL end clamp (for TXB) for SF-15



Rail mounting tab

(Order unit: 100)

- F-B tab (for TUB)



Applicable types
F-10, NF-61, NF-61S NF-62, NF-62S

- F-B DIN tab (for TXB)



Applicable types
F-10 PF-34, PF-34S PF-35, PF-35S NF-61 NF-62 SF-15, SF-15S

Nameplate label

(Order unit: 100)

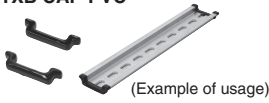
This is a label for attach on the upper side of the carrier.

Nameplate	Applicable types
250V MAX 10A MAX	F-10
600V MAX 30A MAX	PF-34, 34S PF-35, 35S
600V MAX 30A MAX	DF-34 DF-35
600V MAX	NF-61 NF-62

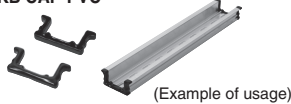
Rail cap

(Order unit: 100)

●Cap for DIN rail
TXB CAP-PVC



●Cap for DIN rail (High-strength type)
TKB CAP-PVC



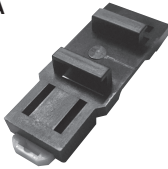
●Cap for Fuji exclusive rail
TUB CAP-PVC



* Only single product sale.

Rail mounting adapter with one touch

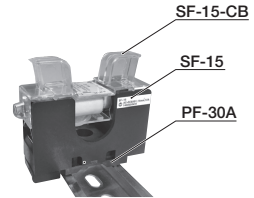
●PF-30A



Applicable holder

SF-15 / SF-15S
PF-34 / PF-34S
PF-35 / PF-35S

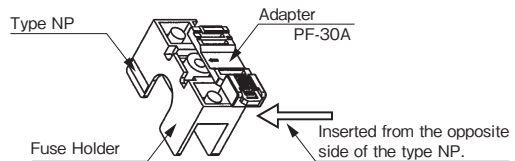
Rail Installation
Diagram



How to use rail mounting adapter with one touch

Attaching adapter method

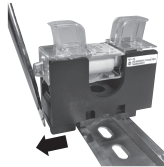
Insert the adapter in the direction of the arrow shown on the right until it sounds.



Rail attaching and detaching method



Attaching on the rail
Easy attaching by pushing into the rail.



Detaching from the rail
Just plug the screwdriver into the white claw and pull it in the direction of the arrow to detach it.



Rail mounting is tab not required
It can be fixed with only an adapter. It's structured to prevent left and right misalignment.

MOUNTING HOLE DIMENSIONS

F-10	PF-34, PF-35, SF-15	PF-34S, PF-35S, SF-15S	DF-34, DF-35	NF-61, NF-62	NF-61S, NF-62S