



CONNECTOR TERMINAL BLOCK

TCX-TYPE, TQX-TYPE, TCXS-TYPE, HC-TYPE, XCTF-TYPE

FEATURES

■ Useful for branching and crossover wiring.

At the tip of the tab terminals, two receptacles can be mounted to one pole. You can easily conduct branching and crossover wiring from the mounting side.

■ Erroneous insertion preventive structure

To prevent accidental connection with other circuits and deformation to the tip of the tab terminals, an erroneous insertion preventive structure is provided.

■ Easy wiring

Since the upper and lower terminal screws are arranged in staggered positions, you can easily connect a wire to each terminal.

■ Mounting orientation is selectable.

Two mounting holes are provided in the L-shaped projection parts, which are individually at 90° angles. You can select the connector terminal block mounting orientation according to the shape of the installation space. (Except for TCX)

SPECIFICATIONS (RATINGS, PERFORMANCE)

Specification	Type	TCX	TQX	TCXS	HC	XCTF
Type		TCX-19P TCX-19T	TQX-16P TQX-16T	TCXS-A-P TCXS-A-T	HC-23P HC-23T	XCTF-12P XCTF-12T
Rated insulation voltage (Ui)		600V		250V		600V
Rated current-carrying capacity (Ith)		10A				
Power-Frequency withstand voltage		2,500V AC / 1 min.		2,000V AC / 1 min.	2,500V AC / 1 min.	
Insulation resistance		1,000MΩ				
Rated impulse withstand voltage		±6kV / 3 times for each pole (1.2 / 50μs)	±4.8kV / 3 times for each pole (1.2 / 50μs)	±4.8kV / 3 times for each pole (1.2 / 50μs)	(Between live parts and mounting panel) ≥7kV (Between live parts) ≥4.5kV	±7kV / 3 times for each pole (1.2 / 50μs)
Shock resistance		50 G or more, along each axis	50 G or more, along each axis	30 G or more, along each axis		
Contact resistance		10 mΩ max. between end terminals (initial value)	5 mΩ max. between end terminals (initial value)	10 mΩ max. between end terminals (initial value)		
Short-time current		100A 1 sec.	120A 1 sec.	200A 1 sec.		
Ambient operating temperature		-25 to 40°C	-25 to 50°C	-10 to 60°C	-	
Relative humidity			45 to 85%	85% or less		
No. of poles		19 poles	16 poles	21 poles	23 poles	12 poles
Screw size		M4×8.5	M4×8.5	M4×8.5*	M4×8	M4×9
Applicable wire size	Plug	MAX 2mm ²	0.5 to 2.27mm ²	MAX 2mm ²		
	Terminal block	MAX 5.5mm ²	MAX 3.5mm ²	MAX 5.5mm ² *	MAX 5.5mm ²	
Applicable receptacle		MIC Mark II 172774-4 (manufactured by AMP) (Sold separately)				

* Terminal 1~19 will be M3.5×7.5 (Applicable cable : 2.2mm² max).

HOW TO ORDER (Plug and terminal block set)

TCX type connector

TCX-19TP

Basic type

No. of poles Terminal Plug block

TQX type connector

TQX-16TP

Basic type

No. of poles Terminal Plug block

TCXS type connector

TCXS-A-TP

Basic type

Configuration Terminal Plug block

HC type connector

HC-23PT

Basic type

No. of poles Plug Terminal block

XCTF type connector

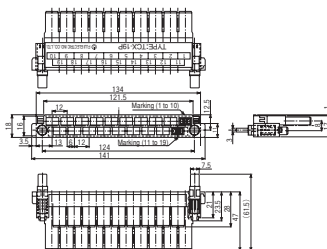
XCTF-12TP

Basic type

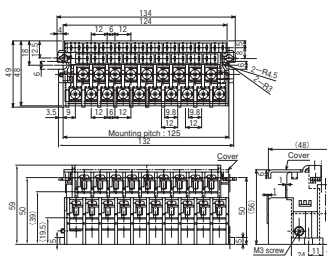
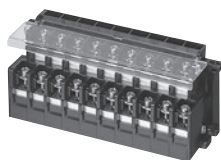
No. of poles Terminal Plug block

STANDARD PRODUCTS

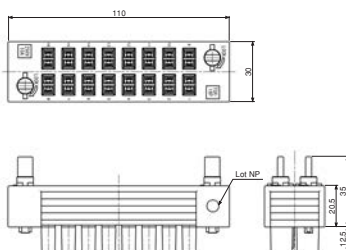
TCX-19P (Plug)



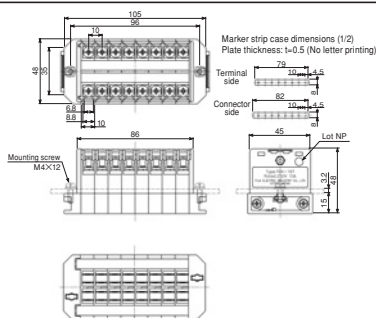
TCX-19T (Terminal block)



TQX-16P (Plug)



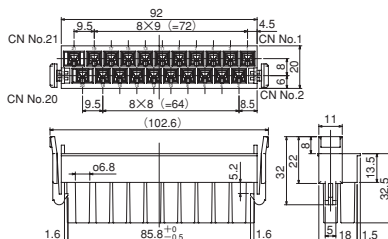
TQX-16T (Terminal block)



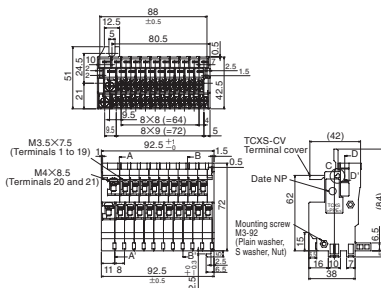


TCX-TYPE, TQX-TYPE, TCXS-TYPE, HC-TYPE, XCTF-TYPE

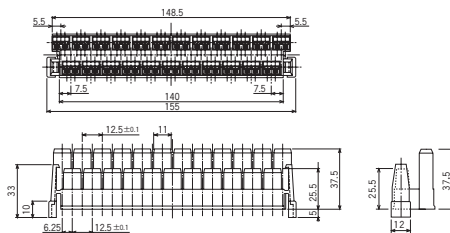
TCXS-A-P (Plug)



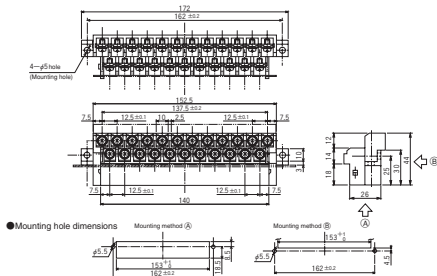
TCXS-A-T (Terminal block)



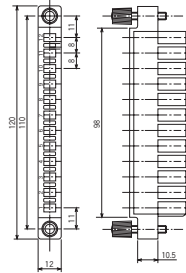
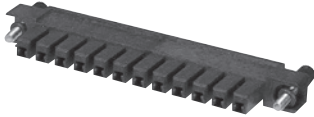
HC-23P (Plug)



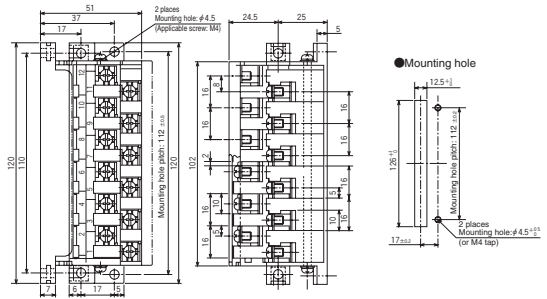
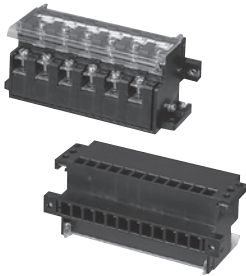
HC-23T (Terminal block)



XCTF-12P



XCTF-12T



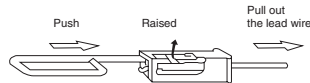
ACCESSORIES

Removal tool

●MIC-NQ

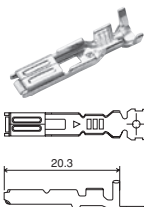
Used to remove receptacles from plugs.

* Please see page C66 for insertion and removal instruction.



Receptacle contactor (AMP Inc. (MIC) mark II)

* We are deal in below models.



Applicable wire size (mm ²)	Insulation coat diameter (mm)	Material and finish	Model of receptacle		Model of crimp tool
			Tape	Loose piece	
0.3 to 0.89	1.5 to 2.6	Brass / Tin plated	172775-1	172776-1	91592-1
		Brass / Partially gold plated	—	172776-2	
		Phosphor bronze / Tin plated	172775-4	—	
0.5 to 2.27	2.1 to 3.4	Brass / Tin plated	172773-1	* 172774-1	1804014-1
		Brass / Partially gold plated	172773-2	172774-2	
		Phosphor bronze / Tin plated	172773-4	* 172774-4	