



TCN- -TYPE

Reference Products

■FUTURES

- 1) Terminal block with screw terminals on the outside wire side and connectors on the inside panel wiring side.
The compact size was achieved without changing the user's wiring work.
 - 2) Two connector positions are lined up: backside connection (Penetrate type: A type) and surface connection (Parallel type: B type). Can be selected according to the panel structure, contributing to space saving in the panel.
 - 3) TCNQ type has a structure that prevents wires from falling out, preventing accidents due to pinching of crimp terminals.
- ※We will consider other productions upon request. Please contact our sales office for details.

Product Examples ① Penetrate type

■HOW TO ORDER

TCNX-3.5A - 44F1

①

②

③

① Basic type

② No. of poles

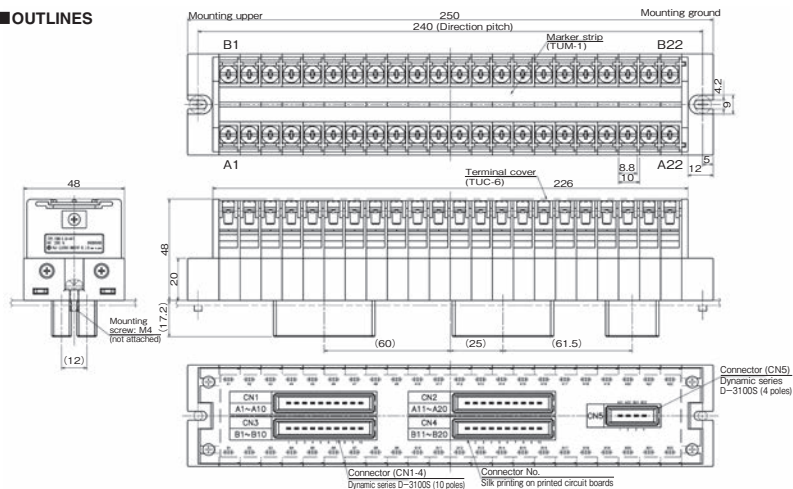
③ Circuit code

■SPECIFICATIONS (RATINGS, PERFORMANCE)

Rated insulation voltage (UI)	250V
Rated impulse withstand voltage	4kV
Rated current-carrying capacity (Ith)	1A
Rated cross-section	3.5mm ²
Rated connecting capacity	1.25 to 5.5mm ²
Crimp terminal	2mm ² : R type R2-4, 5.5mm ² : R type 5.5-S4
No. of poles	44
Screw size	M4×8.5
Pollution degree	3
Connector	Dynamic D-3100S
Insulation resistance	1,000MΩ or more
Power-Frequency withstand voltage	2,000V AC / 1 min. 1,500V AC / 1 min.
Rated impulse withstand voltage	±4000V / 3 times for each pole



■OUTLINES



Product Examples ② Parallel type

■ HOW TO ORDER

TCNQ-5.5B - 16 BXI-□ X1

①

②

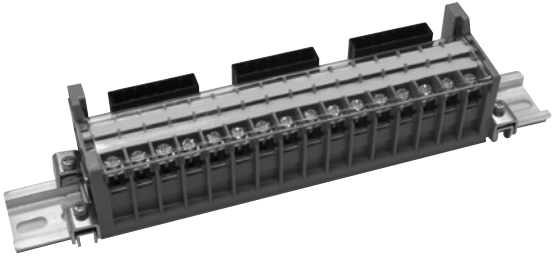
③

R: For right
L: For left

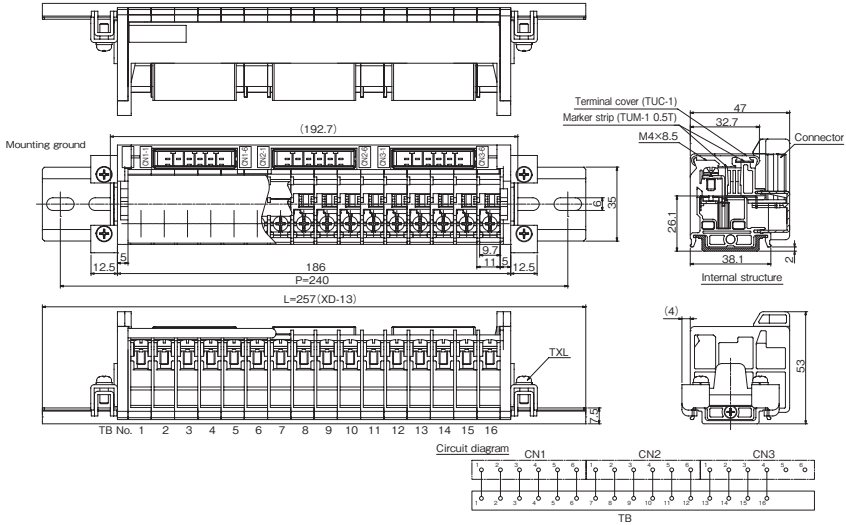
- ① Basic type
- ② No. of poles
- ③ Circuit code

■ SPECIFICATIONS (RATINGS, PERFORMANCE)

Rated insulation voltage (Ui)	600V AC / DC
Rated current-carrying capacity (Ith)	5A
Short-time current	20A / 0.5sec
Rated cross-section	5.5mm ²
Screw size	M4×8.5
Ambient operating temperature	−25 to 50°C
Storing temperature	−40 to 85°C
Relative humidity	45 to 85%
Pollution degree	1



■ OUTLINES



A SWITCH

B PILOT LAMP & INDICATOR

C CONNECTING DEVICES

D ELECTRONIC DEVICES