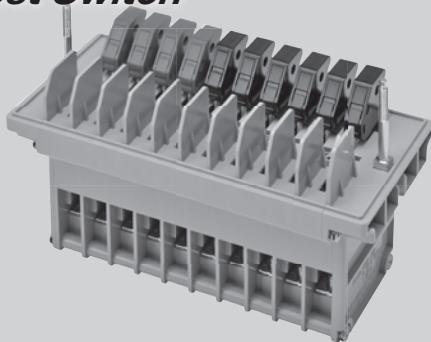




TEST SWITCH

STT TYPE

*High safety and contact reliability
lever operation type Test Switch*



FEATURES

Conformity with major standards

STT type conforms to IEC60497-3 and applies to UL414.

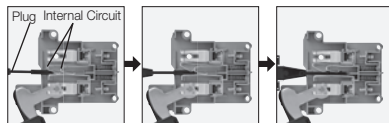
Wire dropping-off prevention

The rib on the terminal portion leads a ring tongue to proper position. This structure prevents improper connection of the screw and ring tongue.



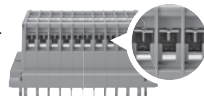
Open-Circuit prevention

Internal circuit of A and AS units (for Current Circuit) is double, which certainly prevents Open-Circuit during inserting a plug.



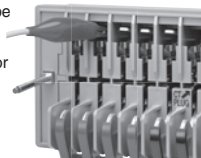
Efficient wiring work by Up-Screw Terminal

Up-Screw terminal makes wiring work more efficiently.



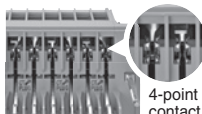
Easy voltage test by general clips

Voltage circuit testing can be easily conducted by general clips like an alligator clip as well as dedicated plugs.



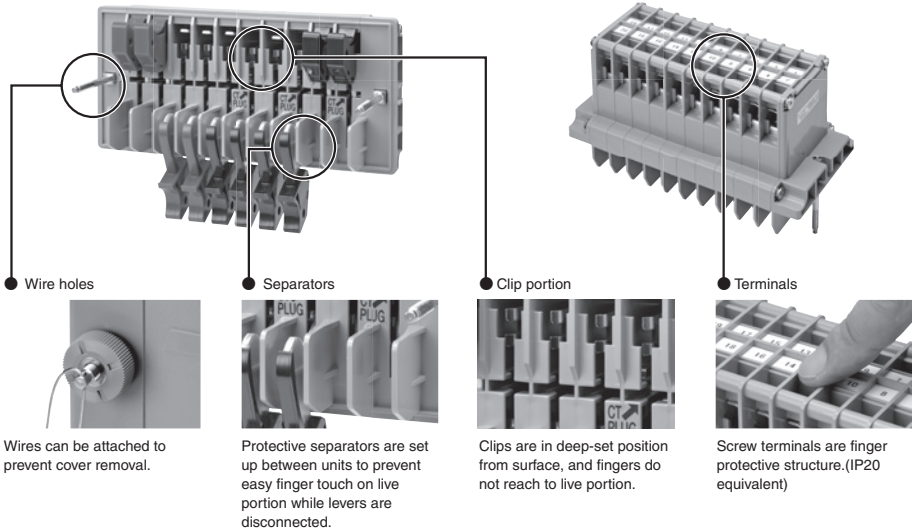
High contact reliability by 4-point contact

The multi point contact structure of clips enhances contact reliability.



Safety Structure

STT type is high safety structure.



SPECIFICATIONS (RATINGS, PERFORMANCE)

Standard: IEC60947-3, UL414 (2020)

| Specification | | Type | STT type |
|---|-----------------------|------|---|
| Rated insulation voltage (Ui) | | | 690V 250V (AS unit, close condition) |
| Rated impulse withstand voltage (Uimp) | | | ±6kV ±2.5kV (AS unit, close condition) |
| Conventional free air thermal current (Ith) | | | 30A |
| Rated making and breaking capacity | | | 250V AC (COS ϕ = 0.95) 0.15A AC, 250V DC (L/R = 1ms) 0.15A DC |
| Rated short-time withstand current (Icw) | | | 360A AC (COS ϕ = 1) - 1sec |
| Rated short-circuit making capacity (Icm) | | | AC 300V 100A (Peak) -50msec (COS ϕ = 0.7) |
| Rated operational voltage (Ue) | | | 250V |
| Rated operational current (Ie) | | | 0.1A |
| Utilization category | | | AC-21B, DC-21B |
| Rated connecting capacity | | | 0.75-5.5mm ² (AWG18-10) |
| Screw size | | | M4×10 |
| Clamping torque | | | 1.2N·m (Terminal), 0.8N·m (Plug) |
| Ambient air temperature | Performance guarantee | | -5 to 40°C (No freeze) |
| | Usable | | -25 to 70°C (No freeze) |
| Storing temperature | | | -40 to 85°C (No freeze) |
| Humidity | | | 45 to 85% |
| Altitude | | | 2,000 m or less |
| Pollution degree | | | Degree 3 |
| Ambient air temperature | | | -5 to 40°C (An average over a period of 24 hours does not exceed 35°C) |
| Conditions during transport and storage | | | -25 to 55°C (Up to 70°C for short periods not exceeding 24 hours (no condensation and freezing)) |
| Humidity | | | The relative humidity does not exceed 50% at a maximum temperature of 40°C (Higher relative humidities may be permitted at lower temperatures, e.g. 90% at 20°C) |



TEST SWITCH

STT TYPE

HOW TO ORDER

Test Switch

Pole No. — 1 2 3 4 5 6 7 8 9 10



Lever Side

STT - N - 10 -

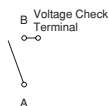
① Unit Type

② Lever Color

③ Cover Color

① Unit Type

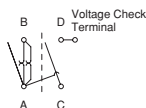
V For Voltage Circuit



A For Current Circuit



AS For Current Circuit (2 units)



C Blank Unit (No Internal Circuit)

② Lever Color

| Code | Color |
|------|------------------------|
| B | Black |
| N | Gray * |
| R | Red |
| O | Orange * |
| L | Light Blue |
| G | Green * |
| Y | Yellow |
| C | Brown * |
| W | White * |
| — | None ([C]Unit only) |

* Special model.

③ Cover Color

| Code | Color |
|---------|---------|
| (blank) | Gray |
| C | Clear * |

* Special model.

● Typical Unit Type Combination (Other combinations are available.)

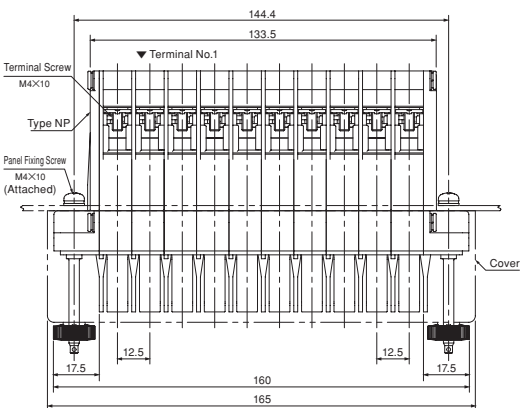
| Pole No. (Terminal No.) | 1 (1-2) | 2 (3-4) | 3 (5-6) | 4 (7-8) | 5 (9-10) | 6 (11-12) | 7 (13-14) | 8 (15-16) | 9 (17-18) | 10 (19-20) |
|----------------------------|------------|------------|------------|------------|-------------|--------------|--------------|--------------|--------------|---------------|
| VVVVVVVVVV | V | V | V | V | V | V | V | V | V | V |
| AAAAAAAAAA | A | A | A | A | A | A | A | A | A | A |
| CVVVVVVVVV | C | V | V | V | V | V | V | V | V | V |
| VVVVVVASV | V | V | V | V | V | V | V | AS | | V |
| VVVVVVASV | V | V | V | V | V | V | A | AS | | V |
| VVVVVASV | V | V | V | V | V | AS | | AS | | V |
| VVVASVVASV | V | V | V | AS | | V | V | AS | | V |
| VASVVVASV | V | AS | | V | V | V | V | AS | | V |
| ASASVVVVVV | AS | | AS | | V | V | V | V | V | V |
| VVVASASV | V | V | V | AS | | AS | | AS | | V |
| ASASASACC | AS | | AS | | AS | | AS | | C | C |

Test Plugs

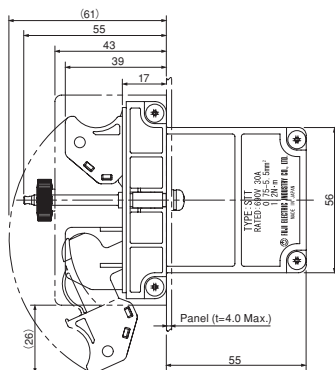
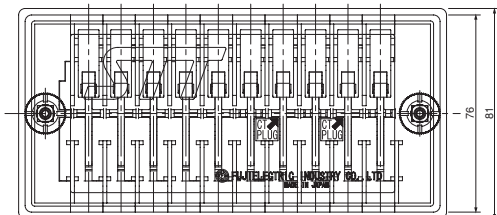
| | |
|--------|--|
| STP-V | For Voltage Circuit (Screw Terminal) |
| STP-A | For Current Circuit (Screw Terminal) |
| STPN-A | For Current Circuit (Clamp Terminal) * |

* Special model.

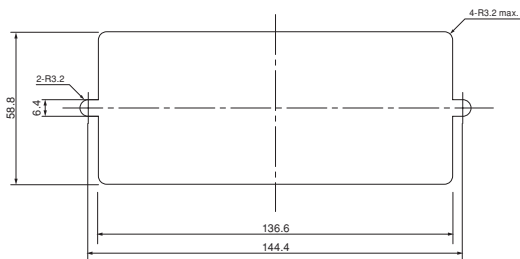
OUTLINE AND PANEL CUTOUT DIMENSIONS



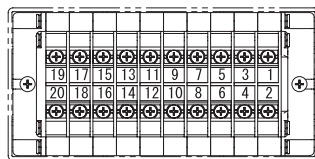
Dimensions : mm



Panel Cutout Dimension



Terminal Side View



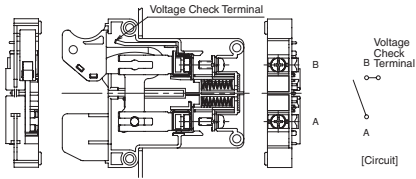


TEST SWITCH

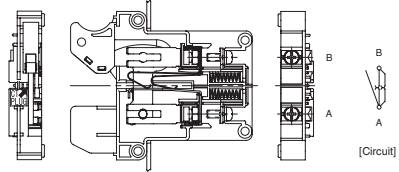
STT TYPE

UNIT OUTLINE AND CIRCUIT DIAGRAM

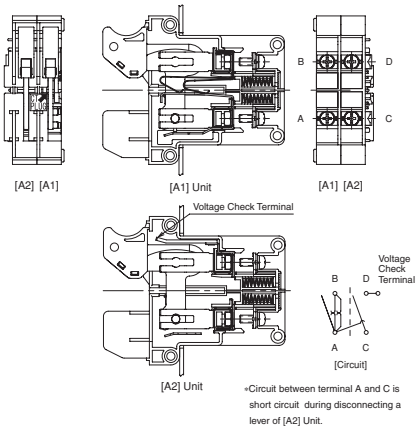
V Unit (For Voltage Circuit)



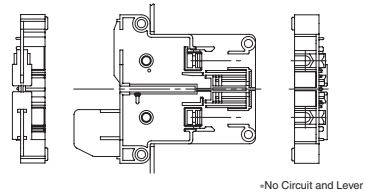
A Unit (For Current Circuit)



AS Unit (For Current Shorting Circuit)

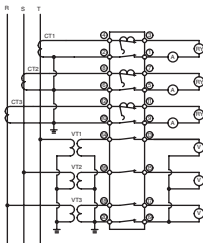


C Unit (Blank Unit)

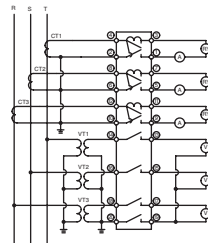


TYPICAL CIRCUIT EXAMPLE

Lever - Connected

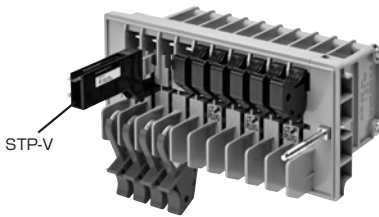


Lever - Disconnected

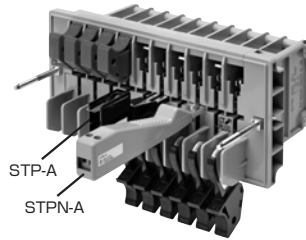


| Pole No. (Terminal No.) | 1 (1-2) | 2 (3-4) | 3 (5-6) | 4 (7-8) | 5 (9-10) | 6 (11-12) | 7 (13-14) | 8 (15-16) | 9 (17-18) | 10 (19-20) |
|----------------------------|------------|------------|------------|------------|-------------|--------------|--------------|--------------|--------------|---------------|
| ASASASVVVV | AS | | AS | | AS | | V | V | V | V |

PLUG INSERTION



Voltage Plug insertion to V (Voltage) unit



Current Plug insertion to A (Current) unit

ACCESSORIES

Test Plugs

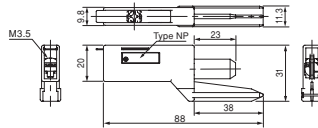
For Voltage Circuit (V Unit)

(Order unit: 10)

●STP-V



Screw Terminal



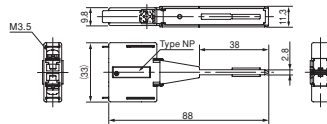
For Current Circuit (A-AS Unit)

(Order unit: 10)

●STP-A



Screw Terminal



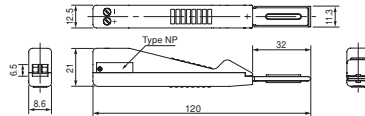
For Current Circuit (A-AS Unit)

(Order unit: 10)

●STPN-A



Clamp Terminal



[Reference] For voltage circuit

●STP10-V

* Please contact our sales office for details.



Covers

●STT-CV-N (Standard color)

* A cover is attached with STT body as a standard equipment.

* Clear cover is also available as a special product.

