



LINE SIDE SERIES (PRIMARY POWER DISCONNECT DEVICE)

KJ TYPE

Most standard series of power shutoff unit.

FEATURES

■Broad range of models

The available models are classified into type F (surface connection) and type B (bottom connection) according to their wiring methods. Each type is further classified into 2 different models depending on bus thickness and current. Thus, a total of 8 models is available to meet different purposes.

■Compact type

This compact power disconnect device has been designed to comply with downsized controller centers.

■Quality insulation material

High-performance engineering plastic (modified PPF resin; 100% virgin material) that has excellent insulation, heat resistance, and impact resistance is used as insulation material.

F / FL type

This is the surface connection type that is available in type F for bus thickness of 5 to 6 mm or type FL for 3 to 4 mm. Each type is further classified into 2 models for current of 125 and 250A. Thus, a total of 4 models is available for selection.

B / BL type

This is the bottom connection type that is available in type B for bus thickness of 5 to 6 mm or type BL for 3 to 4 mm. Each type is further classified into 2 models for current of 125 and 250A. Thus, a total of 4 models is available for selection.

SPECIFICATIONS (RATINGS, PERFORMANCE)

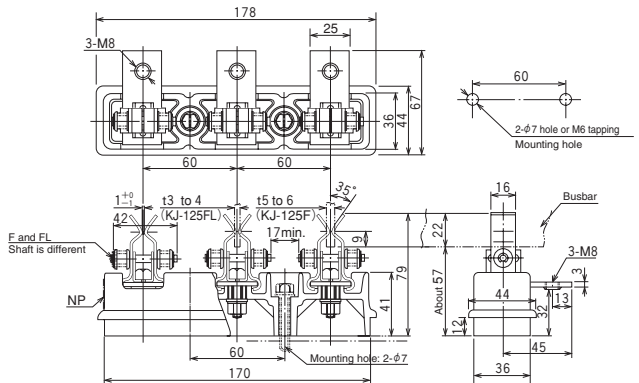
Type	KJ-125F	KJ-125FL	KJ-250F	KJ-250FL	KJ-125B	KJ-125BL	KJ-250B	KJ-250BL
Rated insulation voltage (UI)	600V				600V			
Rated current-carrying capacity (Ith)	125A		250A		125A		250A	
Busbar thickness	5 to 6mm	3 to 4mm	5 to 6mm	3 to 4mm	5 to 6mm	3 to 4mm	5 to 6mm	3 to 4mm
Product weight	415g		500g		535g		675g	

STANDARD PRODUCTS

KJ-125F (for 5 to 6mm)

KJ-125FL (for 3 to 4mm)

– Front connection type –

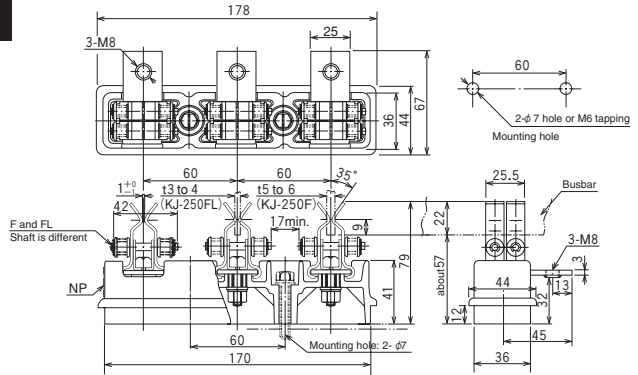


*Mounting bolts are not included. (Common for all models)

STANDARD PRODUCTS

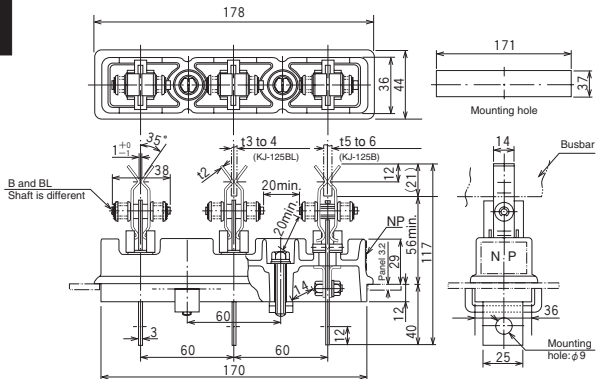
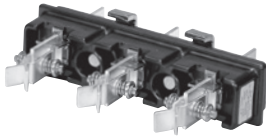
KJ-250F (for 5 to 6mm) KJ-250FL (for 3 to 4mm)

– Front connection type –



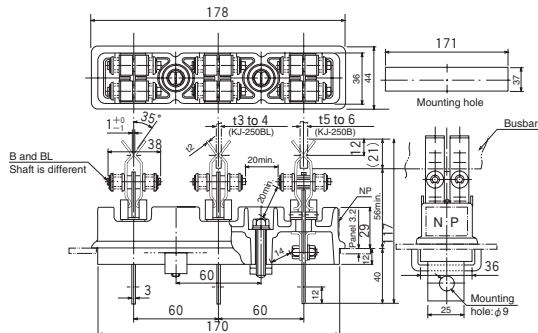
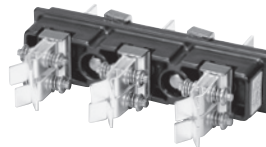
KJ-125B (for 5 to 6mm) KJ-125BL (for 3 to 4mm)

– Back connection type –



KJ-250B (for 5 to 6mm) KJ-250BL (for 3 to 4mm)

– Back connection type –



A SWITCH

B PILOT LAMP & INDICATOR

C CONNECTING DEVICES

D ELECTRONIC DEVICES