



LINE SIDE SERIES (PRIMARY POWER DISCONNECT DEVICE)

# HJ TYPE, HCJ TYPE, HKJ TYPE

This is a high insulation protection type of which clips are enclosed with housing.

## FEATURES

### ■ Protective structure for live part

The clip is provided with insulation protection, thereby it greatly improves safety and reliability.

### ■ Added 300A compatible product (HKJ type)

Newly added is the HKJ type, which is compatible with 300A, and a wide range of variations are now available.

#### B / BL type

The HJ series is a back connection type including the HCJ series that is an insulation protection type of the CJ series. It is classified into 2 types, type B for busbar thickness of 5 to 6 mm and type BL for 3 to 4 mm. Each type is available in 2 models for current of 125A and 250 A. Each model has a 4-pole version. Thus, a total of 12 models is available for selection.

## SPECIFICATIONS (RATINGS, PERFORMANCE)

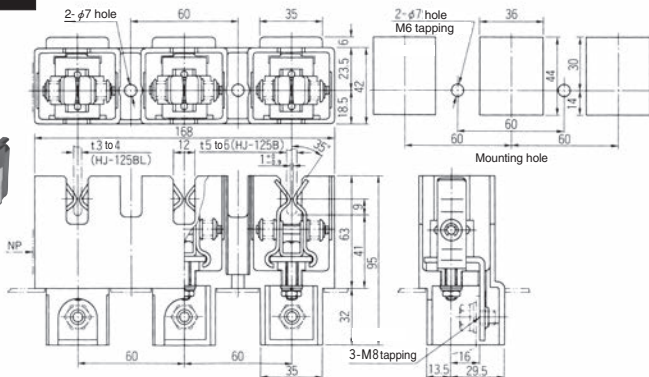
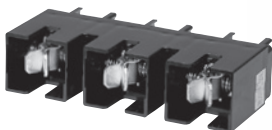
Type	HJ -125B	HJ -125BL	HJ -125B4	HJ -125BL4	HJ -250B	HJ -250BL	HJ -250B4	HJ -250BL4	HCJ -125B	HCJ -125BL	HCJ -125B4	HCJ -125BL4	HKJ -300B	HKJ -300BL
Rated insulation voltage (Ui)	600V				600V				600V				1,000V	
Rated current-carrying capacity (Ith)	125A				250A				125A				300A	
Busbar thickness	5 to 6mm	3 to 4mm	5 to 6mm	3 to 4mm	5 to 6mm	3 to 4mm	5 to 6mm	3 to 4mm	5 to 6mm	3 to 4mm	5 to 6mm	3 to 4mm	5 to 6mm	3 to 4mm
Product weight	520g		700g		610g		810g		465g		620g		670g	

## STANDARD PRODUCTS

**HJ-125B** (for 5 to 6mm)

**HJ-125BL** (for 3 to 4mm)

– Back connection type –





LINE SIDE SERIES (PRIMARY POWER DISCONNECT DEVICE)

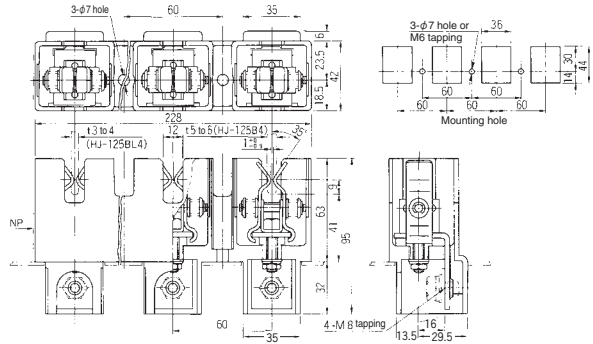
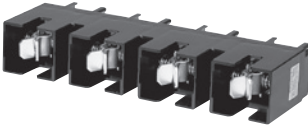
# HJ TYPE, HCJ TYPE, HKJ TYPE

## STANDARD PRODUCTS

**HJ-125B4** (for 5 to 6mm)  
**HJ-125BL4** (for 3 to 4mm)

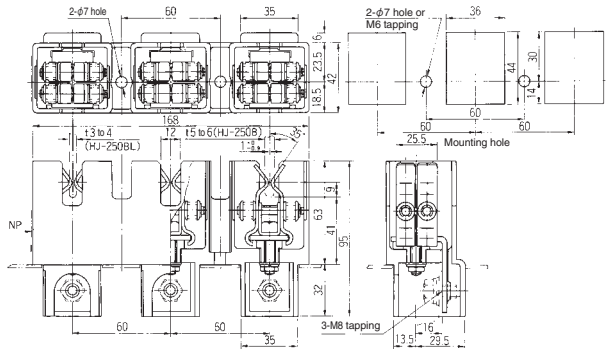
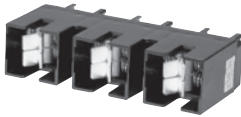
– Back connection type –

4-poles



**HJ-250B** (for 5 to 6mm)  
**HJ-250BL** (for 3 to 4mm)

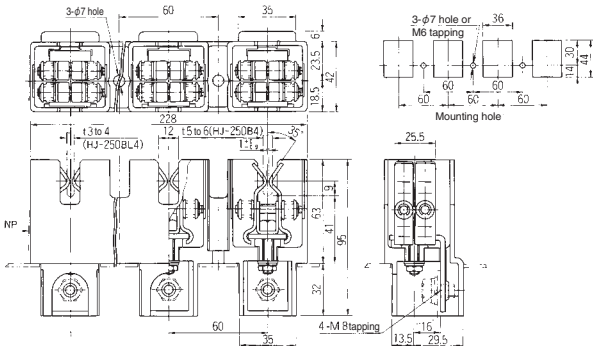
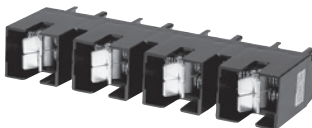
– Back connection type –



**HJ-250B4** (for 5 to 6mm)  
**HJ-250BL4** (for 3 to 4mm)

– Back connection type –

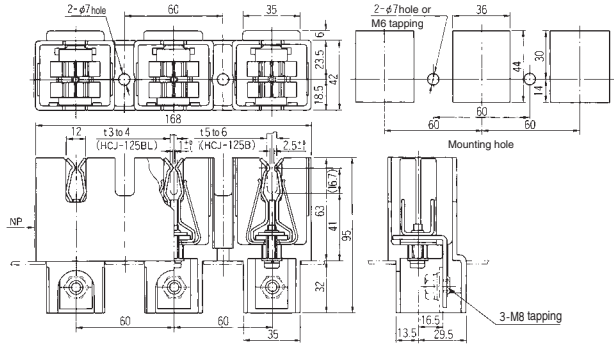
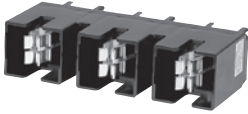
4-poles



# CONTROL CENTER PARTS

## HCJ-125B (for 5 to 6mm) HCJ-125BL (for 3 to 4mm)

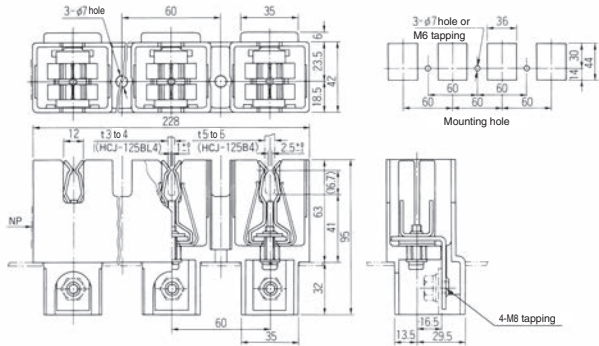
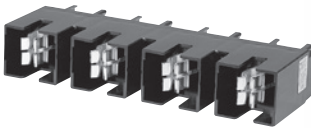
– Back connection type –



## HCJ-125B4 (for 5 to 6mm) HCJ-125BL4 (for 3 to 4mm)

– Back connection type –

4-poles



## HKJ-300B (for 5 to 6mm) HKJ-300BL (for 3 to 4mm)

– Back connection type –

