



LINE SIDE SERIES (PRIMARY POWER DISCONNECT DEVICE)

PDS TYPE

An electric wire is crimped to the contact.

This series offers compact models that meet all of wiring and space saving, and high reliability.

FEATURES

■Excellent contactor structure

The W-M grip of a new mechanism has greatly improved the short-circuit current characteristics.

The screwless design assures that the contact is completely protected at high reliability.

[The W-M grip is a new connecting method utilizing magnetic force of multiple contacts.]

SPECIFICATIONS (RATINGS, PERFORMANCE)

| Type | PDS-100A | PDS-100A1 | PDS-200A | PDS-200A1 | PDS-350A | PDS-350A1 |
|---------------------------------------|----------------------|-----------|-----------------|-----------|-----------------|-----------|
| Rated insulation voltage (Ui) | 1,000 AC / 1,200V DC | | | | | |
| Rated current-carrying capacity (Ith) | 100A | | 200A | | 350A | |
| Busbar thickness | 5 to 6mm | | | | | |
| Product weight | 310g | 135g | 360g | 150g | 600g | 245g |
| Applicable wire | 22mm² / phase | | 38mm²×2 / phase | | 60mm²×2 / phase | |

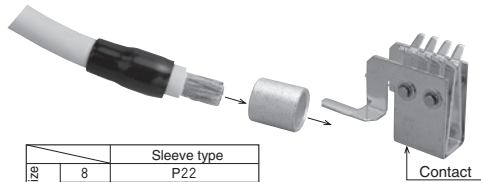
INSTRUCTION FOR CONNECTION

■Connection procedure

- (1) Strip the electric wire sheath to an appropriate extent and pass the insulation cap through.



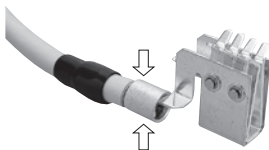
- (2) Select a sleeve from the following table and pass the contact and electric wire through the sleeve.



| Electric wire size (mm ²) | Sleeve type | |
|--|-------------|-----|
| | 8 | P22 |
| | 14 | P22 |
| | 22 | P38 |
| | 38 | P60 |
| | 60 | P70 |

* The sleeve type is of J.S.T. Mfg Co., Ltd.

- (3) Crimp the sleeve with the dedicated crimping tool (equivalent to YET-80W made by J.S.T. Mfg Co., Ltd.)



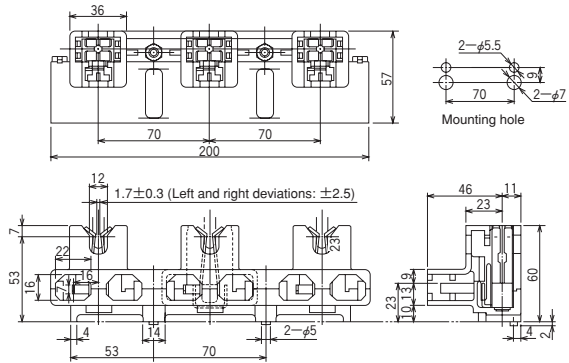
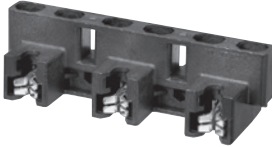
- (4) Cover the crimped sleeve with the insulation cap.



STANDARD PRODUCTS

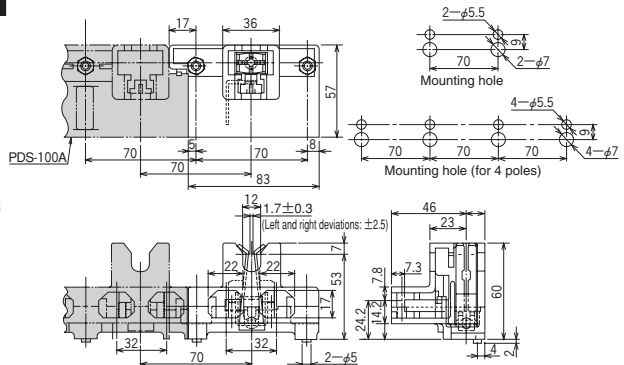
PDS-100A

– Crimp style –



PDS-100A1

– Crimp style –

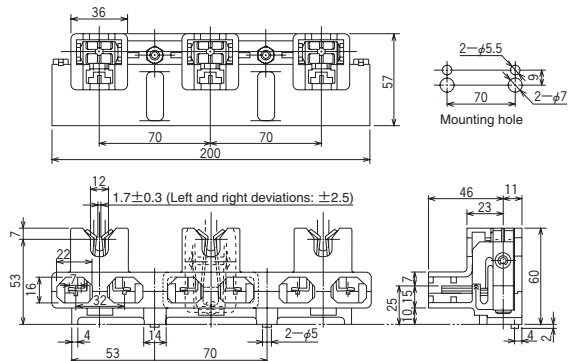


* This type of the PDA-100A is used for 4 poles.

(Used only as set of PDS-100A)

PDS-200A

– Crimp style –





LINE SIDE SERIES (PRIMARY POWER DISCONNECT DEVICE)

PDS TYPE

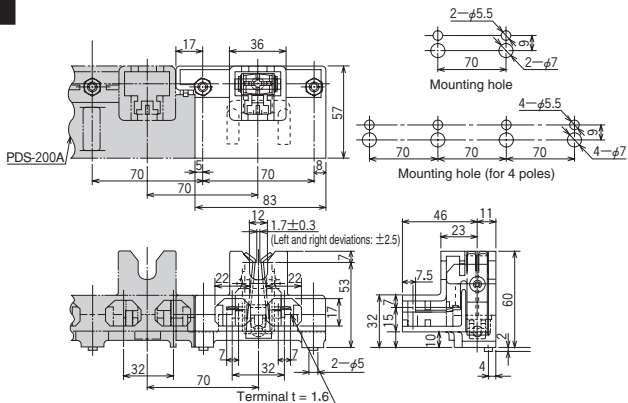
STANDARD PRODUCTS

PDS-200A1

– Crimp style –

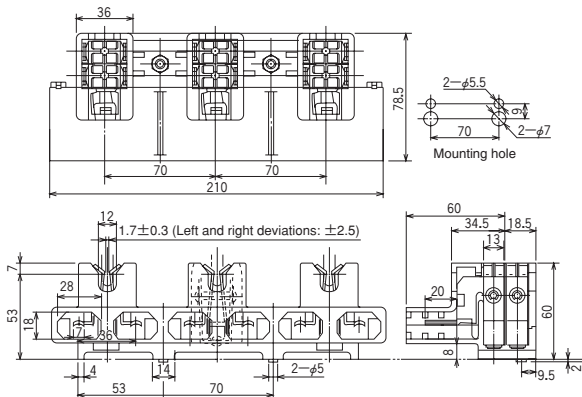
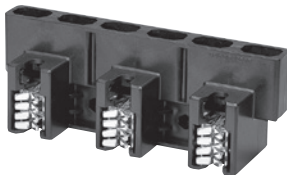


* This type of the PDS-200A is used for 4 poles.
(Used only as set of PDS-200A)



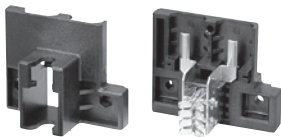
PDS-350A

– Crimp style –



PDS-350A1

– Crimp style –



* This type of the PDS-350A is used for 4 poles.
(Used only as set of PDS-350A)

