



The MEJA series have been designed taking account of the insertion and connection directions for disconnecting portion.

The MEJA series improves the efficiency in the unit and contributes to increased compactness.

■ Efficient design

The MEJA series is designed as being connected to the lateral side of the unit.

It comply with the request for downsizing control center.

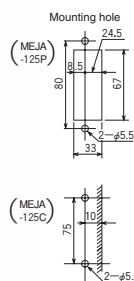
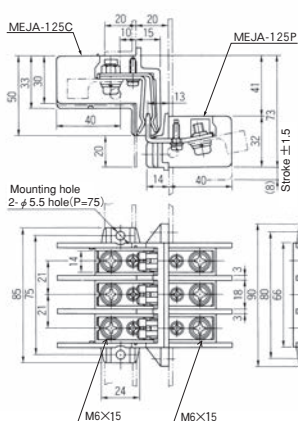
The connection positions are indicated taking account of the work efficiency. This allows wiring to be carried out easily.

SPECIFICATIONS (RATINGS, PERFORMANCE)

| Type | MEJA-125P (Plug) | MEJA-125C (Clip) | MEJA-125P4 (Plug) | MEJA-125C4 (Clip) | MEJA-225P (Plug) | MEJA-225C (Clip) | MEJA-225P4 (Plug) | MEJA-225C4 (Clip) |
|---------------------------------------|---------------------|---------------------|----------------------|----------------------|---------------------|---------------------|----------------------|----------------------|
| Rated insulation voltage (UI) | 600V | | | | 600V | | | |
| Rated current-carrying capacity (Ith) | 125A | | | | 225A | | | |
| Product Weight | 100g | 160g | 130g | 210g | 215g | 300g | 280g | 415g |

STANDARD PRODUCTS

MEJA-125C





LOAD SIDE SERIES (PRIMARY LOAD DISCONNECT DEVICE)

MEJA TYPE

STANDARD PRODUCTS

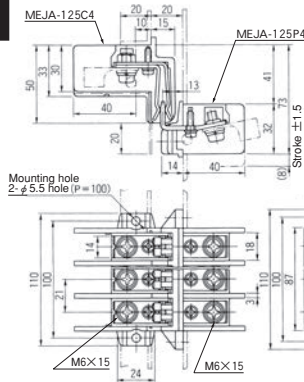
MEJA-125P4 (Plug for 4 poles)
MEJA-125C4 (Clip for 4 poles)



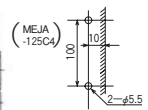
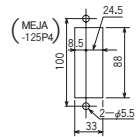
MEJA-125C4



MEJA-125P4



Mounting hole



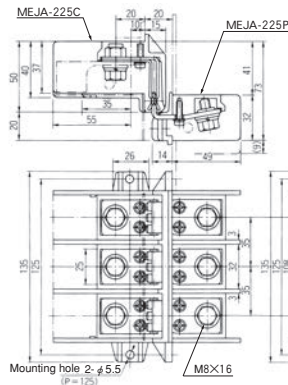
MEJA-225P (Plug for 4 poles)
MEJA-225C (Clip for 4 poles)



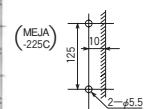
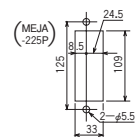
MEJA-225C



MEJA-225P



Mounting hole



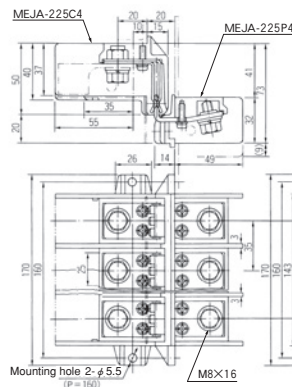
MEJA-225P4 (Plug for 4 poles)
MEJA-225C4 (Clip for 4 poles)



MEJA-225C4



MEJA-225P4



Mounting hole

