



LOAD SIDE SERIES (PRIMARY LOAD DISCONNECT DEVICE)

# SJ TYPE

## FEATURES

### ■ Compact design

Significantly smaller than conventional load disconnect device, contributing to space saving in control centers.

### ■ Expansion with short bar

By connecting and wiring the terminals with dedicated short bar (sold separately), 200A and 300A can be used.

### ■ Two kinds of protective covers

In addition to the conventional hinge type cover, a new slide type cover has been added to the lineup. You can choose the type of cover that best suits your application and space requirements.

## SPECIFICATIONS (RATINGS, PERFORMANCE)

Type	SJ-100P (Plug)	SJ-100C (Clip)
Rated insulation voltage (UI)	600V	
Rated current-carrying capacity (Ith)	100A	
Product weight	105g	150g

## STANDARD PRODUCTS

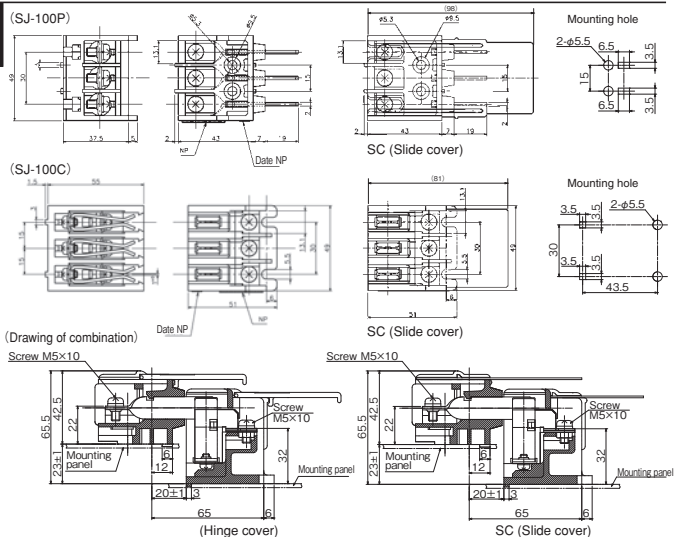
### SJ-100P (Plug) SJ-100C (Clip)



SJ-100P



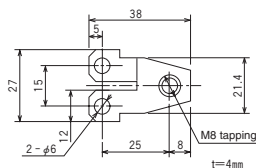
SJ-100C



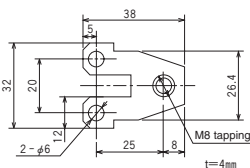
## ACCESSORIES

This is an interpolator jumper as use of 100A or more.  
Please contact us for how to use.

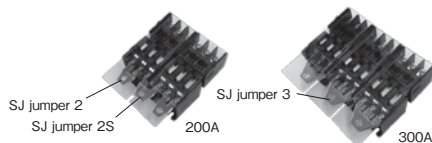
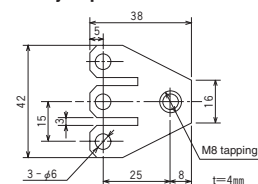
### ● SJ jumper 2



### ● SJ jumper 2S



### ● SJ jumper 3



SJ jumper 2  
SJ jumper 2S  
200A

SJ jumper 3  
300A