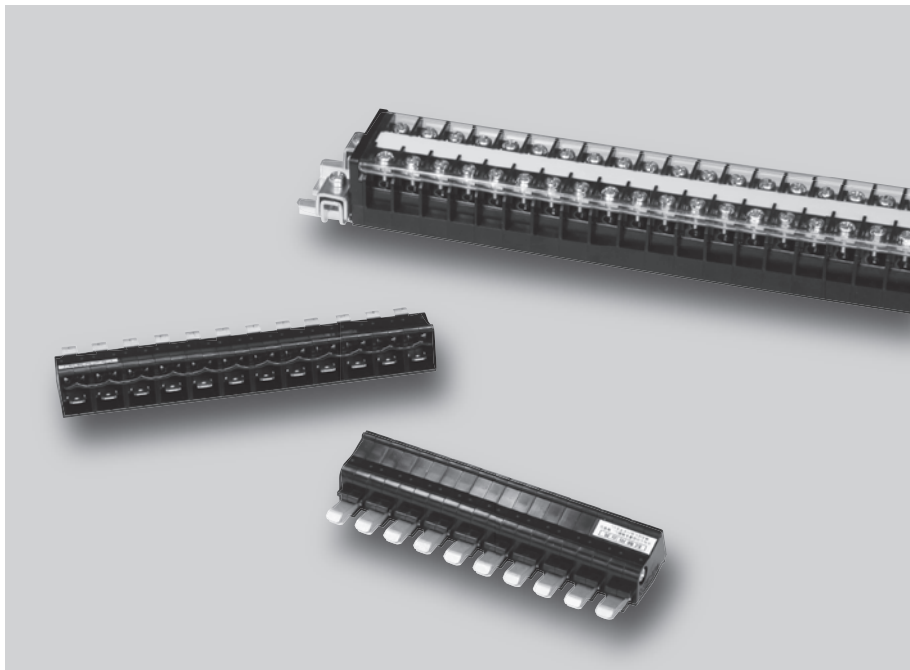




TESTING CONNECTOR

# CHX TYPE



## FEATURES

### Testing time reduction

Time of withstand voltage test and sequence check can be shortened by easy connection of CHX connector. In addition, jumper (Accessory) can connect circuits between adjoining at once.

### Applicable to general screw-up type terminal block

CHX type is applicable to 5.5 mm<sup>2</sup> wire size (11 mm pitch) terminal block.

## SPECIFICATIONS (RATINGS, PERFORMANCE, STANDARD OPERATING CONDITION)

Specification \ Type	CHX-3.5	CHX-5.5
Rated insulation voltage (Ui)	250V	
Rated current-carrying capacity (Ith)	1A	4A
Applicable wire size	AWG22-14 (0.5 to 2mm <sup>2</sup> )	
Applicable receptacles	#205 series 170182-2 (AWG22-18), 170180-2 (AWG18-14)	
Applicable terminal block type	TJ-3.5, TCNX-3.5, TCNQ-3.5	TX-5.5, TX-5.5S, TXW-5.5, TQ-5.5, TQW-5.5, TJ-5.5
Insulation resistance	20MΩ or more	
Power-Frequency withstand voltage	2,500V AC / 1 min.	
Ambient operating temperature	-25 to 50°C	
Storing temperature	-40 to 85°C	
Relative humidity	45 to 85%	
Altitude	2,000 m or less	

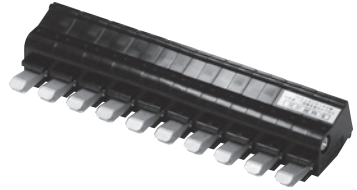
## How to order of terminal blocks

[Testing connector]

**CHX - 5.5 × 10**

Type name
CHX-3.5
CHX-5.5

code	No. of poles	
	CHX-3.5	CHX-5.5
8	8 pole	-
10	10 pole	10 pole
12	12 pole	12 pole
13	-	13 pole



[Jumper]

**CHX - 5.5SB × 10 C - B**

Type name
CHX-3.5SB
CHX-5.5SB

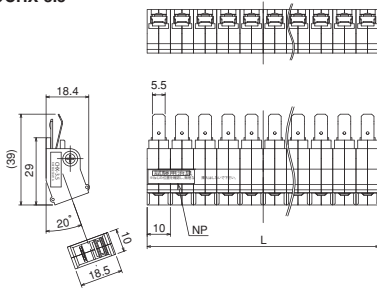
With insulation coat / black color

code	No. of poles	
	CHX-3.5SB	CHX-5.5SB
8	8 pole	-
10	10 pole	10 pole
12	12 pole	12 pole
13	-	-

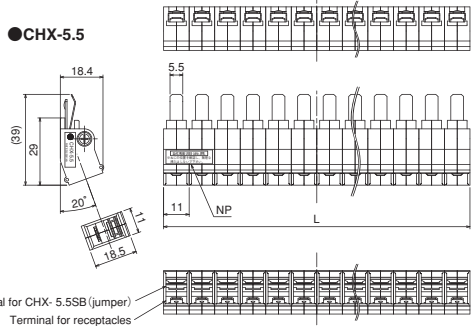


## OUTLINES

### ●CHX-3.5



### ●CHX-5.5



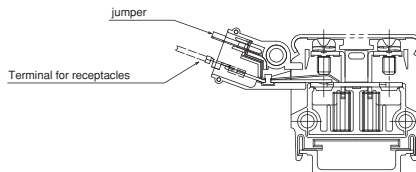
No. of poles and length

No. of poles	8	10	12
L	80	100	120

No. of poles and length

No. of poles	8	10	12	13
L	88	110	132	143

## CONNECTION EXAMPLES



Jumper can connect circuits between adjoining at once.