



PLUG-IN RELAY

PKH TYPE

Keep relay for 110V DC



FEATURES

Realization of miniaturization

Compact design contributes to space saving in the equipment.

Conformed to B-402 standards

PKH has high noise withstand, voltage fluctuation and insulation performance.

Reduction of mounting man-hours

Plug-in type eliminates the need to change wiring when replacing.

Equipped with function to prevent relay keep being charged

PKH has function to prevent relay keep being charged. Includes LED to indicate operating status.

SPECIFICATIONS (RATINGS, PERFORMANCE)

Specification	Type	PKH-KP1CM-DC110V	PKH-KP2CM-DC110V
Control power voltage		100 / 110V DC	
Fluctuation range of control power voltage		80 to 143V DC (DC143V is temporarily allowed)	
Operation performance	SET voltage	80% or less of rated voltage	
	RESET voltage		
	Set time	5ms (DCF) (SET • RESET)	
Min. input time		10ms	
Internal relay		G6AK-274P-ST-US DC48V (Manufactured by OMRON Co., Ltd)	
Output contact	Number of contacts	1c	2c
	Max. contact current-carrying capacity	1A DC	
	Making and breaking capacity	30V DC / 1A (Resistive load), 110V DC / 0.2A (Inductive load)	
Insulated resistance		(500V DC mega) Between all circuit and ground	
		5M Ω (500V DC mega)	
		Between coil and output contact, Between Output contact (only 2C contact specification), Between contact circuit terminals (inter-polar)	
Power-frequency withstand voltage		2,000V AC / 1min.	
		Between all circuit and ground (Includes output contact in electrical circuit) Between output contact (only 2C contact specification)	
		1,000V AC / 1min.	
Impulse withstand voltage (Uimp)		Between coil and output contact, Between contact circuit terminals (inter-polar)	
		$\pm 4.5kV$ (1.2 $\times 50\mu s$) each 3 time	
Ambient operating temperature		Between all circuit and ground (Includes output contact in electrical circuit)	
Ambient operating humidity		0 to 40°C (no freeze / no condensation)	
Operational indication color		30 to 80%	
Holder (accessory)		Red	
Socket (optional)		PKT holder 14 (Manufactured by Fuji electric industry Co., Ltd)	
		PYF14T / PYFZ-14 (Manufactured by OMRON Co., Ltd)	

*Do not input set and reset simultaneously as it may cause excessive heat generation and unstable operation.

*An inrush current of approximately 1A (5ms or less) flows at set and reset inputs.

HOW TO ORDER

PKH - KP 2C M - DC110V

① ② ③ ④ ⑤

No.	Item	Code	Detail
①	Basic type	PKH	
②	Circuit code	KP	Keep relay
③	Output contact	1C	1c contact
		2C	2c contact
④	Contact specification	M	Minute electric current contact
⑤	Control power voltage	DC110V	DC100/110V



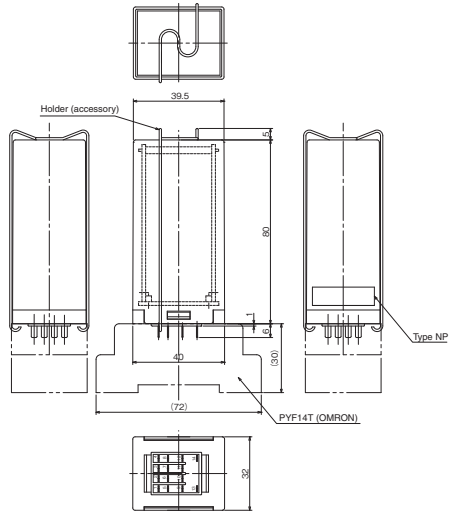
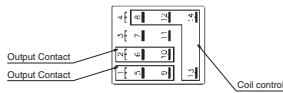
PLUG-IN RELAY

PKH TYPE

Outline

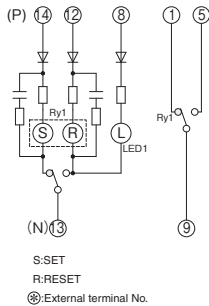


[Terminal arrangement]
BOTTOM VIEW



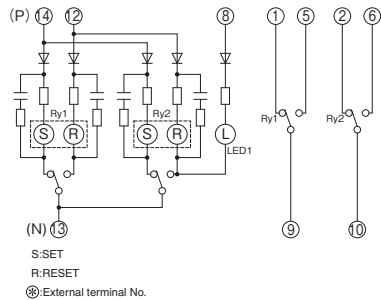
Circuit diagram

[1c contact specification]



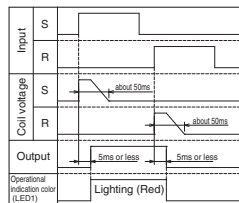
*An inrush current of approximately 1A (5ms or less) flows at set and reset inputs.

[2c contact specification]



*An inrush current of approximately 1A (5ms or less) flows in each of the relays at set and reset inputs.

Operation chart



* For 2C contact, both Ry 1 and 2 have the above operation chart.